



徐工徐工 助您成功  
XCMG FOR YOUR SUCCESS

# XC918-EV

WHEEL LOADER  
轮式装载机



地址：中国徐州经济技术开发区工业一区  
邮编：221004 客服电话：400-110-9999  
Add: Xuzhou Economic Development Zone, Jiangsu, China  
Postal: 221004 Hotline: 400-110-9999



▼ 徐工集团XC918-EV轮式装载机，小型装载机绿色环保引领者，机器-人-环境可持续发展的开拓者，以“电”代“油”，零排放无污染，产品更安静、更干净、更舒适、更便利、更高效、更经济、更灵活和更安全，可配置货叉、夹钳等多种机具，满足畜牧业、农业、林业、城市建设等领域成套化需求。

The XCMG XC918-EV wheel loader, as the leading mini loader with environmental protection and the pioneer of sustainable development for machine-human-environment, features zero-emission with quiet, clean, comfortable, accessible, efficient, economical, flexible, and safe operation as well as the optional tools i.e. the pallet forks and grippers, etc. for multiple industrial applications including animal husbandry, agriculture, forestry and urban construction, etc.



### 性能特长 Performance Highlights

- ▼ 续航能力：重载连续作业 $\geq 3.5h$ ，中载连续作业 $\geq 5.5h$ ，轻载连续作业 $\geq 8h$ ；  
Long battery life: No less than 3.5h for continuous heavy-loading operation, no less than 5.5h for continuous medium-loading operation, and no less than 8h for continuous light-loading operation.
- ▼ 转向角度 $40^\circ$ ，转弯半径 $\leq 3.7m$ ，轻松应对各种复杂地形工况；  
Steering angle of  $40^\circ$  and a turning radius of no more than 3.7m for multiple conditions with complicated terrains.
- ▼ 提升力 $\geq 26kN$ ，掘起力 $62kN$ ，满足重载工况需求；  
Elevating power of no less than 26kN and excavating power of 62kN for all heavy-loading conditions.
- ▼ 更安静：专业化电机系统和高效的液压系统完美匹配，室内噪音 $\leq 75dB(A)$ ，辐射噪音 $\leq 100dB(A)$ ；  
Quietness: Perfect matching of specialized motor and efficient hydraulic system, featuring internal noise of no more than 75dB(A) and radiation noise of no more than 100dB(A).
- ▼ 更干净：纯电动，环保零排放，无需更换机油三滤等；  
Cleanliness: Pure electric, zero-emission, the engine oil filters are not required to replace, etc.
- ▼ 更舒适：整体增压全视野驾驶室，F-N-R先导操纵，8寸液晶显示屏，整机运用Jack模拟技术，给人以豪华驾乘体验；  
Comfort: Integrated and supercharged driving cab with panoramic vision, F-N-R pilot control, 8-inch LCD screen, and Jack simulation technology to offer a luxurious experience.
- ▼ 更便利：前翻式机罩，侧翻式驾驶室，一站式检修；  
Convenience: Front-flipping engine hood and tilting driving cab with one-stop maintenance.
- ▼ 更高效：转速转矩复合控制，先导智能变速，怠速停机，自适应工况；  
High-efficiency: Compound control of speed and torque, intelligent pilot speed change, idling stop, and self-adaptive to working conditions.
- ▼ 更经济：相比传统产品，节能 $\geq 70\%$ ，5年综合使用成本降低55%；  
Economy: Compared with traditional products, the energy-saving is no less than 70%, and the comprehensive cost of 5 years is reduced by 55%.
- ▼ 更灵活： $10^\circ$ 中心摆动、 $\pm 40^\circ$ 铰接转向，短尾设计；  
Flexibility: Central oscillation of  $10^\circ$  and articulated steering of  $\pm 40^\circ$  with short-tail design.
- ▼ 更安全：ROPS&FOPS驾驶室，高压断路保护检修更安全。  
Safety: ROPS&FOPS driving cab with high-voltage open-circuit protection for easy maintenance.

## 技术先进性 Advanced Technology

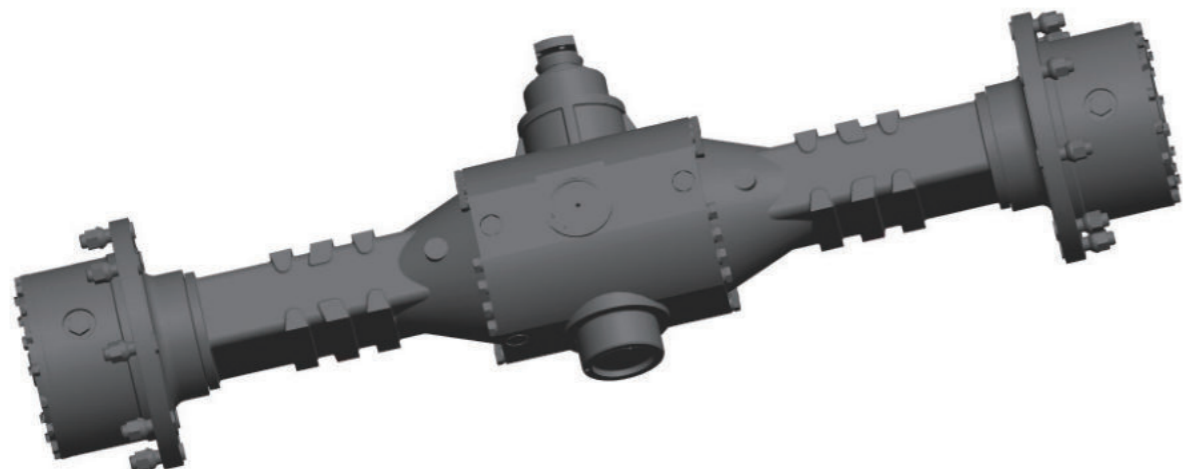
- ▼ 高效、高可靠永磁同步电机，转速、转矩智能复合控制，怠速停机，自适应工况，确保铲运作业及行走工作在最低能耗区，辅助能量回收控制系统，进一步降低能耗；高能量密度磷酸铁锂动力电池，自适应环境热管理系统，确保电池始终在最佳工作区，进一步延长续航能力。

Multiple technologies including efficient and reliable permanent magnet synchronous motor, intelligent compound control of speed and torque, idling stop, self-adaptive to working conditions will ensure low energy consumption during operation and assist the energy recovery and control system to minimize the energy consumption. The high-energy intensity LFP battery with a self-adaptive thermal management system will ensure proper operation and improve the battery life.

## 产品可靠性 Reliability

- ▼ 整机结构件采用CAE仿真分析，安全系数高。前、后车架等采用整体框架重载结构，承受各种工况下的阻力和冲击载荷；磷酸铁锂动力电池8年以上寿命，循环寿命4000次以上；加强型驱动桥，动载系数高，更适应重载工况。

The machine is using the CAE simulation analysis with a high safety factor. The front and rear frames are made of integrated structures for heavy-load with resistance and impact load under multiple working conditions. The LFP battery features a service life of more than 8 years and a cycle life of more than 4000 times. The enhanced drive axle features a high dynamic factor that applies to the heavy-loading conditions.



## 产品方便性 Accessibility

- ▼ 大开启角度前翻式机罩，侧翻式驾驶室，一站式检修。  
The front-flipping hood with a large opening angle and tilting driving cab will ensure the one-stop maintenance.



## 产品舒适性 Comfort

- ▼ 全景增压驾驶室，溜背机罩设计，储物盒、手机存放盒等触手可得，F-N-R先导操纵，8寸液晶显示屏，座椅、转向柱等自适应不同百分位人体需求可调节，整机运用Jack模拟技术，最佳的通道设计，给人以豪华驾乘体验。

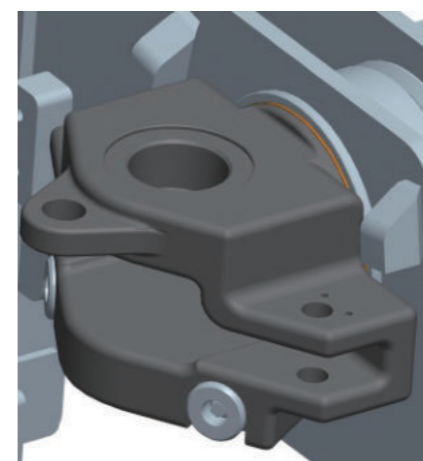
The supercharged driving cab with panoramic vision is designed with a fastback hood and configured with multiple devices to offer a luxurious experience, including the accessible storage box and mobile phone box, F-N-R pilot control, 8-inch LCD screen, adjustable ergonomic seats and steering columns, Jack simulation technology, and the optimal aisle design.



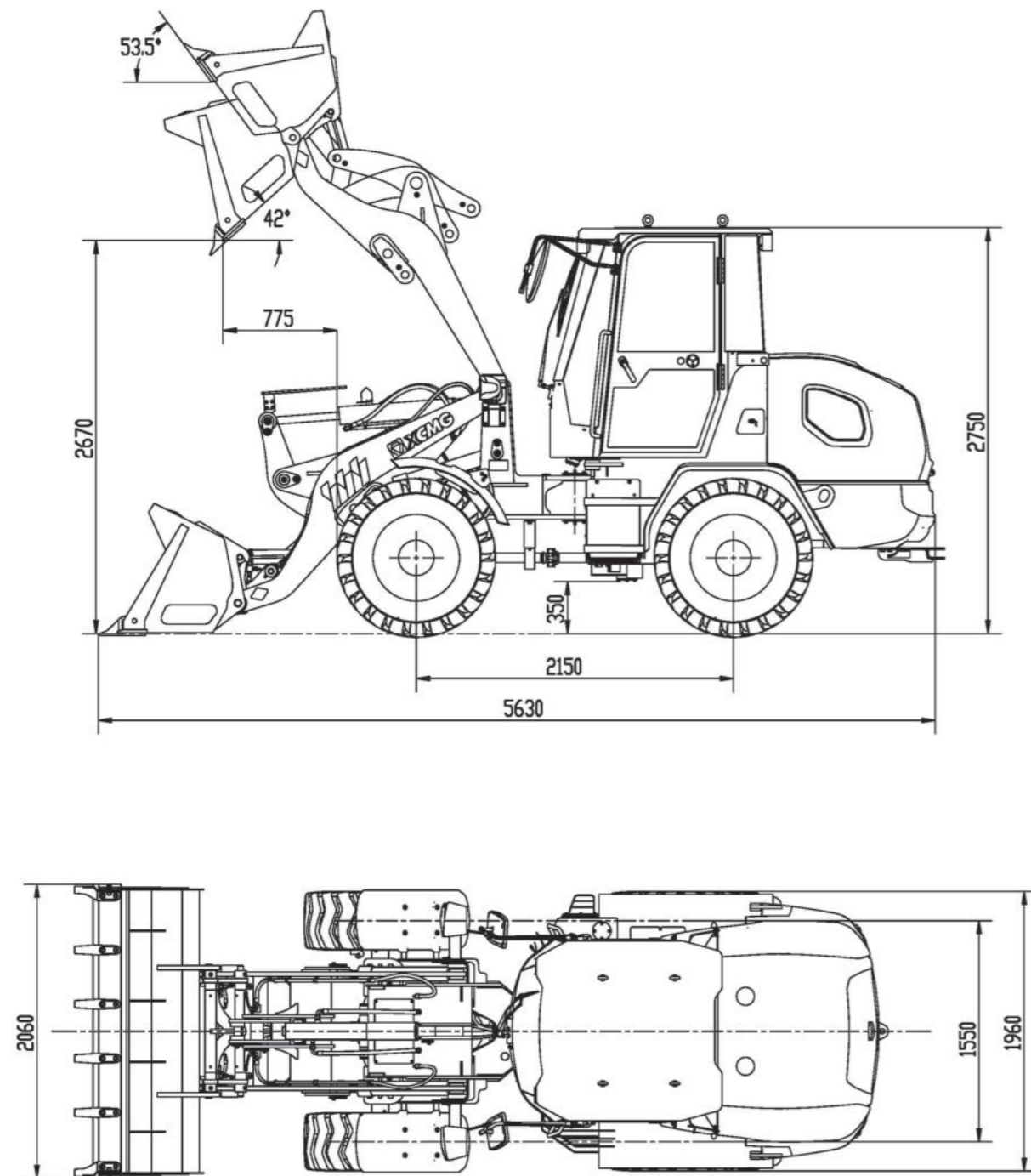
## 产品灵活性 Flexibility

- ▼ 中心铰接体结构，满足10°中心摆动、±40°铰接转向，短尾设计，转弯半径更小。三联液压快换结构，一键式快换，满足一机多用。

The machine is configured with a central articulated structure with 10° central oscillation, ±40° articulated steering, short-tail design, and limited turning radius. The fast-changing triple hydraulic system features the one-key change for multi-functionality.



外形尺寸 Overall dimensions



主要参数 Main specifications

项目 Description	参数 Specifications	单位 Unit
额定载荷 Rated load	1800	kg
斗容大小 Bucket capacity	1.0	m <sup>3</sup>
整机工作质量 Operating mass	6500	kg
电机额定功率 Rated power of the motor	64	kW
卸载高度 Dumping height	2670	mm
卸载距离 Dumping range	775	mm
最小离地间隙 Minimum ground clearance	350	mm
卸载角度 Dumping angle	42	°
轴距 Wheelbase	2150	mm
轮距 Wheel tread	1550	mm
最大掘起力 Maximum breakout force	62	kN
三项和时间 Total cycle time	9.7	s
最小转弯半径(轮胎中心) Minimum turning radius (tire center)	3.7	m
轮胎规格 Tire specification	16/70-20	-
转向角度 Steering angle	±40	°
摆动角度 Oscillation angle	10	°
整机外形尺寸(长宽高) Overall machine dimensions (L×W×H)	5630×2060×2750	mm
行驶速度 Traveling speed	0-20	km/h
电池电压 Battery voltage	579.6	V
电池容量 Battery capacity	173	Ah
充电时间 Charging time	1 (根据充电桩功率而定) (depending on the power of the charging pile) h	