

43 m Truck-mounted Concrete Boom Pump



ขาตั้งทรง ARC เอกสิทธิ์เฉพาะ Schwing stetter
เพิ่มการค้ำยัน 50% ใช้พื้นที่ลดลง 15%

ประหยัดน้ำมันกว่า 20%
หรือเพียง 0.36 L/m³



น้ำหนักเบาสุดในอุตสาหกรรมเพียง
28670 kg

HB43V



OCR





HB43V

Technical data for travel

Overall dimensions (LxWxH)	11260x2540x360 mm
Fuel type	Diesel oil
Displacement/Rated power	10.52/280 L/kW
Steering type	Steering Wheel
Axles amount	4
Wheel base	2200+2980+1350 mm
Tire specification	11R22.5-16PR
Wheel track(front wheel/rear wheel)	2055/1860 mm
Tire amount(excluding spare tire)	12
Total vehicle weight	28670 Kg
Seating capacity of the cab	2 Person
Approach angle/departure angle	15° / 10°
Max. speed	125 Km/h

Chassis

Model	GY2PS1A-XHT
Manufacturer	HINO

Engine

Model	P11C-VU
Rated power	280 kw/380 Hp

Valve

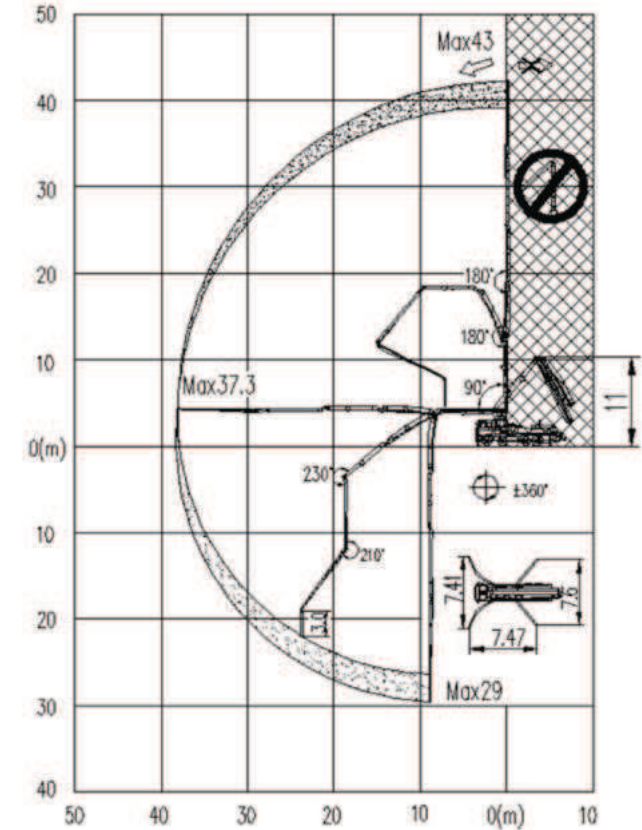
Change valve	Rock valve
Stroke per minute (High/Low Pressure)	18~19/27~28 t/min

Technical data for pumping operation

Theoretical throughput (High/Low Pressure)	90/130 m ³ /h
Concrete pumping pressure (High/Low Pressure)	13/8 MPa
Max. diameter of concrete aggregate	40 mm
Delivery cylinder diameter & stroke length	φ236x1600 mm
Feeding height	1540 mm
Bucket capacity	0.6 m ³
Concrete pumping slump scope	8~23 cm
Lubrication methods	Automatic
Control mode	Manual/Remote
Max. pumping height	42.1 m
Reach depth	29 m
Slewing radius of boom	37.3 m
Slewing angle of boom	±360°
Stretching angle of 1 section boom	90°
Stretching angle of 2 section boom	180°
Stretching angle of 3 section boom	180°
Stretching angle of 4 section boom	230°
Stretching angle of 5 section boom	210°
Front outrigger type	ARC-type

Outrigger span

Longitudinal span	7470 mm
Front outriggers	7410 mm
Rear outriggers	7600 mm



CONTACT US: