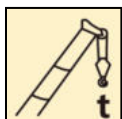


# XCA100\_Y全地面起重机 / All Terrain Crane

## 技术规格书

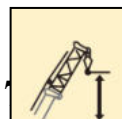
Basic technical specification



100 t\*



60 m



88 m



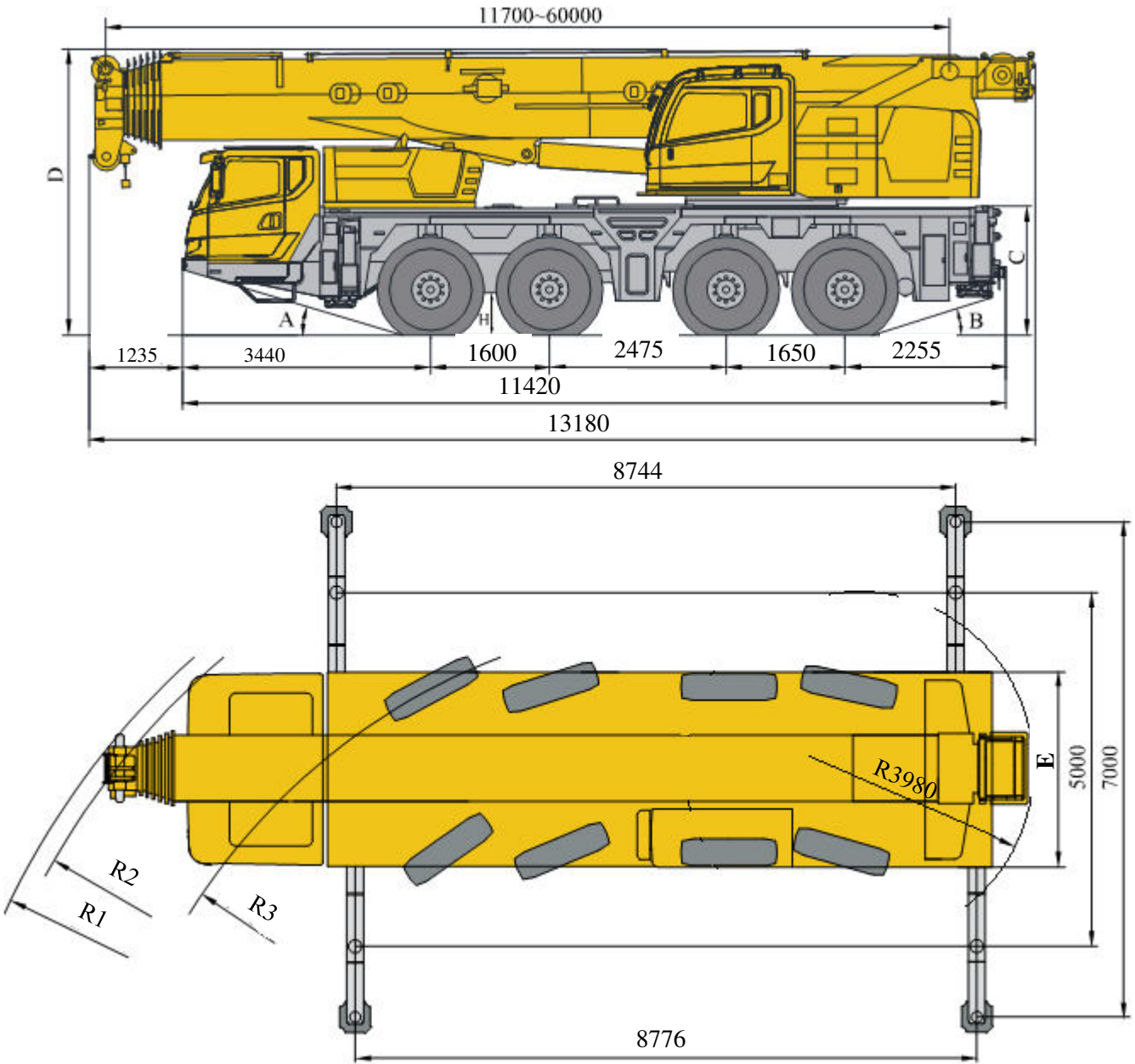
2020年05月03版


# 目录

## Contents

<b>目录</b> <b>Contents</b>	
尺寸参数 Dimensions	3
整机重量 Total Weight	4
技术规格 Product Specifications	6-11
重量/作业速度 Weight / Working speeds	12
平衡重 Counterweight	13
臂架组合方案 Boom / Jib combinations	14-15
运输部件尺寸 Transportation components dimension	16
主臂 Boom	17-19
主臂+副臂 Boom + Jib	20-22
主臂+独立臂头 Boom + Independent jib head	23-25
主要技术参数表 Transportation plan	26-27
符号标识 Description of symbols	28
注意事项 Notes	29

# 尺寸参数 Dimensions




	A	B	C	D	E	R1	R2	R3	H
385/95 R 25 (14.00 R 25)	17°	16.5°	1850	4000	2750	11350	11000	9000	280
445/95 R 25 (16.00 R 25)	18.5°	18.7°	1900	4050	2750	11350	11000	9000	330

# 整机重量

## Total Weight

转场行驶状态Non-road driving condition.

 轴荷状态(kg) State of axle load	1、2轴 1、 2 axle	3、4轴 3、 4 axle	总重 total
基本配置：Basic configuration: 配385/95R25轮胎，携带四个支脚盘 其余不带。 With 385/95R25 tires, with four foot plates, the rest is not.	12000kg	12000kg	48000kg
行驶状态选配情况：			
16.00R25	+133kg	+133kg	+532kg
带副起重臂、副起升机构、胶管卷筒 With the auxiliary lifting arm, auxiliary lifting mechanism, hose reel.	13000kg	12600kg	51200kg

说明：上述为理论计算值，仅供参考，轴荷根据实际配置的不同也会有所变化。

Note: the above are theoretical values, axle load may vary with the actual configuration.

## 技术规格

### Technical specifications



#### 底盘

##### 车架

徐工设计、制造，车架采用倒梯形截面车架结构，高强度钢材制造

##### 支腿

4点支撑，水平和垂直支腿全液压操纵，底盘两侧装有电控操纵控制台，控制台装夜光水平仪，并有照明灯和增速按钮；支腿油缸均设有单向阀，且垂直支腿带有双向液压锁

##### 发动机

六缸、柴油、重汽曼MC11.43-30  
额定功率/转速：319kw/1900rpm  
最大输出扭矩/转速：  
2100Nm/1200rpm  
排放标准：国III  
油箱容积：350L

##### 变速箱

中国重汽12档自动变速箱

##### 车桥

德国KESSLER高强度车桥，三桥驱动：  
8×6×8

##### 分动箱

德国KESSLER机械式分动箱，输出扭矩大。装有应急转向油泵，当车辆失去动力被拖动时，实现转向动力。

##### 转向

前两桥机械转向，后两桥徐工电液比例转向系统

##### 悬挂

悬架均采用油气悬挂系统：悬架油缸行程为-100mm ~ +140mm

**液压系统** 负载敏感比例控制系统，液压泵通过取力器联接至发动机，用于支腿和悬架动作等。

**电气系统** 直流24伏特，2个12伏特电池组串联。

##### 轮胎

14.00R25

##### 制动

双回路、气制动、盘式制动器；  
行车制动：双回路气压制动，作用于所有车轮。  
驻车制动：弹簧储能制动，作用于2-4轴车轮。  
辅助制动：发动机缸内制动、变速箱缓速制动

##### 驾驶室

新型钢结构豪华全宽驾驶室，采用悬浮式连接结构，后部装有减震器。配备电动升降器的安全玻璃、可调式座椅、电动调节后视镜、可调节高度及角度方向盘，倒车显示器、大屏幕彩色液晶显示器等。新型组合式中控台布局安全合理，采用圆弧造型，体现人性化的设计。  
标配冷暖空调。

# 技术规格

## Technical specifications

	<b>上车</b>
<b>主臂</b>	7节，“U”形截面的筒形焊接结构，主臂长度：11.7m~60m
<b>变幅机构</b>	单变幅油缸，采用重力+动力下降模式，带有自补偿功能的电比例控制平衡阀。变幅速度： $-0.5^{\circ} \sim 83^{\circ} \leq 50s$
<b>主起升机构</b>	液压马达驱动，内置式行星齿轮减速机和常闭式制动器，专用防乱绳卷筒，抗缠绕钢丝绳； 起升速度(单绳，第5层，空载)： $\geq 130m/min$ 钢丝绳(直径×长度)： $\varphi 18mm \times 290m$
<b>回转机构</b>	单排四点接触球外齿式回转支承，由液压马达驱动行星齿轮回转减速器驱动，可连续回转360°。 具有动力控制或自由回转的功能，可无级调速；最大回转速度 $\geq 1.7r/min$
<b>操纵方式</b>	上车操纵方式为CAN-BUS总线操纵，采用PLC集成智能控制技术，CAN-BUS总线的控制网络，除常规控制功能外，还具有系统实时监测、故障自动诊断、模糊工况查询
<b>发动机</b>	四缸、柴油、戴姆勒公司 OM924LA.E3A/1 额定功率/转速：145kw/2200rpm 最大输出扭矩/转速：705N.m/1200-1600rpm 排放标准：国III 油箱容积：300L

<b>安全装置</b>	液压平衡阀；液压溢流阀；液压双向锁；力矩限制器；显示器、中心控制器、长度/角度传感器、过卷开关、油压传感器、操纵杆弹簧式回中系统；三圈保护器，防止钢丝绳过放；臂头设置高度限位，防止钢丝绳过卷；风速仪
<b>操纵室</b>	新型钢制操纵室，装有无视野死角的前景窗，安全玻璃，车窗装有遮阳板，推拉式车门，操纵员座椅靠背可倾斜定位，操纵杆安装在座椅两侧的扶手上；带推拉踏板；前窗顶窗装有雨刮器；标准的操纵控制件和指示器，人机工程学合理布局；上车操纵室可向后倾斜 $20^{\circ}$ ；配置冷暖空调
<b>液压系统</b>	电比例变量柱塞泵用于起升、变幅、伸缩、回转；负荷敏感式比例多路换向阀；大功率风冷式液压油散热器；液压油箱容积：1000L
<b>平衡重</b>	总重21.5t有0t、4.3t、9.1t、14.7t、19.7t和21.5t七种组合方式。



## 技术规格

### Technical specifications

#### 选装配置

<b>固定副臂</b>	桁架式焊接结构，具有0°、15°、30°三种固定副臂安装角。固定副臂长度：10.6m、18.1m
<b>独臂臂头</b>	2.9m
<b>加长节</b>	两节7米加长节
<b>副起升机构</b>	液压马达驱动，内置式行星齿轮减速机和常闭式制动器，专用防乱绳卷筒，抗缠绕钢丝绳； 起升速度(单绳，第2层，空载)： ≥97m/min 钢丝绳(直径×长度)：φ18mm×200m
<b>平衡重</b>	两侧平衡重3.6吨*2
<b>起重钩</b>	20吨钩
<b>轮胎</b>	16.00 R25
<b>防火帽</b>	排气管安全防火罩

# 技术规格

## Technical specifications



### Chassis

#### Frame

Designed and manufactured by XCMG, made of high strength steel with inverted trapezium cross-section

#### Outriggers

Four-point supporting, hydraulic control. An outrigger control station at each side of the chassis. A luminous level gauge, an illuminator and an accelerator button on each control station. A check valve for each outrigger cylinder and a double-way hydraulic valve for each jack cylinder.

#### Engine

MANMC11.43-30, 6 cylinders, diesel.  
Rated power/rpm: 319 kw/1900 rpm.  
Rated torque/rpm: 2100Nm/1200 rpm.  
Emission standard: China III  
Fuel tank capacity: 350 L.

#### Transmission

Sino-Trunk 12-speed automatic transmission.

#### Axle lines

High-strength axles, three axles for driving: 8 × 6 × 8

#### Transfer case

Mechanical transfer box is originally import-ed from KESSLER Germany, equipped with an emergency steering oil pump, which is used to supply steering power while the vehicle is towed after losing power.

#### Steering system

Front two axles are mechanically steered, rear two axles are equipped with XCMG electric- hydraulic steering system

#### Suspension system

All wheels with hydro-pneumatic suspension system: the suspension cylinder travel ranges from -100mm ~ +140mm.

#### Hydraulic system

Load sensitive proportional control system. The hydraulic pump is connected to the engine through PTO for controlling the movements of outriggers and suspensions.

#### Electrical System

DC 24 volts is in series with two 12-volt battery packs.

#### Tires

14.00R25

#### Braking system

Double circuits, pneumatic and disc brake.  
Service brake: double-circuit air pressure brake, acting on all wheels.  
Parking brake: spring-loaded brake, acting on the wheels of axles 2, 3 and 4;  
Auxiliary brake: engine compression brake and transmission retarder brake.


#### Driver's cab

New type steel structure full dimension cab with suspension connecting structure, and there is shock absorb fitted at the rear of the cab, equipped with adjustable seats, safety glass of electrically operated door window lift, electric-adjustable mirrors, steering wheel adjustable in height and angle, reverse displayer, large screen liquid crystal display. Combined control panel reasonably arranged ergonomically designed concept. Heater and air conditioner are standard.



# 技术规格

## Technical specifications

	Superstructure
<b>Boom</b>	11.7 m~60 m, 7-section boom with U-shaped cross-section, welded structure
<b>Elevating System</b>	Single cylinder, gravity fall plus power lowering boom mode, with self-compensation electric-proportional counterbalance valve. Speed: $\leq 50$ s for elevating operation from $-0.5^{\circ}$ to $+83^{\circ}$ .
<b>Main Winch System</b>	Hydraulic motor with planetary gear reducer and constant-closed brake, specific anti-disorder rope winding drum, anti-coiling wire rope. Speed (single line, the 5th layer, no load): $\geq 130$ m/min. Rope diameter $\times$ length: $\phi 18$ mm $\times$ 290 m
<b>Slewing system</b>	Single-row four-point ball contact external tooth slewing ring is driven by the planetary gear reducer of slewing mechanism driven by a hydraulic motor, and may continuously slew $360^{\circ}$ . Power control or free slewing function and stepless speed regulation are available. Max. slewing speed is 1.7 r/min.
<b>Control system</b>	CAN-BUS is used for controlling the superstructure. With PLC intelligent control technology and CAN-BUS control network, many functions such as real-time monitoring, fault diagnostic, inquiry of working conditions and remote counterweight installation (optional) are available, besides of normal control function.
<b>Superstructure engine</b>	OM924LA.E3A/1, in-line four-cylinder water-cooled EFI diesel engine, manufactured by Benz, rated power 145kw/2200rpm, max. torque 705N.m/1200-1600rpm, Stage III emission standards. Fuel tank capacity : 300L.

**Safety devices**

Hydraulic counterbalance valve, hydraulic relief valve, double-way hydraulic valve, LMI, display, central controller, length/angle sensor, over-winding switch, oil pressure sensor, joystick spring return system, lowering limiter for preventing wire rope from over-releasing, anti-two block at boom head for preventing wire rope from over-winding and anemometer

**Operator's cab**

New steel cab with a full-view windshield, safety glass, sun shield, adjustable operator's seat. Windshield wiper and roof window wiper.  
Armrest-integrated crane control levers. Ergonomically arranged standard controls and indicators in the cab. A sliding door and a pull-out step for easy and safe access to the cab.  $20^{\circ}$  tilted. Heater and air conditioner.

**Hydraulic system**

the electric proportional variable piston pump is used to control hoisting, elevating, telescoping and slewing operations; load sensitive proportional multi-way directional control valve; air-cooled hydraulic oil cooler  
Tank capacity: 1000L

**Counter weight**

Total weight is 21.5t  
5 counterweight combinations of 0t, 4.3t, 9.1t, 14.7t, 19.7t, 21.5t, and 28.7t are available.

## 技术规格

## Technical specifications

### Additional equipment

<b>Fixed jib</b>	Lattice jib, welded. Three offset angles of 0° , 15° and 30° . 10.6 m/18.1 m.
<b>Independent jib head</b>	2.9m
<b>Extended jib</b>	Two insets each 7 m
<b>Auxiliary winch System</b>	Hydraulic motor with planetary gear reducer and constant-closed brake, specific anti-disorder rope winding drum, anti-coiling wire rope. Speed (single line, the 2nd layer, no load): $\geq 97$ m/min. Rope diameter $\times$ length: $\phi 18$ mm $\times$ 200 m
<b>Counter weight</b>	Combined counterweight on both sides, 3.6 ton *2
<b>Hook</b>	20 ton hook
<b>Tires</b>	16.00 R25
<b>Flash hider</b>	Flash hider install on Exhaust pipe

## 重量 Weights



Achse Axle	1	2	3	4	Gesamtgewicht Total weight
t	12	12	12	12	48



吊钩 Hook block	倍率 No. of lines	吊钩重量 Weight kg	吊钩尺寸 Dimension mm	备注 Optional
65 t	12	646	1477×600×608	双钩 Double hook, 标配Standard
40 t	6	391	1301×600×352	双钩 Double hook, 标配Standard
20 t	3	270	1279×266×595	单钩 Single hook, 选配Optional
7t	1	223	770×426×426	单钩 Single hook, 标配Standard

## 作业速度 Working speeds



385/95 R 25  
( 14.00 R 25 )  
445/95 R 25  
( 16.00 R 25 )

2 ~ 80

2,2~85

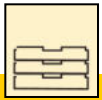
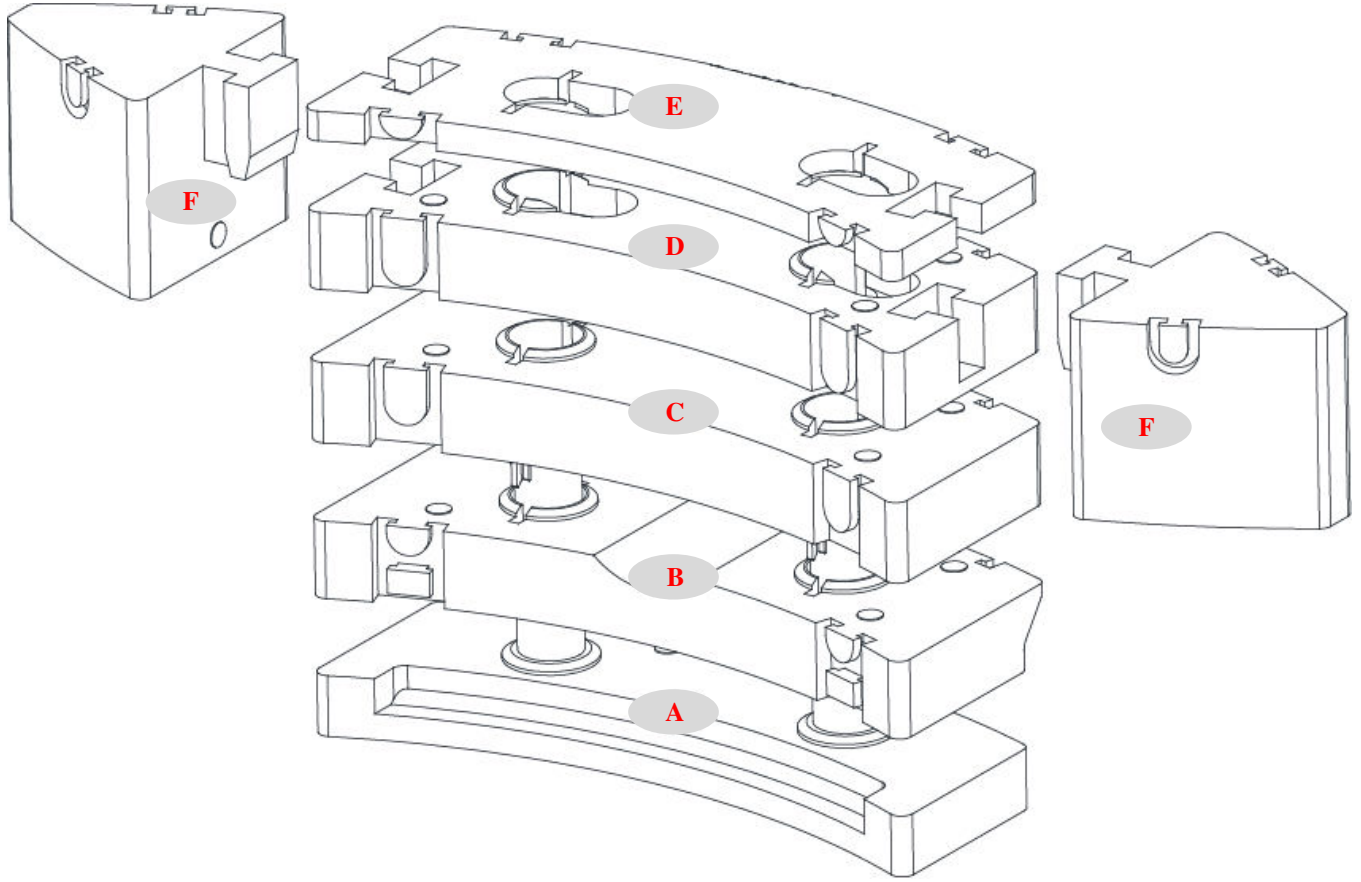
60%

53%



作业机构 Drive	作业速度 Working speed	最大单绳拉力 Max. single line pull	钢丝绳直径/长度 Rope diameter/ length
	0-130m/min 单绳, 第5层, 空载 single line, 5th layer, no load	6t	18 mm/290 m
	0-97m/min 单绳, 第2层, 空载 single line, 2th layer, no load	6.5 t	18 mm/200 m
	0-1.7 rpm		
	从-0.5°抬起至83°约50s Approx. 50s for boom elevation from -0.5° to 83°		
	从11.7m伸出至60m约600s Approx. 600s for boom extension from 11.7m to 60m		

# 平衡重 Counterweight

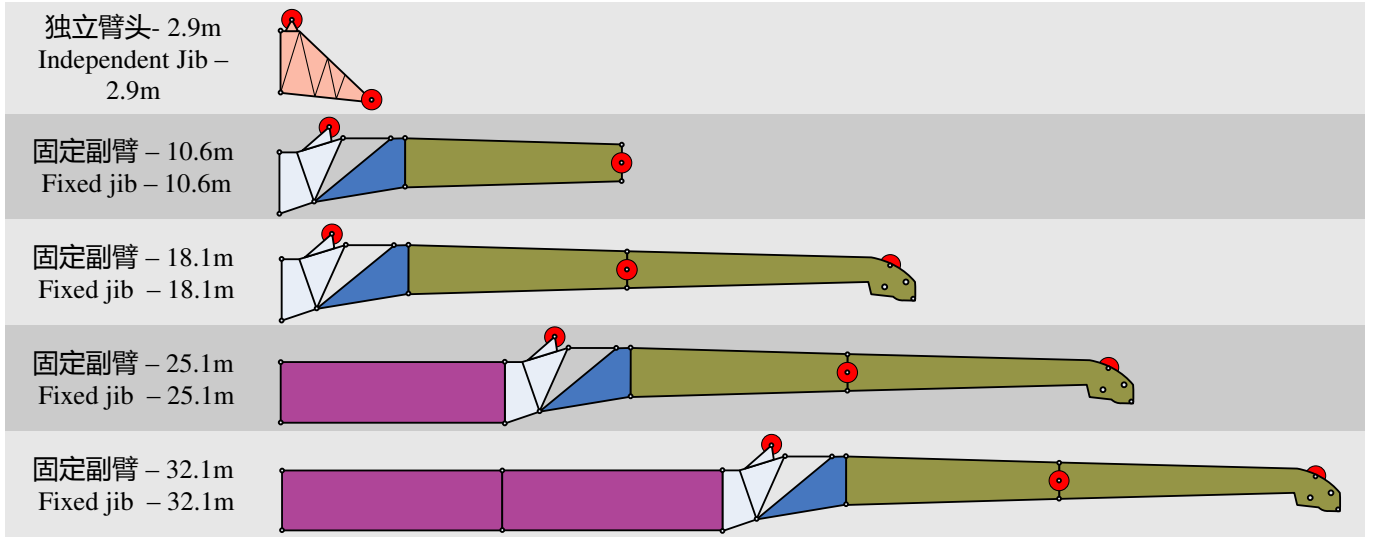


平衡重 Counterweight	A	B	C	D	E	F
尺寸 (长×宽×高) Size (L×W×H) m	2,75×1,11 ×1,344	2,75×1,23 ×0,356	2,75×1,23 ×0,369	2,75×1,23 ×0,355	2,75×1,23 ×0,123	1,18×1,016 ×0,827
重量 Weight t	4,3	4,8	5,6	5	1,8	3,6

工况模式 Working mode	28,7t	21,5 t	19,7 t	14,7t	9,1	4,3
组合形式 Combinations	A+B+C+D+E +F×2	A+B+C+D+E	A+B+C+D	A+B+C	A+B	A

# 臂架组合方案

## Boom / Jib combinations



部件 Component	结构形式 Structure	尺寸 (长×宽×高) m Size (L×W×H) m	重量 kg Weight kg
连接架 Connection bracket		2.075×0.945×1.553	300
旋转架 Swinging bracket		2.86×0.724×1.31	260
一节副臂总成 First jib section assembly		7.485×0.653×0.85	470
二节副臂总成 Second jib section assembly		7.53×0.46×0.66	340
副臂加长节 Jib extension		7.1×0.95×1.313	510
独立臂头 Independent jib		3.208×0.97×2.413	520

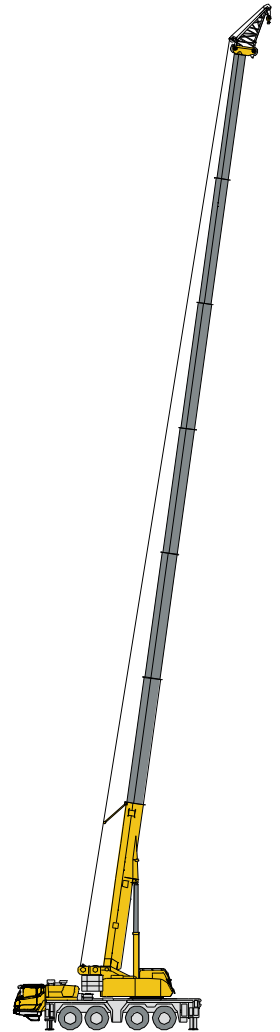
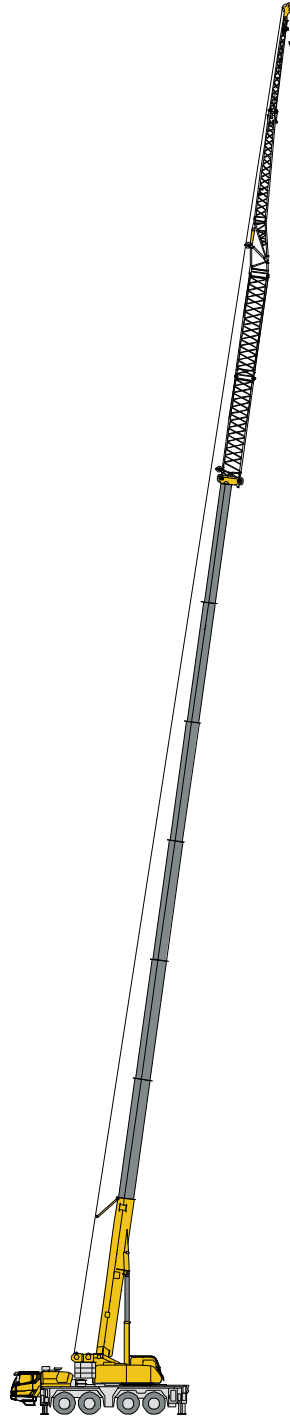
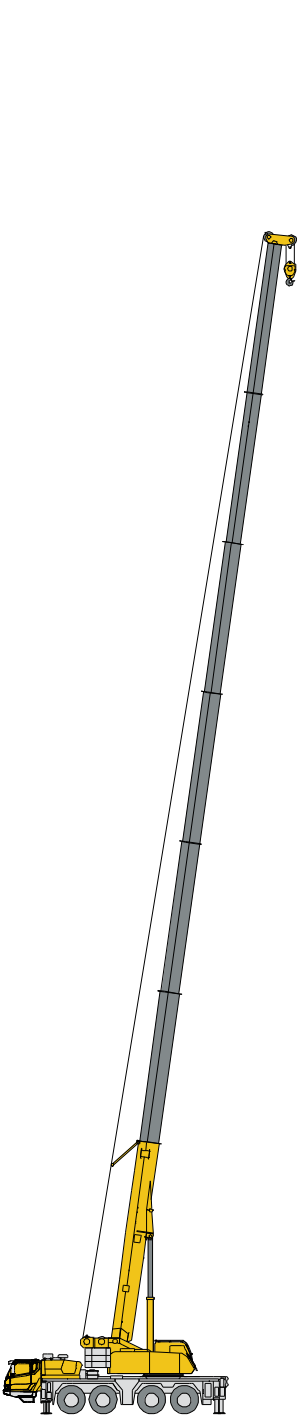
# 臂架组合方案

## Boom / Jib combinations

T 主臂

J 副臂

I 独立臂头



主臂  
Telescopic boom

副臂  
Jib

独立臂头  
Independent jib

T : 11.7~60 m

T : 48.7~56.1+7+7 m  
J : 10.6~18.1 m

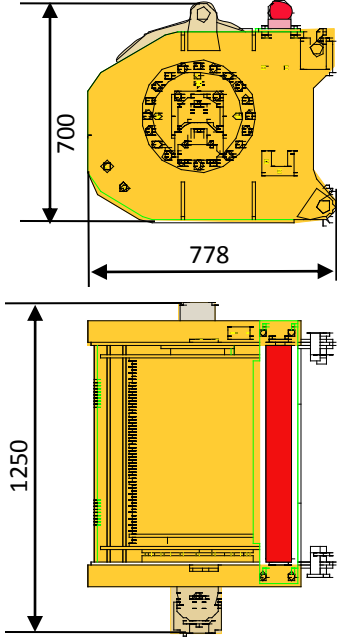
T : 11.7~60 m  
I : 2.9 m



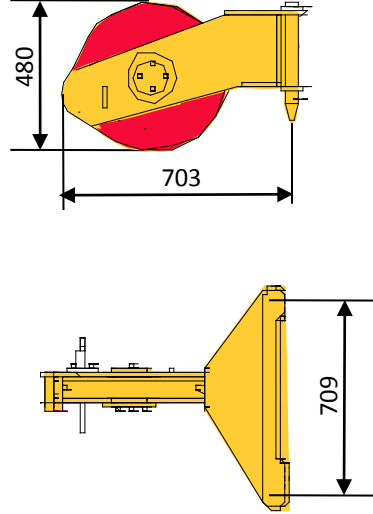
# 运输部件尺寸

## Transportation components dimension

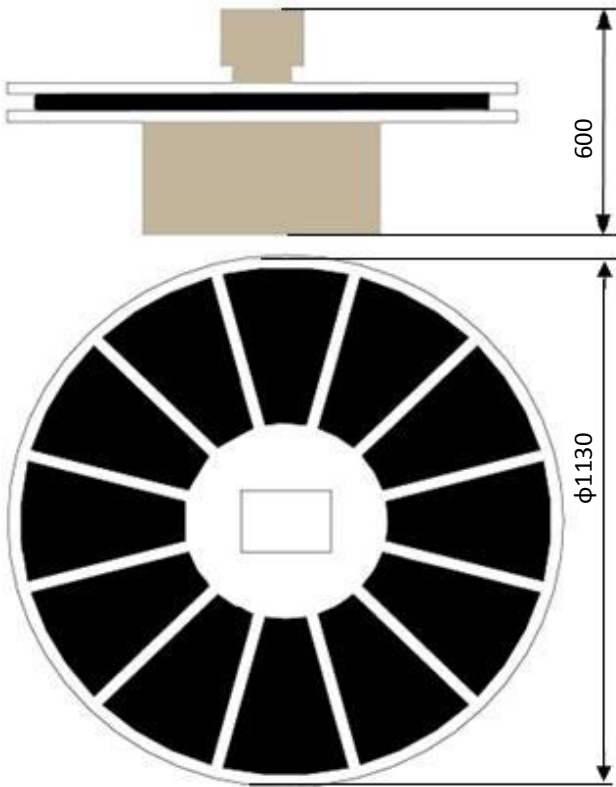
副起升机构 (含钢丝绳) 900kg  
Auxiliary winch (rope included)

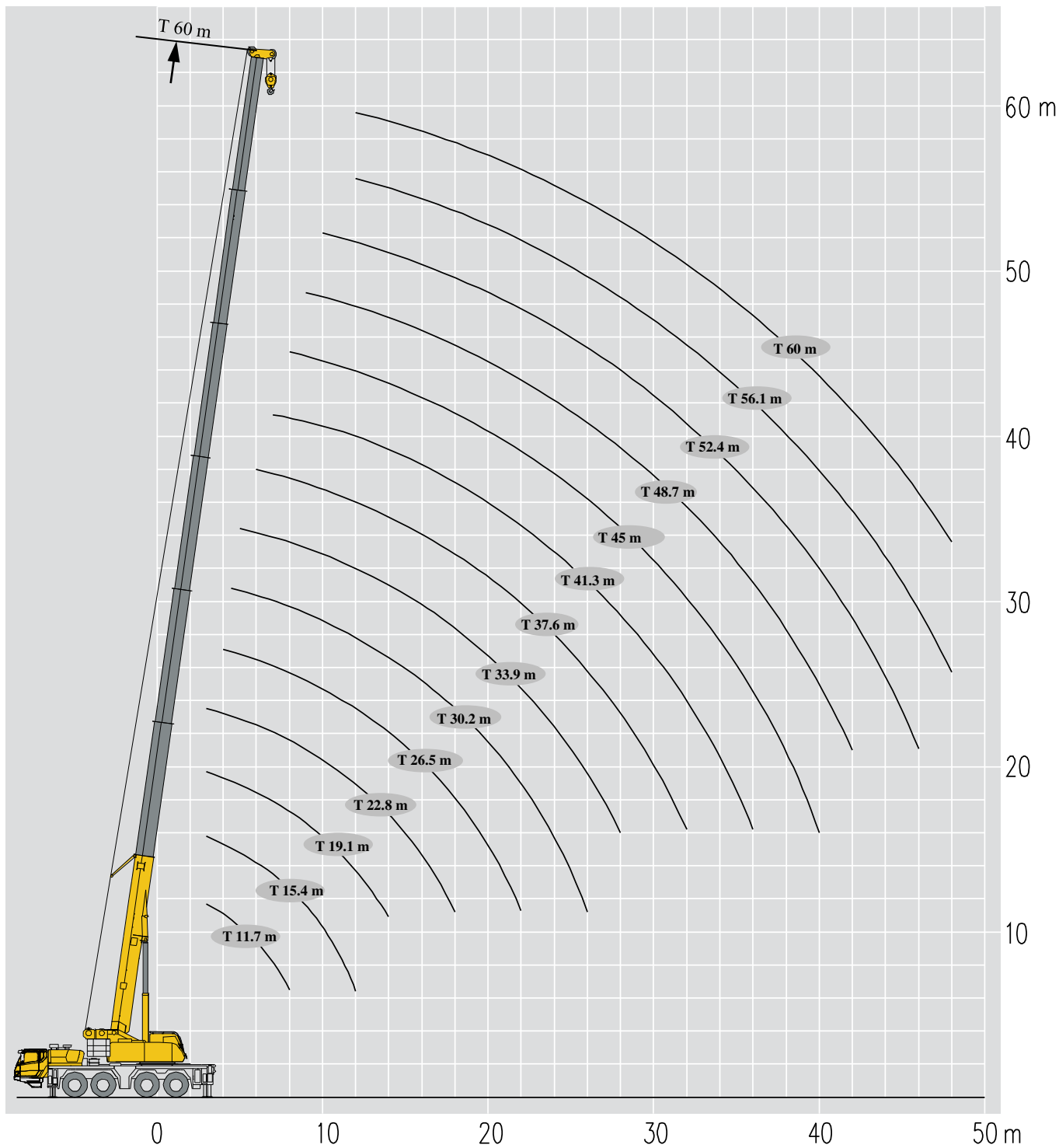


臂端单滑轮 95kg  
Single top



胶管卷筒 380kg  
Hose reel





# 起重性能表

## Lifting capacities

T 11.7~33.9m



m	11.7-33.9m T 8.76m×7m 360° 28.7t										m
	11.7 m	11.7 m	15.4 m	15.4 m	15.4 m	19.1 m	19.1 m	19.1 m	22.8 m		
3	100*	65.0	65.0	63.5	61.3	60.5	59.5	59.0	55.5	3	
3.5		61.7	61.8	60.0	59.5	57.7	56.8	56.3	55.1	3.5	
4		59.6	59.0	58.5	57.0	54.6	53.9	53.1	52.0	4	
4.5		55.1	55.4	55.0	51.7	51.8	51.0	49.6	49.7	4.5	
5		45.2	50.4	48.5	45.6	49.6	48.6	48.0	47.0	5	
6		42.1	44.0	44.8	40.0	43.9	45.2	43.0	43.2	6	
7		38.9	39.0	39.5	38.0	38.3	39.1	40.2	38.4	7	
8		34.3	33.6	34.9	35.3	34.1	34.8	35.8	34.3	8	
9			31.0	31.6	30.8	31.5	31.8	32.1	31.8	9	
10			27.5	28.0	28.1	27.5	28.2	28.8	27.0	10	
12			22.0	22.4	22.6	22.5	23.0	23.2	22.8	12	
14						18.2	19.1	19.2	19.0	14	
16									15.0	16	
18									12.2	18	
组合 combi nation	000000	010000	000100	000010	011000	001100	000110	011100	010000	组合 combi nation	

m	22.8-33.9m										m
	22.8 m	22.8 m	26.5 m	26.5 m	26.5 m	30.2 m	30.2 m	30.2 m	33.9 m		
3	54.8	54.5								3	
3.5	54.2	53.8								3.5	
4	51.3	50.7	49.0	48.7	48.5					4	
4.5	49.1	48.6	46.2	46.0	45.6	45.2	45.0	41.3		4.5	
5	46.1	45.7	43.8	43.6	43.0	43.2	42.5	39.2	39.0	5	
6	42.5	42.1	39.9	39.5	38.9	39.3	38.5	35.9	37.4	6	
7	40.3	38.0	36.0	36.8	35.7	36.0	35.2	33.2	34.2	7	
8	36.0	36.0	34.0	34.2	34.5	32.5	33.7	30.3	31.8	8	
9	32.2	32.2	31.5	31.8	32.1	31.4	31.8	28.4	29.8	9	
10	27.5	28.1	29.8	29.8	30.7	28.0	28.4	26.5	27.9	10	
12	23.0	23.5	22.1	22.5	22.9	23.3	24.9	22.2	22.2	12	
14	19.2	19.4	18.2	18.8	19.3	18.9	19.3	19.6	19.0	14	
16	16.0	16.3	14.4	15.7	16.8	15.1	16.4	16.6	16.0	16	
18	12.8	13.8	11.7	12.9	13.9	12.3	13.5	14.1	13.4	18	
20			9.5	10.7	11.7	10.1	11.4	12.2	11.2	20	
22			7.8	9.0	10.0	8.4	9.6	10.5	9.5	22	
24						7.1	8.2	9.1	8.1	24	
26						5.9	7.1	8.0	7.0	26	
28									6.0	28	
组合 combi nation	001110	000111	111100	011110	001111	111110	011111	001112	012111	组合 combi nation	

# 起重性能表

## Lifting capacities

T 33.9~60m

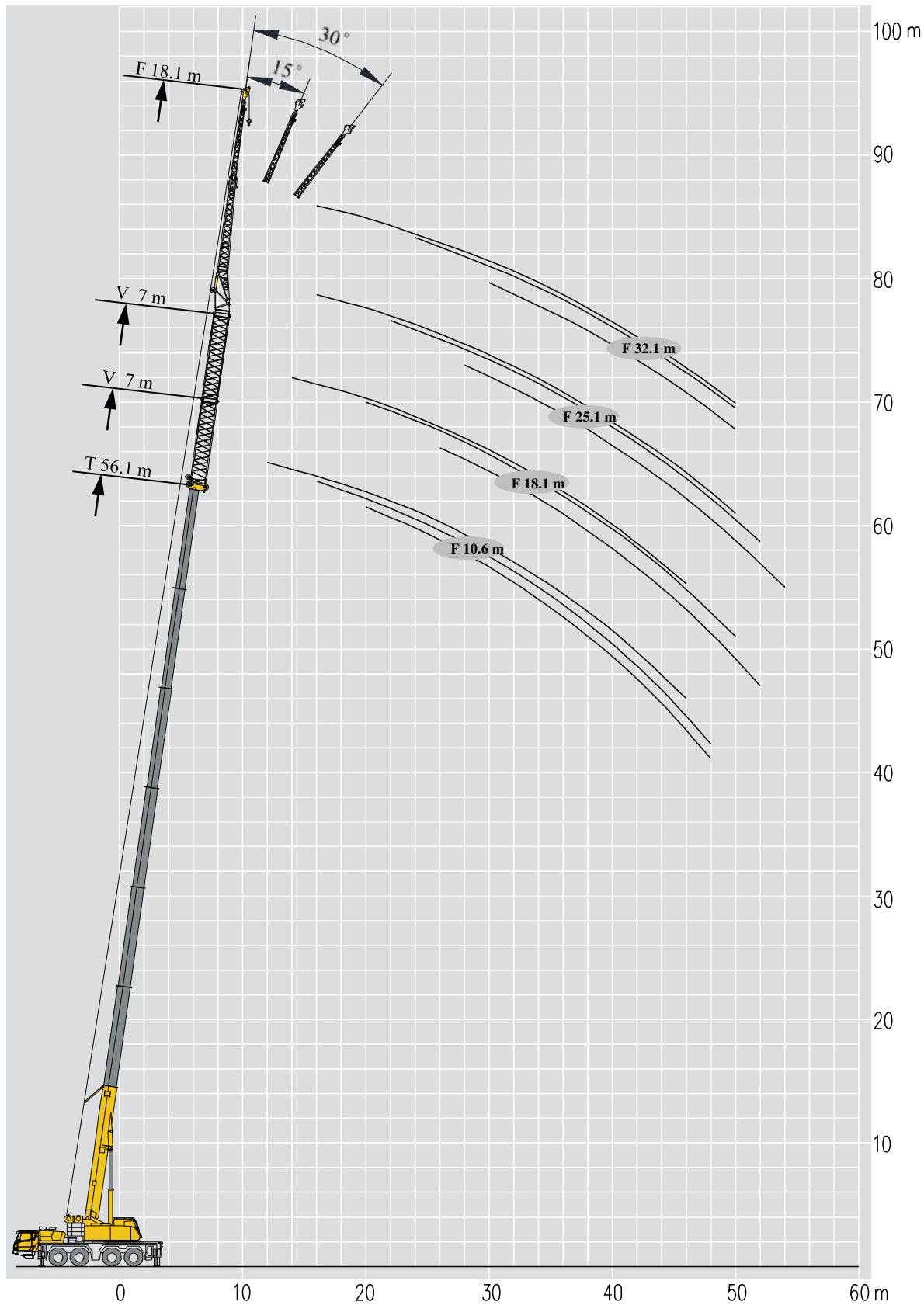


m	33.9 m										m
	33.9 m	33.9 m	37.6 m	37.6 m	37.6 m	41.3 m	41.3 m	41.3 m	45 m		
5	39.9	38.0									5
6	37.6	37.2	34.4	30.8	26.5						6
7	34.4	34.0	33.1	28.7	24.8	28.1	27.5	26.7			7
8	32.0	31.6	31.0	28.3	25.2	27.8	27.0	25.4	23.2		8
9	29.9	29.7	28.8	26.1	23.8	27.3	26.2	24.0	23.0		9
10	28.2	28.0	27.2	24.2	22.4	25.5	24.4	22.8	21.3		10
12	23.3	23.0	23.0	21.1	20.0	22.2	21.3	20.6	19.4		12
14	18.4	19.3	19.0	18.4	18.0	19.0	18.9	18.7	17.4		14
16	15.7	16.3	16.0	16.3	16.2	15.6	16.0	16.6	15.1		16
18	12.9	14.0	13.1	13.9	14.0	12.8	13.2	13.7	12.3		18
20	10.8	11.8	11.0	11.8	12.1	10.6	11.0	11.6	10.2		20
22	9.1	10.1	9.3	10.0	10.4	8.9	9.3	9.9	8.5		22
24	7.7	8.7	7.9	8.6	9.0	7.5	7.9	8.5	7.1		24
26	6.5	7.8	6.7	7.5	7.8	6.4	6.8	7.5	6.0		26
28	5.6	6.8	5.8	6.5	6.8	5.4	5.8	6.3	5.0		28
30			4.9	5.7	6.0	4.6	5.0	5.5	4.2		30
32			4.2	5.0	5.3	3.9	4.3	4.8	3.5		32
34						3.3	3.7	4.2	2.9		34
36						2.8	3.1	3.6	2.3		36
38									1.9		38
40									1.4		40
组合 combi nation	111111	011112	111211	012112	011122	211121	121112	111122	222111	组合 combi nation	

m	45 m										m
	45 m	45 m	48.7 m	48.7 m	48.7 m	52.4 m	52.4 m	56.1 m	60 m		
8	20.1	22.8									8
9	18.5	21.9	20.9	20.1	18.6						9
10	17.1	20.9	19.7	19.3	17.8	17.7	16.8				10
12	15.0	18.9	17.5	16.9	16.0	15.7	14.9	13.3	10.9		12
14	13.2	16.9	16.2	15.0	14.2	14.5	13.2	12.7	10.7		14
16	11.7	15.2	14.4	13.4	12.8	13.3	11.7	12.5	10.6		16
18	10.5	13.1	12.0	12.1	11.5	11.8	10.4	10.5	9.4		18
20	9.5	11.7	10.8	10.9	10.4	10.4	9.3	9.3	8.4		20
22	8.7	9.9	9.2	9.6	9.4	8.8	8.5	8.4	7.7		22
24	7.9	8.5	7.8	8.2	8.5	7.8	7.8	7.7	6.9		24
26	7.2	7.4	6.6	7.0	7.4	6.7	7.1	6.3	5.9		26
28	6.7	6.4	5.7	6.1	6.4	5.7	6.2	5.7	5.1		28
30	6.0	5.6	4.9	5.2	5.5	4.9	5.3	5.0	4.7		30
32	5.2	4.9	4.1	4.5	4.8	4.2	4.6	4.3	4.3		32
34	4.6	4.3	3.5	3.9	4.2	3.6	4.0	3.6	3.7		34
36	4.1	3.7	3.0	3.4	3.6	3.1	3.5	3.1	3.1		36
38	3.6	3.2	2.5	2.9	3.2	2.6	3.0	2.6	2.6		38
40	3.2	2.8	2.1	2.4	2.7	2.2	2.5	2.2	2.2		40
42			1.7	2.1	2.3	1.8	2.2	1.8	1.8		42
44						1.5	1.8	1.5	1.5		44
46						1.1	1.5	1.1	1.2		46
48									0.9		48
组合 combi nation	012222	111222	221122	122122	112222	222122	122222	222222	333333	组合 combi nation	

# 起升高度曲线图 Lifting heights

副臂  
Jib



# 起重性能表

## Lifting capacities

T 48.7~56.1m

m	48.7-56.1 m			10.6 m			8.76m×7m			360°			28.7 t			m
	48.7 m			52.4 m			56.1 m									
	10.6 m			10.6 m			10.6 m									
	0°	15°	30°	0°	15°	30°	0°	15°	30°	0°	15°	30°	0°	15°	30°	
12	9.6			8.2			6.5									
14	9.5	9.4		8.1			6.4	6.5								
16	9.3	9.2		8.0	8.0		6.4	6.5								
18	9.1	8.7	8.2	8.0	7.8	7.6	6.4	6.4								
20	8.1	7.7	7.4	7.1	6.9	6.7	6.3	6.2	6.1							
22	7.1	6.8	6.7	6.3	6.1	6.0	5.6	5.4	5.4							
24	6.3	6.1	6.0	5.6	5.5	5.4	5.0	4.9	4.8							
26	5.6	5.5	5.4	4.9	4.9	4.8	4.4	4.3	4.3							
28	5.1	5.0	4.9	4.4	4.4	4.4	3.9	3.8	3.8							
30	4.6	4.5	4.4	3.9	3.9	3.9	3.4	3.4	3.4							
32	4.1	4.1	4.1	3.5	3.5	3.5	3.0	3.1	3.0							
34	3.7	3.7	3.7	3.1	3.1	3.2	2.6	2.7	2.7							
36	3.3	3.3	3.3	2.8	2.8	2.8	2.3	2.4	2.4							
38	3.0	3.0	3.0	2.5	2.5	2.5	2.1	2.1	2.1							
40	2.6	2.7	2.7	2.1	2.2	2.3	1.8	1.9	1.9							
42	2.2	2.3	2.5	1.8	2.0	2.0	1.5	1.6	1.7							
44	1.7	2.0	2.1	1.5	1.6	1.8	1.2	1.2	1.4							
46	1.4	1.6	1.7	1.2	1.3	1.4	0.8	1.0	1.0							
48	1.1	1.2	1.3	1.0	1.0	1.2		0.8	0.8							
50	0.8	0.9	1.0		0.8	1.0										
组合 combinati on	221122			222122			222222			组合 combinati on						

m	48.7-56.1 m			18.1 m			8.76m×7m			360°			28.7 t			m
	48.7 m			52.4 m			56.1 m									
	18.1 m			18.1 m			18.1 m									
	0°	15°	30°	0°	15°	30°	0°	15°	30°	0°	15°	30°	0°	15°	30°	
12	5.0			4.3			3.8									
14	4.8			4.2			3.8									
16	4.7			4.2			3.7									
18	4.5	4.2		4.0	3.8		3.7	3.6								
20	4.5	4.0		4.0	3.7		3.6	3.5								
22	4.3	3.9	3.5	4.0	3.7		3.6	3.5								
24	4.2	3.8	3.4	3.9	3.6	3.4	3.6	3.4								
26	4.0	3.7	3.3	3.9	3.5	3.3	3.5	3.4	3.4							
28	3.9	3.6	3.3	3.8	3.5	3.3	3.5	3.3	3.3							
30	3.8	3.6	3.3	3.6	3.4	3.3	3.2	3.2	3.2							
32	3.7	3.5	3.3	3.3	3.3	3.2	2.8	2.8	2.9							
34	3.4	3.4	3.2	2.9	2.9	3.0	2.4	2.5	2.6							
36	3.1	3.1	3.1	2.5	2.6	2.7	2.2	2.3	2.3							
38	2.8	2.8	2.8	2.3	2.4	2.4	1.9	2.0	2.1							
40	2.5	2.5	2.6	2.0	2.1	2.2	1.6	1.7	1.8							
42	2.2	2.3	2.3	1.8	1.9	1.9	1.4	1.5	1.6							
44	2.0	2.1	2.1	1.6	1.7	1.7	1.2	1.3	1.4							
46	1.8	1.8	1.9	1.4	1.5	1.5	0.9	1.1	1.2							
48	1.4	1.7	1.7	1.2	1.2	1.3		0.8	1.0							
50	1.2	1.5	1.5	1.0	1.0	1.1										
52	0.9	1.2	1.4	0.8	0.8	0.8										
54		0.9	1.1													
56			0.8													
组合 combinati on	221122			222122			222222			组合 combinati on						



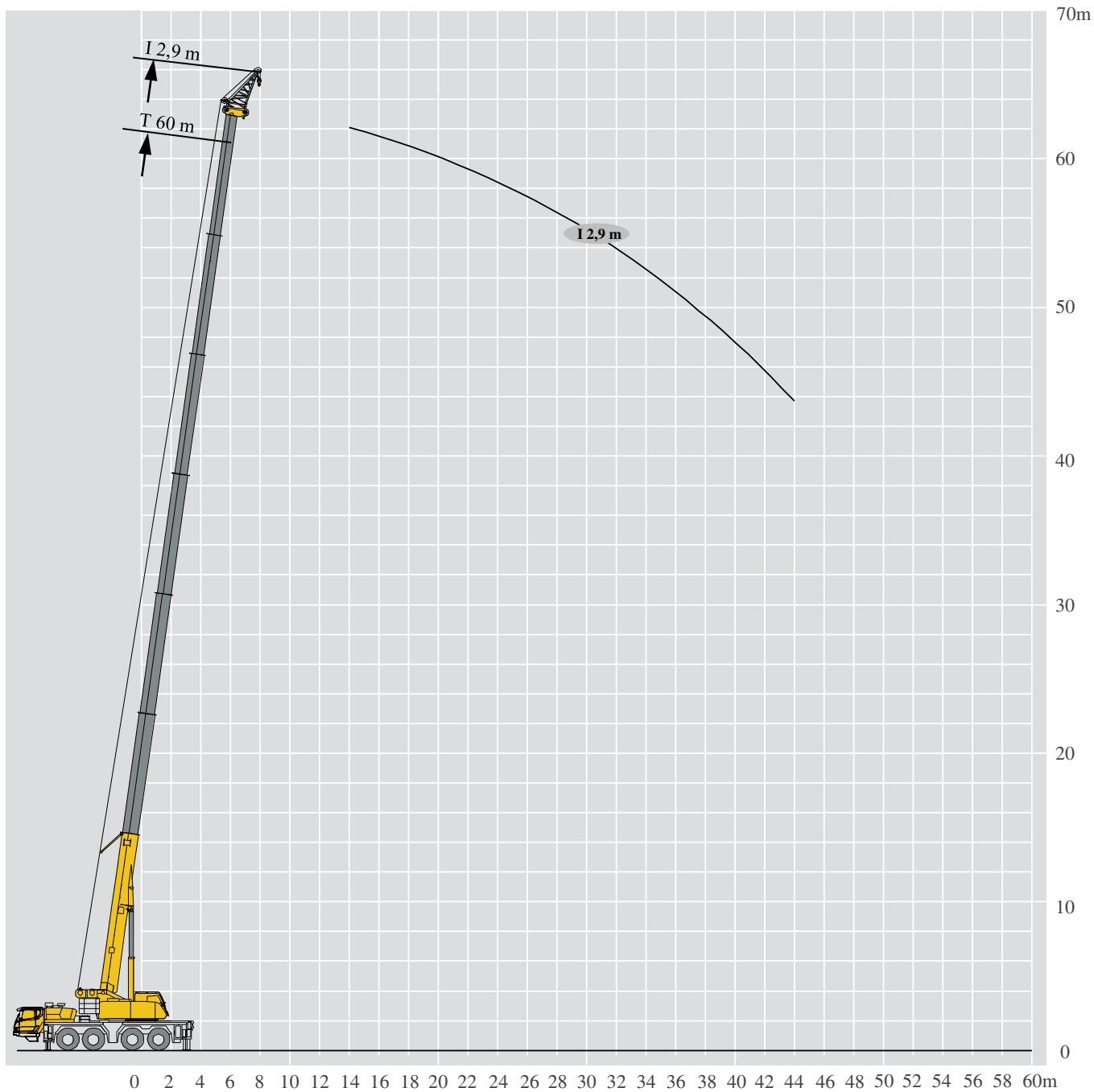
# 起重性能表

## Lifting capacities

T 48.7~56.1m

m	48.7+7 m			52.4+7 m			56.1+7 m			m
	18.1 m			18.1 m			18.1 m			
	0°	15°	30°	0°	15°	30°	0°	15°	30°	
	14	3.5			3.2					
16	3.4			3.1			2.8			16
18	3.3			3.1			2.8			18
20	3.3			3.1			2.7			20
22	3.3	3.3		3.0	3.0		2.7	2.6		22
24	3.3	3.2		3.0	3.0		2.7	2.6		24
26	3.2	3.2	3.1	3.0	2.9		2.7	2.6		26
28	3.2	3.1	3.0	3.0	2.9	2.8	2.7	2.6	2.5	28
30	3.1	3.0	2.8	2.9	2.8	2.7	2.7	2.6	2.5	30
32	3.0	2.9	2.8	2.8	2.8	2.7	2.4	2.5	2.5	32
34	2.8	2.7	2.7	2.5	2.6	2.6	2.1	2.2	2.3	34
36	2.7	2.6	2.6	2.2	2.3	2.4	1.8	2.0	2.1	36
38	2.4	2.5	2.5	1.9	2.1	2.2	1.6	1.7	1.8	38
40	2.1	2.2	2.3	1.7	1.8	1.9	1.3	1.5	1.6	40
42	1.9	2.0	2.0	1.5	1.6	1.7	1.0	1.2	1.4	42
44	1.7	1.8	1.8	1.3	1.4	1.5	0.8	0.9	1.0	44
46	1.5	1.6	1.6	1.0	1.0	1.3			0.8	46
48	1.3	1.4	1.4		0.8	1.0				48
50	1.1	1.2	1.3			0.8				50
52	0.8	1.0	1.1							52
54 组合 combinati on		0.8	0.8							54 组合 combinati on
		221122			222122			222222		

m	48.7+14 m			52.4+14 m			56.1+14 m			m
	18.1 m			18.1 m			18.1 m			
	0°	15°	30°	0°	15°	30°	0°	15°	30°	
	16	2.4			2.2			1.9		
18	2.3			2.2			1.9			18
20	2.3			2.1			1.8			20
22	2.3	2.4		2.1			1.8			22
24	2.3	2.4		2.1	2.2		1.8	1.9		24
26	2.2	2.3		2.0	2.2		1.7	1.8		26
28	2.2	2.3	2.3	2.0	2.1		1.7	1.8		28
30	2.2	2.2	2.2	2.0	2.1	2.0	1.6	1.7	1.8	30
32	2.2	2.2	2.1	2.0	2.0	2.0	1.6	1.7	1.7	32
34	2.1	2.2	2.1	2.0	2.0	2.0	1.6	1.6	1.7	34
36	2.0	2.1	2.0	1.9	1.9	2.0	1.5	1.6	1.7	36
38	2.0	2.0	1.9	1.6	1.8	1.9	1.1	1.5	1.6	38
40	1.8	1.8	1.8	1.4	1.5	1.7		1.1	1.3	40
42	1.6	1.7	1.8	1.0	1.3	1.4			0.9	42
44	1.4	1.5	1.6		1.0	1.0				44
46	1.0	1.3	1.4							46
48		1.0	1.2							48
组合 combinati on										组合 combinati on
		221122			222122			222222		



# 起重性能表

## Lifting capacities

T 11.7~33.9m







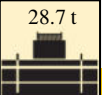
m	Lifting Capacity (t)								m
	11.7 m	15.4 m	15.4 m	15.4 m	19.1 m	19.1 m	19.1 m	22.8 m	
3	29.2	29.2	29.2	29.2	29.2	29.2	29.2	29.2	3
3.5	29.2	29.2	29.2	29.2	29.2	29.2	29.2	29.2	3.5
4	29.1	29.1	29.1	29.2	29.2	29.2	29.2	29.2	4
4.5	29.1	29.1	29.1	29.2	29.1	29.2	29.1	29.2	4.5
5	29.1	29.1	29.1	29.1	29.1	29.1	29.1	29.2	5
6	29.1	29.1	29.1	29.1	29.1	29.1	29.1	29.1	6
7	29.1	29.1	29.1	29.1	29.1	29.1	29.1	29.1	7
8	29.1	29.1	29.1	29.1	29.1	29.1	29.1	29.1	8
9	29.1	29.1	29.1	29.1	29.1	29.1	29.1	29.1	9
10	27.2	27.5	27.4	27.6	27.5	27.6	27.5	27.5	10
12		22	22.2	22.2	22.2	22.2	22.2	22.1	12
14		18.2	18.3	18.2	18.5	18.6	18.6	19.1	14
16					15	15.7	16.1	15.4	16
18					12.2	12.9	13.5	12.6	18
20								10.5	20
组合 combi nation	000000	010000	000100	000010	011000	001100	000110	011100	组合 combi nation

m	Lifting Capacity (t)										m
	22.8 m	22.8 m	26.5 m	26.5 m	26.5 m	30.2 m	30.2 m	30.2 m	33.9 m		
3.5	29.2	29.2									3.5
4	29.2	29.2									4
4.5	29.2	29.2	29.2	29.2	29.2						4.5
5	29.2	29.2	29.2	29.2	29.2						5
6	29.2	29.2	29.2	29.2	29.2	29.2	29.2	29.2			6
7	29.2	29.2	29.2	29.1	29.2	29.2	29.2	29.2	29.2		7
8	29.1	29.1	29.1	29.1	29.1	29.2	29.2	29.2	29.2	29.2	8
9	29.1	29.1	29.1	29.1	29.1	29.2	29.1	29.2	29.2	29.2	9
10	29.1	29.1	29.1	29.1	29.1	29.1	29.1	29.1	29.1	29.2	10
12	27.5	27.6	27.2	27.4	27.3	27	26.9	26.9	26.9	26.2	12
14	22.1	22.2	22.5	22.5	22.5	22.2	22.2	22.2	22.2	22.1	14
16	20	20.5	18.6	18.6	18.7	18.5	18.4	18.4	18.4	18.2	16
18	16.2	17.3	14.8	15.8	15.8	15.3	15.7	15.8	15.8	15.4	18
20	13.4	14.4	12	13.1	13.4	12.6	13.3	13.3	13.3	13.4	20
22	11.3	12.2	10	10.9	11.6	10.5	11.4	12	12	11.4	22
24			8.3	9.2	10.3	8.8	9.8	10.3	10.3	9.7	24
26			6.9	8	8.9	7.4	8.4	9	9	8.3	26
28						6.2	7.3	7.9	7.9	7.1	28
30						5.3	6.3	7.1	7.1	6.2	30
组合 combi nation	001110	000111	111100	011110	001111	111110	011111	001112	012111	组合 combi nation	

# 起重性能表

## Lifting capacities

T 33.9~60m

m	    										m
	33.9 m	33.9 m	37.6 m	37.6 m	37.6 m	41.3 m	41.3 m	41.3 m	45 m		
6	29.2	29.2									6
7	29.2	29.2	28.6	28.6	28.6	23.4	23.4	23.4			7
8	29.1	29.1	28	27.9	27.9	23.4	23.4	23.4	19.2		8
9	29.1	29.1	27.4	27.3	27.4	23	23.2	23	19.2		9
10	26.2	26.3	26	25.8	25.8	22.5	22.5	22.6	18.8		10
12	22	22	21.5	21.4	21.4	20.2	20.2	20.2	18.3		12
14	18.2	18.3	17.8	17.8	18	17	17	17	16.2		14
16	15.4	15.5	15.4	15.4	15.5	14.8	14.8	14.8	14.2		16
18	13	13.3	13.2	13.2	13.2	12.8	12.8	13	12.2		18
20	11	11.5	11.1	11.4	11.4	10.8	11.1	11.2	10.3		20
22	9.3	10.2	9.4	10	10	9	9.4	9.8	8.6		22
24	7.9	8.8	8	8.7	9	7.7	8	8.5	7.2		24
26	6.7	7.7	6.8	7.5	7.8	6.5	6.9	7.3	6.1		26
28	5.8	6.7	5.9	6.6	6.9	5.5	5.9	6.4	5.1		28
30	4.9	5.9	5	5.7	6	4.7	5.1	5.5	4.3		30
32			4.3	5	5.3	4	4.4	4.8	3.6		32
34			3.7	4.4	4.7	3.4	3.7	4.2	2.9		34
36						2.8	3.2	3.6	2.4		36
38						2.3	2.7	3.1	1.9		38
40									1.5		40
42									1.1		42
组合 combi nation	111111	011112	111211	012112	011122	211121	121112	111122	222111	组合 combi nation	

m											m
	45 m	45 m	48.7 m	48.7 m	48.7 m	52.4 m	52.4 m	56.1 m	60 m		
9	19.2	19.4									9
10	19.2	19.4	15.8	15.8	16						10
12	18.8	18.8	15.8	15.8	16	12.8	12.8				12
14	18.3	18.5	15.4	15.4	15.4	12.8	12.8	10.7	8.8		14
16	16.2	16.2	14.8	14.8	14.8	12.5	12.6	10.5	8.8		16
18	14.2	14.2	13.5	13.6	13.5	12	12	10.2	8.6		18
20	12.4	12.2	11.6	11.6	11.7	11.2	11.2	9.9	8.5		20
22	10.8	10.8	10.4	10.4	10.4	10	10	9.3	8.2		22
24	9.6	9.6	9.2	9.4	9.4	8.8	9	8	7.6		24
26	8.5	8.5	7.8	8.2	8.2	7.6	7.6	6.9	6.7		26
28	7.4	7.4	6.7	7	7.2	6.6	6.6	5.9	5.8		28
30	6.5	6.4	5.7	6.1	6.3	5.8	5.8	5.1	5		30
32	5.6	5.6	4.9	5.2	5.4	5	5.2	4.4	4.3		32
34	5	4.9	4.1	4.5	4.6	4.2	4.4	3.7	3.6		34
36	4.4	4.2	3.5	3.9	4	3.6	3.7	3.2	3.1		36
38	3.8	3.7	3	3.3	3.5	3.1	3.2	2.7	2.6		38
40	3.2	3.2	2.5	2.9	3	2.6	2.7	2.2	2.1		40
42	2.9	2.8	2.1	2.4	2.7	2.2	2.4	1.8	1.7		42
44	2.5	2.4	1.7	2	2.2	1.8	2	1.4	1.4		44
46			1.3	1.7	1.8	1.4	1.6	1.1	1		46
48						1.1	1.2	0.8			48
组合 combi nation	012222	111222	221122	122122	112222	222122	122222	222222	333333	组合 combi nation	

# 主要技术参数表

## Transportation plan

类别	项目		单位	参数
尺寸参数	外形尺寸(长×宽×高)		mm	13180×2750×4000
	轴距		mm	1600+2475+1650
	轮距(前/后)		mm	2340/2340
	前悬/后悬		mm	3440/2255
	前伸/后伸		mm	1295/465或1235/525
重量参数	行驶状态总质量		kg	48000
	轴荷	一轴	kg	12000
		二轴	kg	12000
		三轴	kg	12000
		四轴	kg	12000
动力参数	上车发动机	型号	--	OM924LA.E3A/1
		额定功率/转速	kw/(r/min)	145/2200
		最大输出扭矩/转速	N.m/(r/min)	750/1200-1600
	下车发动机	型号	--	MC11.43-30
		额定功率/转速	kw/(r/min)	319/1900
		最大输出扭矩/转速	N.m/(r/min)	2100/1200
行驶参数	行驶速度	最高车速	km/h	≥80
		最低稳定车速	km/h	≤3
	转弯直径	最小转弯直径	m	≤18
		臂头最小转弯直径	m	≤22.7
	最小离地间隙		mm	280
	接近角		°	17
	离去角		°	16.5
	制动距离 (制动初速度为)		m	≤10
	最大爬坡能力		%	≥60
	百公里油耗		L	60
	加速行驶机外噪声		dB(A)	≤84
驾驶员耳旁噪声		dB(A)	≤90	

# 主要技术参数表

## Transportation plan

类别	项目		单位	参数	
主要性能参数	最大额定总起重量		t	100*	
	最小工作幅度		m	3	
	转台尾部回转半径	平衡重处	mm	4230	
		副卷处	mm	4510	
	最大起重力矩	基本臂	kN.m	2689	
		中长臂	kN.m	3009	
		最长主臂	kN.m	1923	
		最长主臂+副臂	kN.m	372	
	支腿距离	纵向	m	8.76	
		横向	m	7	
	起升高度	基本臂	m	11.7	
		最长主臂	m	60.6	
		最长(主臂+副臂)	m	88	
起重臂长度	基本臂	m	11.7		
	最长主臂	m	60		
	最长(主臂+副臂)	m	88.2		
副臂安装角		°	0/15/30		
工作速度参数	起重臂起臂时间		s	≤50	
	起重臂全伸时间		s	≤600	
	最大回转速度		r/min	≥1.7	
	支腿收放时间	水平支腿	收	s	≤30
			放	s	≤40
		垂直支腿	收	s	≤30
			放	s	≤40
	起升速度	主起升机构(单绳, 第5层)	空载	m/min	≥130
副起升机构(单绳, 第2层)		空载	m/min	≥97	
噪声	机外辐射		dB ( A )	≤122	
	操纵室内		dB ( A )	≤90	



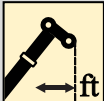
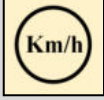












## 符号标识

### Description of symbols


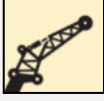

#### 常规标识

##### General symbols

	支腿 Outriggers		车桥 Axle
	工作幅度 Radius		行驶速度 Driving speed
	吊臂仰角 Boom angle		爬坡能力 Grade ability
	吊臂长度 Boom length		轮胎 Tires
	吊钩 Hook block		平衡重 Counterweight
	360°全回转 360° rotation		上车 Superstructure
	卷扬 Winch		底盘 Chassis

#### 起重作业标识

##### Crane specific symbols

	主臂 Boom		副臂 Jib
	独立臂头臂 Independent jib head		

## 注意事项 Notes

1. 表中额定总起重量值，是在平整的坚固地面上本起重机能够保证的最大总起重量，包括吊钩和吊具的重量，所以为了估算重物重量，必须减去上述的装置重量。
2. 表中的工作幅度为起吊重物离地时起重物到起重机会转轴线的水平距离，是包括起重臂变形量在内的实际值，因而起吊前应考虑起重臂变形量。
3. 只允许在5级(瞬时风速14.1m/s，风压125N/m<sup>2</sup>)风以下进行作业。
4. 吊重前操作者必须对物体的重量和工作范围了解后选择合适的作业工况，严禁超出表中的数值。幅度及臂长在相邻两个数值之间时，应依据两个数值中较小值确定起重作业。
5. 应按主臂仰角范围作业，即使是空载，也不应使主臂仰角处于范围外，谨防整机倾翻。
6. 表中的主臂长度应要按照每节臂的伸缩要求进行伸出。

1. The total rated loads given in the rated load charts are the maximum lifting capacity when the crane is set up on firm and level ground, which includes the weight of the hook block and slings. The weight of above-mentioned devices should be deducted from the rated lifting load.
2. The working radius shown in the rated load charts is the radius when the load is lifted off the ground, and it is the actual value including loaded boom deflection. Take boom deflection into consideration before beginning a lifting operation.
3. A lifting operation is permissible only when the wind force is below grade 5 (instantaneous wind speed is 14.1 m/s, wind pressure is 125 N/m<sup>2</sup>).
4. Before beginning lifting operation, the operator should know the weight of the load to be lifted and its working range, and then select proper working conditions. Never operate the crane beyond the limit shown in the chart. Use the lower value from the chart when the boom length or working radius is between the range of values.
5. Observe the boom angle limit. Never operate the crane with the boom angle beyond the recommended limit even if a load is not being carried. Otherwise, the crane will tip.
6. The boom should be extended according to the telescoping code shown by digits, which means the percentage of boom sections extended.



地址：中国江苏徐州市铜山路165号

Add : No.165 Tongshan Road Xuzhou Jiangsu China

电话(Tel) : 0516-83462242/83462350

质量监督电话(Quality Inquiry Tel) : 0516-87888268

备件电话(Spare Parts Tel) : 0516-83461542

邮编(Post Code) : 221004

网址(Web) : www.xcmg.com/qizhongji

服务热线 Service Tel

400-110-9999

400-001-5678



本印刷品不属于合同。出于产品不断改进的需要，我们保留对产品型号、参数、配置进行变更的权利，恕不另行通知。图片仅供参考，具体产品以实物为准。图片中产品可能并非标准配置，部分部件可能需要另行购置。办理牌照和上路行驶需遵守当地法规。

This print does not belong to the contract. We reserve the right to modify the design (such as product model, parameters and configuration) without notice for improvement. The pictures are just for reference. The product in the picture may not be standard configuration. Some parts need to be purchased separately. Conform to the local laws for license application and road traveling.