

# XCA60\_M 全地面起重机 / All Terrain Crane

## 技术规格书

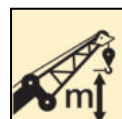
Basic technical specification



60 t



48 m



63 m

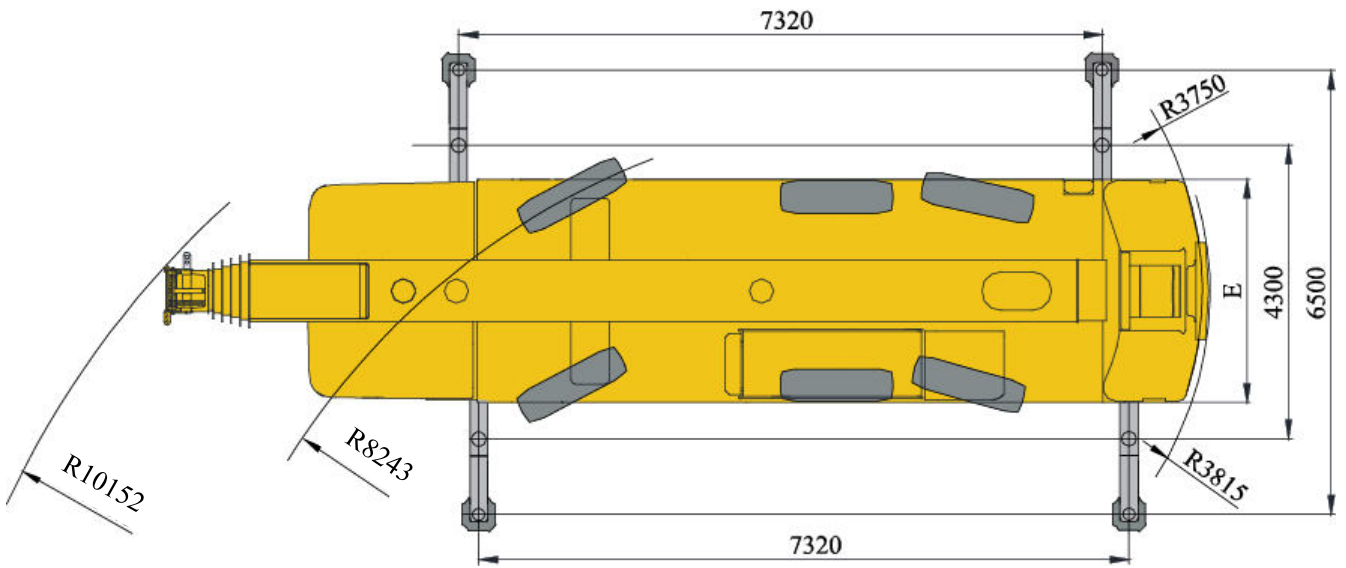
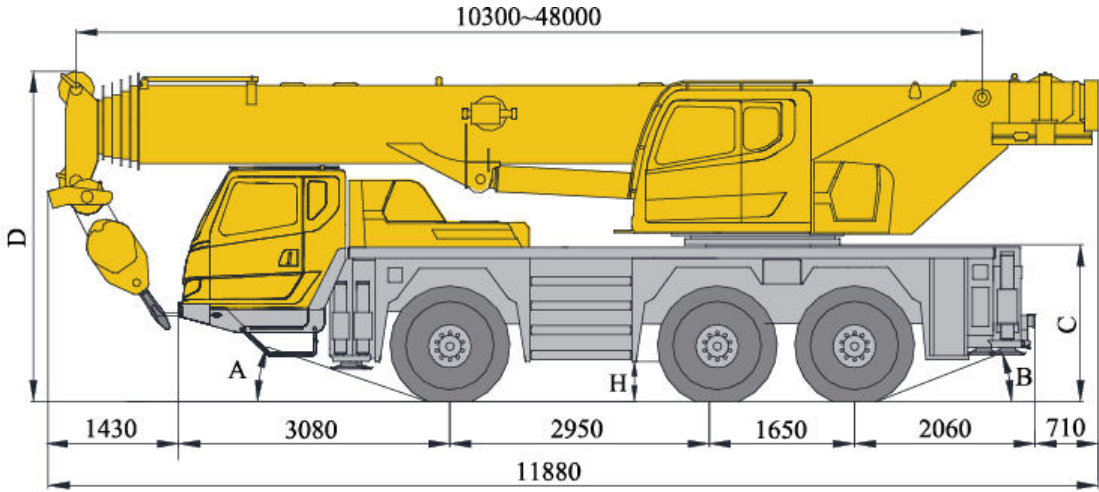



# 目录

## Contents

<b>目录</b> <b>Contents</b>	
尺寸参数 Dimensions	4
技术规格 Technical specifications	5-10
重量/作业速度 Weight / Working speeds	11
平衡重 Counterweight	12
运输部件尺寸 Transportation components dimension	13
臂架组合方案 Boom / Jib combinations	14-15
主臂 Telescopic Boom	16-26
副臂 Jib	27-31
符号标识 Symbol glossary	32
主要技术参数 Main technical data	33-34
注意事项 Notes	35


# 尺寸参数 Dimensions



	A	B	C	D	E	H
385/95 R 25 ( 14.00 R 25 )	19°	21°	1750mm	3755mm	2550mm	330mm
445/95 R 25 ( 16.00 R 25 )	20°	23°	1800mm	3805mm	2550mm	380mm
525/80 R 25 ( 20.5 R 25 )	20°	23°	1800mm	3805mm	2700mm	380mm

# 技术规格


## Technical specifications

 底盘	配置	
<b>车架</b>	徐工设计、制造，车架采用倒梯形截面车架结构，高强度钢材制造。	●
<b>支腿</b>	H形支腿，水平支腿为单级伸缩，带推拉式支脚盘，两种伸缩作业位置（全伸、半伸），满足多种作业工况需求。支腿操纵面板CAN总线控制，位于底盘两侧。	●
<b>发动机</b>	六缸、柴油、中国重汽MC11.35-30， 额定功率/转速：260kw/1900rpm， 最大输出扭矩/转速： 1750N.m/1000-1400rpm。 排放标准：国三。 燃油箱容积：260L。	●
<b>变速箱</b>	双特自动挡变速箱。	●
<b>车桥</b>	高强度断开式独立悬挂车桥，三桥驱动：6×6×6。	●
<b>悬挂</b>	采用先进的独立悬架技术，左右轮胎相互独立运动，提升驾乘平顺性，悬架采用油缸减振+蓄能器缓冲，主减速器固定于车架，可随车架上下升降悬挂油缸行程为±110mm。	●

<b>轮胎</b>	6个轮胎，1个备胎。	385/95R25 (14.00R25)	●
		445/95R25 (16.00R25)	○
		525/80R25 (20.5R25)	○
<b>制动</b>	行车制动：双回路气压制动，作用于所有车轮。 驻车制动：弹簧储能制动，作用于1、2、3轴车轮。 辅助制动：发动机缓速制动。		●
<b>转向</b>	1轴为机械转向，2、3轴为电液比例转向。		●
<b>驾驶室</b>	新型钢结构豪华全宽驾驶室，采用悬浮式连接结构，后部装有减震器。配备电动升降器的安全玻璃、可调式座椅、电动调节后视镜、可调节高度及角度方向盘，大屏幕彩色液晶显示器等。新型组合式中控台布局安全合理，采用圆弧造型，体现人性化的设计。标配收音机、冷暖空调。		●
<b>电气系统</b>	直流24伏特，2个12伏特电池组串联。		●
<b>冷启动装置</b>	用于发动机预热，适应低温环境。		○
<b>辅助制动</b>	电涡流缓速制动		○
<b>辅助装置</b>	驾驶室旋转报警灯		○

# 技术规格


## Technical specifications

	上车	配置
<b>结构</b>	徐工设计、制造，高强度钢材制造	●
<b>液压系统</b>	负载敏感柱塞泵和齿轮泵，用于主副起升、变幅、伸缩、回转、辅助系统；负荷敏感式比例多路换向阀，风冷式液压油散热器。	●
<b>操纵方式</b>	先导电比例操纵，采用分布式总线控制技术，除常规控制功能外，还具有系统实时监测、故障自动诊断、智能臂架控制、功能自适应控制、单缸插销控制起重机的全部动作。	●
<b>起升机构</b>	液压马达驱动，内置式行星齿轮减速机和常闭式制动器，主卷专用防乱绳卷筒，抗缠绕钢丝绳。	●
	主、副起升机构独立操作。副卷	●
<b>回转机构</b>	单排四点接触球外齿式回转支承，由液压马达驱动，内置行星齿轮减速器和常闭式制动器，可连续回转360°，具有动力控制或自由回转的功能，可无级调速。	●
<b>操纵室</b>	按人机工程学设计，安全舒适，装有安全玻璃和顶部保护栏。前窗装有遮阳板，推拉式车门，可调式座椅。上车操纵室可向后倾斜20°。配置冷暖空调。	●

<b>安全装置</b>	液压平衡阀、液压溢流阀、液压双向锁；力矩限制器；显示器、中心控制器、长度/角度传感器、油压传感器、操纵杆弹簧式回中系统；三圈保护器，防止钢丝绳过放；臂头设置高度限位，装置，防止钢丝绳过卷；风速仪，检测高空风速。	●
<b>力矩限制器</b>	当实际力矩接近过载时，发出听觉视觉警报，并在过载之前自动停止危险动作。具有超载记忆功能（黑匣子）和故障自诊断功能。	●
<b>组合配重</b>	总重12t，有0t、2.1t、2.7t、3.4t、4.5t、7.6t和12t七种组合方式。	●
<b>电气系统</b>	直流24伏特。	●
<b>集中润滑系统</b>	电脑编程控制，集中润滑点为回转支承、主副起升机构轴承座、变幅油缸上下铰点、操纵室翻转油缸铰点、起重臂后铰点。	●
<b>吊钩</b>	5t吊钩	●
	15吨吊钩	○
	35t吊钩	●
	60t吊钩	●
<b>无线遥控</b>	远程无线遥控装置。	○

## 技术规格

### Technical specifications

 臂架系统	配置
<b>主臂</b> 6节，“U”形截面的筒形焊接结构。单缸插销伸缩机构，有46%、92%和全伸模式可供选择。 主臂长度：10.3m~48m。	●
<b>副臂</b> 桁架式焊接结构，具有0°、15°、30°三种固定副臂安装角。 固定副臂长度：9.2m~16m。	●
<b>独立臂头</b> 长2.5米，安装在主臂顶端用于起重作业。	○
<b>臂端单滑轮</b> 单滑轮，安装在主臂顶端用于单股钢丝绳起重作业，起重性能与主臂相同，但最大起重量不超过5t。	●

产品各部件明细如上所述，具体部件明细请参照产品报价单


符号说明：

- —— 表示标准配置；
- —— 表示选装配置。



# 技术规格


## Technical specifications

 Chassis		
<b>Frame</b>	Designed and manufactured by XCMG, made of high strength steel with inverted trapezium cross-section.	●
<b>Outrigger</b>	H-type outrigger, outrigger beam is one-stage telescoping with push-pull outrigger float and two telescoping working position (fully-extended and half-extended) to satisfy various working condition requirements. Outrigger control panel is controlled by CAN bus located on the sides of chassis.	●
<b>Engine</b>	SINOTRUK MC11.35-30,6cylinders diesel. Rated power/rpm: 260 kw /1900 rpm Max. output torque/rpm: 1750N.m /1000-1400 rpm. Emission standard: China III. Fuel tank capacity: 260 L.	●
<b>Transmission</b>	Xi'an FC automatic transmission.	●
<b>Axles</b>	High strength divided axles with independent suspension. Three axles for driving: 6×6×6.	●
<b>Suspension</b>	With advanced independent suspension technology, the right and left tires can move independently to improve the drive smooth-ness. The suspension is equipped with effective damped cylinder and accumulator buffer ; fixed on the frame, the main reducer can rise and fall with the frame to greatly improve the passing ability of vehicle. The stroke of suspension cylinder : -110mm ~ +110mm.	●

<b>Tires</b>		385/95R25 ( 14.00R25 )	●
	6 tires and 1 spare tire.	445/95R25 (16.00R25)	○
		525/80R25 (20.5R25)	○
<b>Brakes</b>	Service brake: double-circuit air pressure brake, acting on all wheels. Parking brake: spring-loaded brake, acting on the wheels of axles 1, 2 and 3. Auxiliary brake: engine retarded brake.		●
<b>Steering</b>	Axle 1 mechanically steering and axles 2, 3 electric-hydraulic proportional steering.		●
<b>Driver's cab</b>	New type steel structure full dimension cab with suspension connecting structure, and there is shock absorb fitted at the rear of the cab, equipped with adjustable seats, safety glass of electrically operated door window lift , electric-adjustable mirrors, steering wheel adjustable in height and angle, large screen liquid crystal display.New type of combined control panel is reasonably and ergonomically arranged in arch shape. Heater, air conditioner and radio receiver are standard.		●
<b>Electrical System</b>	DC 24 volts is in series with two 12-volt battery packs.		●
<b>Cold weather starting device</b>	It is used for engine preheating in order to adapt to the low temperature environment.		○
<b>Auxiliary brake</b>	Eddy current retarding brake		○
<b>Auxiliary devices</b>	beacon lamp		○

# 技术规格

## Technical specifications


	Superstructure		
<b>Frame</b>	Designed and manufactured by XCMG, made of high-strength steel.		●
<b>Hydraulic system</b>	The load-sensing plunger pump and gear pump driven are used to control hoisting, elevating, telescoping, slewing and auxiliary system. Load-sensing proportional multi-way valve is equipped. Air-cooled hydraulic radiator is also applied.		●
<b>Operating mode</b>	Pilot electric proportional control is adopted with distributed CAN bus control technology. Apart from the normal control functions, it also has the functions of real time monitoring, automatic fault diagnosis, intelligent boom control, function self-adaptability and single cylinder pinning control.		●
<b>Winch system</b>	Hydraulic motor with planetary gear reducer and constant-closed brake, specific anti-disorder rope winding drum, anti-coiling wire rope.	Main winch	●
	The main winch and auxiliary winch can be individually operated.	Auxiliary winch	●
<b>Slewing system</b>	Single-row four-point ball contact external tooth slewing ring and driven by a hydraulic motor, with a planetary gear reducer and a normally closed brake equipped, for 360° continuous rotation. Power control and free slewing function as well as stepless speed regulation are available.		●
<b>Operator's cab</b>	The cab is ergonomically designed for safety and comfort. It is equipped with safety glass and protective grilles. Windshield sun shade, a sliding door and an adjustable seat are available. The cab can be tilted up to 20°. Heating & air conditioning are available.		●

<b>Safety devices</b>	Hydraulic balance valve, hydraulic relief valve, hydraulic two-way valve, LMI, display, central controller, length/angle sensor, oil pressure sensor and spring centering system for control levers. Lowering limiter for preventing wire rope from over-releasing. Anti-two block at boom head for preventing wire rope from over-winding. Anemometer for measuring the wind velocity.	●
<b>LMI</b>	The safety protection device is installed in operator's cab. When actual moment approaches overload value, it may send out visual alarm, and automatically stop dangerous movements before overloading. Overload memory function (black box) and fault self-diagnosis function are available.	●
<b>Combined counterweight</b>	Total weight is 12t. 7 counterweight combinations of 0t, 2.1t, 2.7t, 3.4t, 4.5t, 7.6t and 12t are available.	●
<b>Electrical System</b>	24 V DC	●
<b>Centralized lubrication system</b>	Controlled by computer program; lubrication points are at slewing ring, bearing pedestals of main winch and auxiliary winch, upper and lower pivots of elevating cylinder, pivot of tilt cylinder and rear pivot of boom.	●
<b>Hook block</b>	5t Hook block	●
	15t Hook block	○
	35t Hook block	●
	60t Hook block	●
<b>Wireless remote control</b>	Wireless remote control device	○



# 技术规格

## Technical specifications

	Boom system	
<b>Boom</b>	6-section, U-shape cross section, welding structure. Single-cylinder pinning interlocked telescoping system. 46%, 92% and 100% telescoping pattern are available. Boom length:10.3m ~ 48m.	●
<b>Fixed jib</b>	Lattice welding structure, with 0° , 15° and 30° jib offset angles available. Jib length: 9.2m~16m.	●
<b>Independent jib head</b>	2.5 m, may be installed on the tip of boom for lifting operations.	○
<b>Single top</b>	Fitted at boom head, used for single line operation. Its lifting performance is the same as that for boom, but the maximum lifting load does not exceed 5000kg.	●

Product parts list is as mentioned above. Please refer to the product quotation for specific parts.

Symbol explanation:

- —it means the standard configuration;
- —it means the optional configuration.

## 重量 Weight






车桥 Axle	1	2	3	总重量 Total weight
t	12	12	12	36








吊钩 Hook	倍率 No. of lines	吊钩重量 Weight kg	备注 Remarks
60 t	12	560	单钩 Single hook
35 t	7	305	单钩 Single hook
15 t	3	235	单钩 Single hook 选装 optional
5 t	1	100	单钩 Single hook

## 作业速度 Working speeds

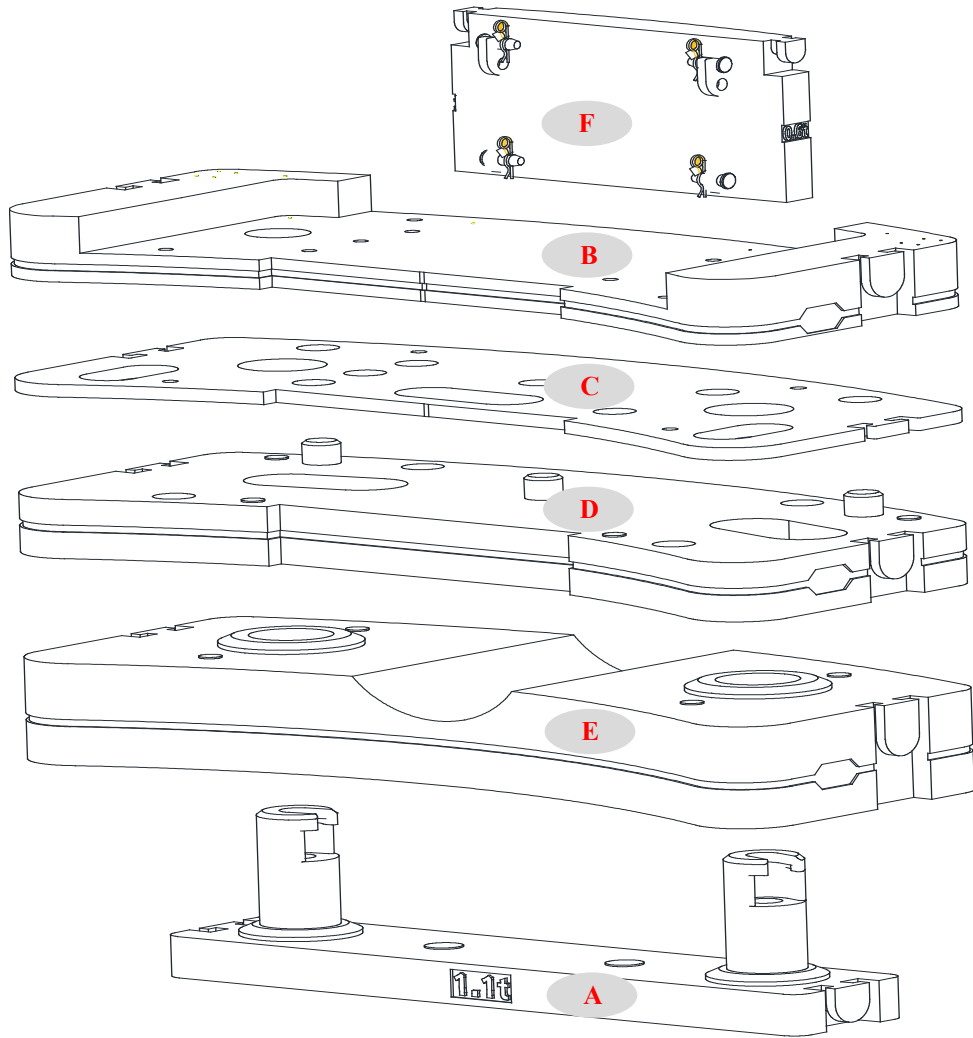


		
385/95 R 25 ( 14.00 R 25 )	3~85	70%
445/95 R 25 ( 16.00 R 25 )	3~85	63%
525/80 R 25 ( 20.5 R 25 )	3~85	63%



作业机构 Drive	作业速度 Working speed	最大单绳拉力 Max. single line pull	钢丝绳直径/长度 Rope diameter/ length
	0-135 m/min, 单绳, 第4层, 空载 m/min, single line, 4th layer, no load	50KN	18 mm/208 m
	0-135 m/min, 单绳, 第4层, 空载 m/min, single line, 4th layer, no load	50KN	18 mm/140 m
	0-1.5 r/min		
	从-1°抬起至81°约38s Approx. 38s for boom elevation from -1° to 81°		
	从10.3m伸出至48m约310s Approx. 310s for boom extension from 10.3m to 48m		

# 平衡重 Counterweight



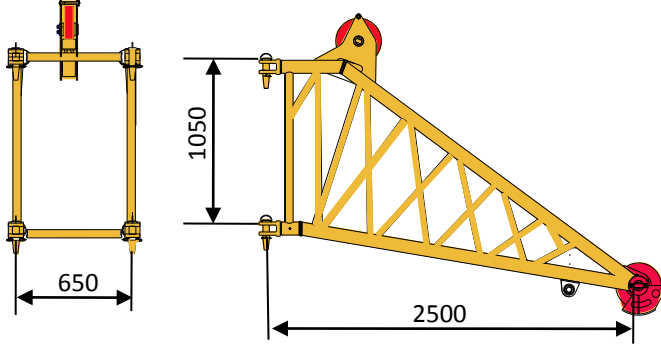
平衡重 Counterweight	A	B	C	D	E	F
尺寸 (长×宽×高) m Size (L×W×H) m	2.11×0.44 ×0.587	2.5×1.139 ×0.235	2.5×1.139 ×0.045	2.5×1.139 ×0.212	2.5×1.139 ×0.399	1.1×0.57 ×0.247
重量 t Weight t	1.1	2.1	0.7	3.1	4.4	0.6

工况模式 Working mode	12t	7.6t	4.5t	3.4 t	2.7t	2.1t
组合形式 Combinations	A+B+C+D+E+F	A+B+C+D+F	A+B+C+F	B+C+F	B+F	B

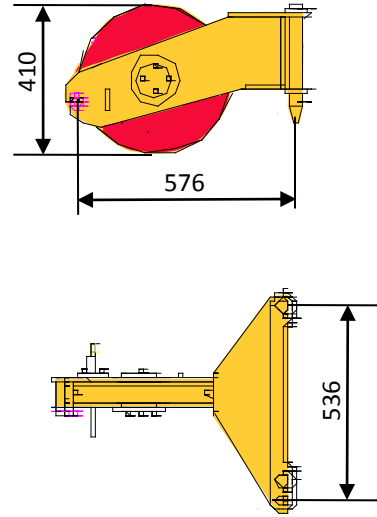
# 运输部件尺寸

## Transportation components dimension

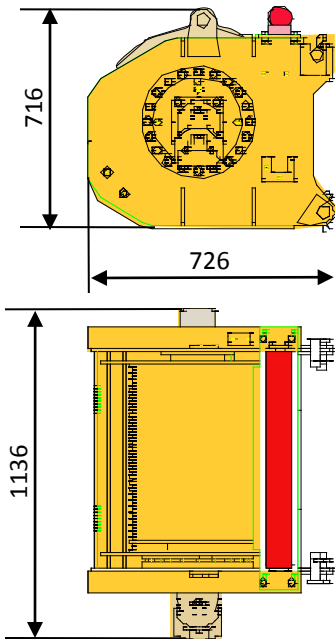
独立臂头 ( 选装 ) 435kg  
Independent jib head ( optional )



臂端单滑轮 46kg  
Single top



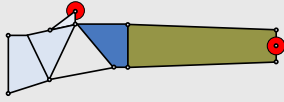
副起升机构 ( 含钢丝绳 ) 648kg  
Auxiliary winch ( rope included )



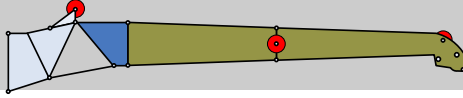
# 臂架组合方案

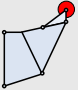


## Boom / Jib combinations

副臂 - 9.2m  
Jib - 9.2m



副臂 - 16m  
Jib - 16m



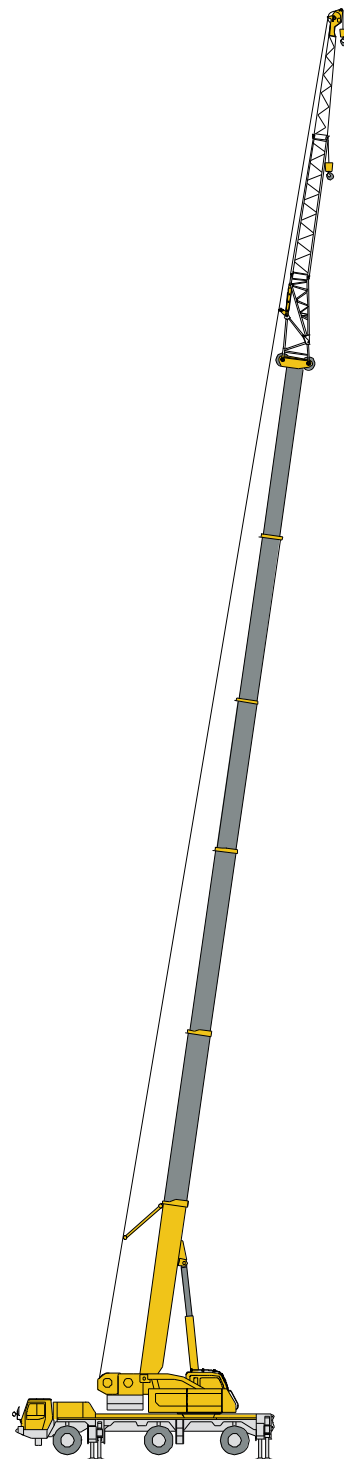
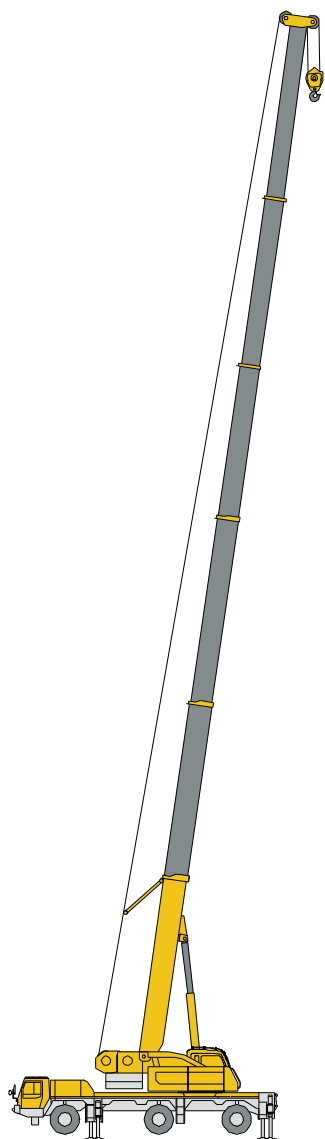
部件 Component	结构形式 Structure	尺寸 (长×宽×高) mm Size (L×W×H) mm	重量 kg Weight kg
连接架 Connection bracket		1100×650×1050	135.6
一节副臂总成 First jib section assembly		8760×650×580	485.4
二节副臂总成 Second jib section assembly		6300×250×360	240

# 臂架组合方案

## Boom / Jib combinations

T 主臂

J 副臂



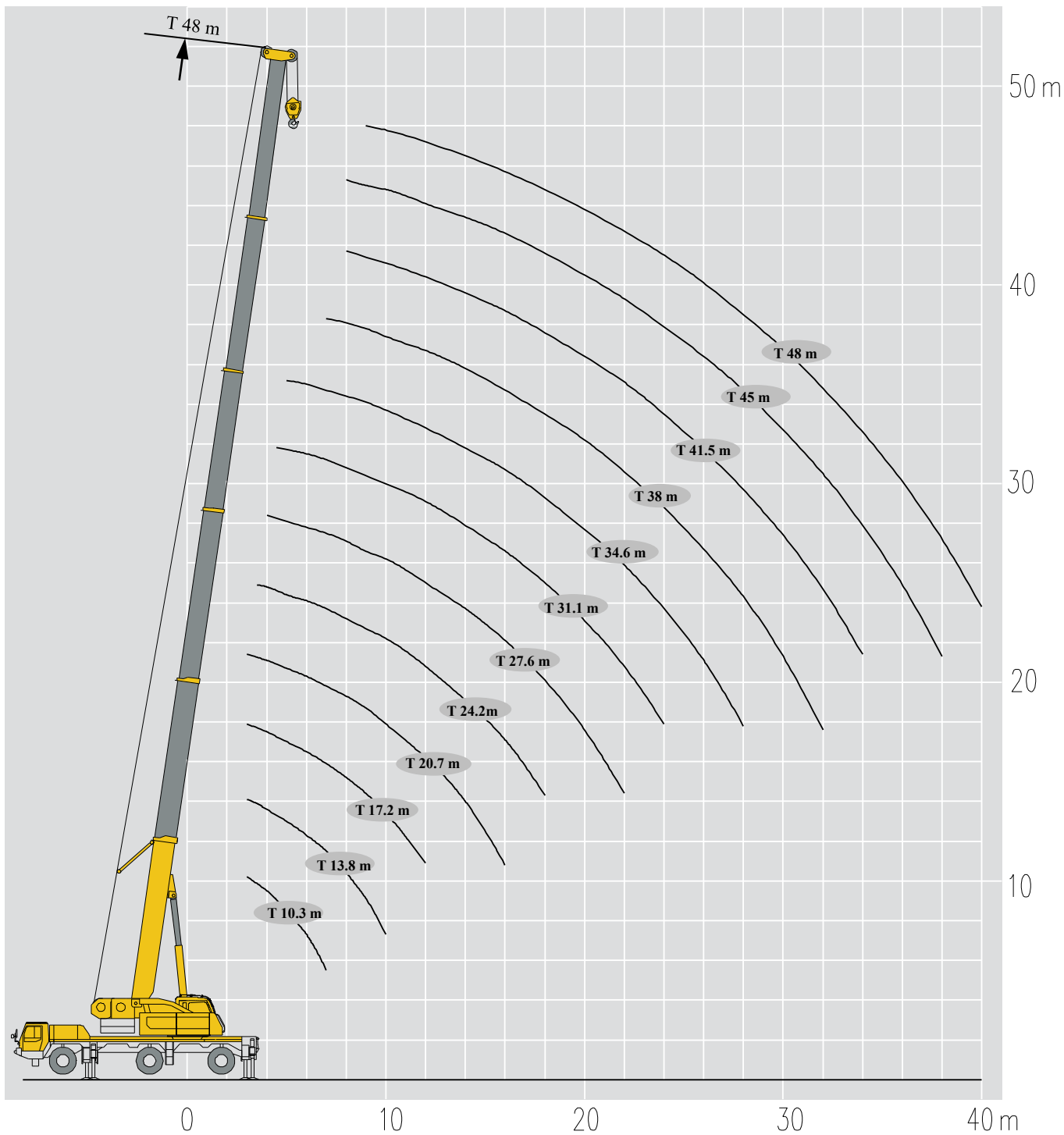
主臂  
Telescopic boom

副臂  
Jib

T : 10.3~48 m

T : 41.6~48 m  
J : 9.2~16 m

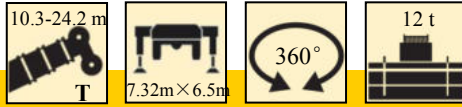




# 起重性能表

## Lifting capacities

T 10.3~24.2m



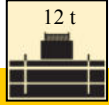
← m	10.3m*	10.3 m	13.8 m	13.8 m	13.8 m	17.2 m	17.2 m	→ m
2.1	60							2.1
3	54.6	42.5	42.3	41.5	40.5	41.5	40.5	3
3.5	49.9	42.5	42.2	41.0	40.0	41.0	40.0	3.5
4	44.5	40.7	41.4	40.2	39.0	38.5	37.9	4
4.5	39.8	37.5	38.0	36.9	35.0	35.0	34.9	4.5
5	36.4	34.5	35.0	35.2	33.0	33.0	33.3	5
6	31.6	29.0	29.8	30.0	29.0	29.8	29.8	6
7	26.5	24.3	24.5	24.8	25.3	26.0	25.5	7
8			20.5	21.0	21.5	21.6	22.5	8
9			17.5	18.0	18.3	17.7	18.5	9
10			15.0	15.4	15.7	14.7	15.8	10
12						10.8	11.5	12
组合 combi nation	正后方作业	00000	01000	00100	00010	11000	01100	组合 combi nation

← m	17.2 m	20.7 m	20.7 m	20.7 m	24.2 m	24.2 m	24.2 m	→ m
3	28.1	35.0	27.6	23.9				3
3.5	26.4	35.0	25.8	23.0	27.4	30.0	23.7	3.5
4	24.8	35.0	23.9	22.1	24.5	30.0	22.8	4
4.5	23.4	33.5	21.5	21.2	22.4	29.0	22.0	4.5
5	22.1	31.5	20.3	20.3	21.4	28.0	21.2	5
6	19.9	28.5	18.2	19.1	19.4	27.2	19.9	6
7	18.1	25.5	16.5	17.8	17.8	24.7	18.7	7
8	16.6	21.5	15.1	16.3	16.3	22.0	17.7	8
9	15.4	18.5	13.8	15.1	14.9	18.5	16.3	9
10	14.4	15.9	12.7	14.0	13.8	15.7	15.1	10
12	12.1	11.1	11.0	12.2	11.2	11.5	12.2	12
14		8.5	8.9	9.9	8.6	9.0	9.7	14
16		6.7	7.1	8.0	6.8	7.1	8.1	16
18					5.5	5.8	6.7	18
组合 combi nation	00110	11100	02100	00111	12100	11110	01111	组合 combi nation

# 起重性能表

## Lifting capacities

T 27.6~48m



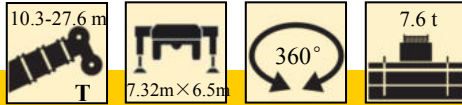
m	Lifting Capacity (t)								m
	27.6 m	27.6 m	27.6 m	31.1 m	31.1 m	31.1 m	34.6 m	34.6 m	
4	24.5	25.0	18.2						4
4.5	24.0	25.0	17.3	20.0	20.0	15.0			4.5
5	23.5	25.0	16.6	20.0	20.0	14.7	15.0	15.0	5
6	22.4	25.0	15.2	19.9	18.4	13.5	15.0	15.0	6
7	20.3	24.2	14.0	18.7	17.0	12.5	15.0	14.4	7
8	18.5	21.0	13.0	17.7	15.8	11.6	14.8	13.4	8
9	17.0	18.0	12.2	15.9	14.7	10.8	14.2	12.6	9
10	15.2	16.0	11.5	14.6	13.7	10.1	13.3	11.8	10
12	11.3	12.0	10.7	11.7	11.9	8.9	11.1	10.4	12
14	8.7	9.4	9.7	9.1	9.4	7.9	9.0	9.3	14
16	6.9	7.5	8.1	7.3	7.7	7.1	7.2	7.6	16
18	5.5	6.2	6.8	5.9	6.1	6.6	5.9	6.5	18
20	4.5	5.1	5.8	4.9	5.1	5.9	4.8	5.5	20
22	3.7	4.3	5.0	4.0	4.3	5.1	4.0	4.3	22
24				3.4	3.6	4.4	3.4	3.7	24
26							2.8	3.1	26
28							2.3	2.6	28
组合 combi nation	21110	11111	01112	21111	12111	01122	22111	12211	组合 combi nation

m	Lifting Capacity (t)								m
	34.6 m	38 m	38 m	38 m	41.5 m	41.5 m	45 m	48 m	
5	13.1								5
6	12.5								6
7	11.8	12.8	12.2	11.5					7
8	11.1	12.6	11.6	10.9	10.8	10.0	8.7		8
9	10.3	12.2	10.9	10.4	10.4	9.4	8.7	7.1	9
10	9.4	11.5	10.3	9.8	9.8	9.0	8.5	7.1	10
12	8.1	10.2	9.0	8.8	9.0	8.0	7.6	6.9	12
14	7.0	8.8	7.7	7.8	7.8	6.8	6.7	5.9	14
16	6.2	7.6	6.7	6.8	6.8	5.9	6.3	5.7	16
18	5.6	6.0	5.9	6.0	6.2	5.4	5.5	5.0	18
20	5.0	4.9	5.3	5.5	5.4	4.7	5.0	4.4	20
22	4.9	4.1	4.5	4.8	4.6	4.2	4.4	4.0	22
24	4.2	3.4	3.8	4.1	3.6	3.9	3.6	3.6	24
26	3.7	2.9	3.3	3.5	3.0	3.5	3.2	3.0	26
28	3.3	2.4	2.8	3.0	2.6	3.0	2.7	2.6	28
30		2.0	2.4	2.6	2.2	2.6	2.4	2.2	30
32		1.7	2.0	2.3	1.8	2.2	2.0	2.0	32
34					1.5	1.9	1.7	1.7	34
36							1.5	1.5	36
38							1.2	1.2	38
40								1.0	40
组合 combi nation	01222	22211	12221	11222	22221	12222	22222	33333	组合 combi nation

# 起重性能表

## Lifting capacities

T 10.3~27.6m



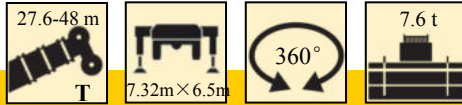
m	10.3 m							m
	10.3 m	13.8 m	13.8 m	13.8 m	17.2 m	17.2 m	17.2 m	
3	42.5	42.3	41.5	40.5	41.5	40.5	28.1	3
3.5	42.5	42.2	41.0	40.0	41.0	40.0	26.4	3.5
4	40.7	41.4	40.2	39.0	38.5	37.9	24.8	4
4.5	37.5	38.0	36.9	35.0	35.0	34.9	23.4	4.5
5	34.5	35.0	35.2	33.0	33.0	33.3	22.1	5
6	29.0	29.8	30.0	29.0	29.6	29.8	19.9	6
7	22.3	22.5	23.0	23.4	22.0	22.9	18.1	7
8		17.7	18.1	18.4	17.2	18.1	16.6	8
9		14.3	14.7	15.1	14.0	14.7	15.3	9
10		12.0	12.4	12.6	11.6	12.4	12.8	10
12					8.4	9.0	9.5	12
组合 combi nation	00000	01000	00100	00010	11000	01100	00110	组合 combi nation

m	20.7 m							m
	20.7 m	20.7 m	20.7 m	24.2 m	24.2 m	24.2 m	27.6 m	
3	35.0	27.6	23.9					3
3.5	35.0	25.8	23.0	27.4	30.0	23.7		3.5
4	35.0	23.9	22.1	24.5	30.0	22.8	24.5	4
4.5	33.5	21.5	21.2	22.4	29.0	22.0	24.0	4.5
5	31.5	20.3	20.3	21.4	28.0	21.2	23.5	5
6	28.5	18.2	19.1	19.4	27.2	19.9	22.4	6
7	22.4	16.5	17.8	17.8	22.9	18.7	20.3	7
8	17.6	15.1	16.3	16.3	18.1	17.7	17.8	8
9	14.3	13.8	15.1	14.3	14.7	15.7	14.4	9
10	11.9	12.4	13.4	12.0	12.4	13.2	12.1	10
12	8.6	9.0	10.0	8.7	9.0	9.9	8.7	12
14	6.6	6.9	7.8	6.7	6.9	7.7	6.7	14
16	5.0	5.4	6.3	5.1	5.4	6.2	5.2	16
18				4.0	4.4	5.0	4.1	18
20							3.2	20
22							2.6	22
组合 combi nation	11100	02100	00111	12100	11110	01111	21110	组合 combi nation

# 起重性能表

## Lifting capacities

T 27.6~48m



m	27.6 m		31.1 m		34.6 m		m	
	27.6 m	18.2	31.1 m	31.1 m	31.1 m	34.6 m		
4	25.0	18.2					4	
4.5	25.0	17.3	20.0	20.0	15.0		4.5	
5	25.0	16.6	20.0	20.0	14.7	15.0	5	
6	25.0	15.2	19.9	18.4	13.5	15.0	6	
7	23.5	14.0	18.7	17.0	12.5	15.0	7	
8	18.6	13.0	17.7	15.8	11.6	14.8	8	
9	15.2	12.2	14.9	14.7	10.8	14.2	9	
10	12.8	11.5	12.4	12.7	10.1	12.4	10	
12	9.5	10.2	9.2	9.4	8.9	9.1	12	
14	7.3	8.0	7.0	7.3	7.9	7.0	14	
16	5.8	6.5	5.5	5.8	6.6	5.5	16	
18	4.8	5.3	4.5	4.7	5.4	4.5	18	
20	3.8	4.5	3.6	3.8	4.6	3.5	20	
22	3.1	3.7	2.9	3.0	3.9	2.9	22	
24			2.3	2.6	3.3	2.3	24	
26						1.8	26	
28						1.4	28	
组合 combi nation	11111	01112	21111	12111	01122	22111	12211	组合 combi nation

m	38 m		41.5 m		45 m		m		
	34.6 m	38 m	38 m	38 m	41.5 m	41.5 m			
5	13.1						5		
6	12.5						6		
7	11.8	12.8	12.2	11.5			7		
8	11.1	12.6	11.6	10.9	10.8	10.0	8		
9	10.3	12.2	10.9	10.4	10.4	9.4	8.7	7.1	
10	9.4	11.5	10.3	9.8	9.8	9.0	8.5	7.1	
12	8.1	9.2	9.0	8.8	9.0	8.0	7.6	6.9	
14	7.0	7.1	7.5	7.8	7.3	6.8	6.7	5.9	
16	6.2	5.6	6.0	6.3	5.8	5.9	6.0	5.7	
18	5.4	4.6	4.8	5.1	4.7	5.1	4.8	4.8	
20	4.6	3.6	4.0	4.3	3.8	4.2	4.0	4.0	
22	3.9	2.9	3.3	3.6	3.1	3.5	3.3	3.3	
24	3.2	2.4	2.8	3.0	2.6	2.9	2.8	2.8	
26	2.8	1.9	2.3	2.6	2.1	2.5	2.3	2.3	
28	2.4	1.5	1.9	2.1	1.7	2.1	1.9	1.9	
30		1.2	1.5	1.8	1.3	1.7	1.5	1.5	
32			1.2	1.5	1.0	1.4	1.2	1.2	
34						1.2	1.0	1.0	
组合 combi nation	01222	22211	12221	11222	22221	12222	22222	33333	组合 combi nation

# 起重性能表

## Lifting capacities

T 10.3~27.6m



Height (m)	10.3 m	13.8 m	13.8 m	13.8 m	17.2 m	17.2 m	17.2 m	Height (m)
3	42.5	42.3	41.5	40.5	41.5	40.5	28.1	3
3.5	42.5	42.2	41.0	40.0	41.0	40.0	26.4	3.5
4	40.7	41.4	40.2	39.0	38.5	37.9	24.8	4
4.5	37.5	38.0	36.9	35.0	35.0	34.9	23.4	4.5
5	34.5	34.9	35.2	33.0	33.0	33.3	22.1	5
6	23.3	23.5	23.9	24.4	22.9	23.9	19.9	6
7	17.2	17.3	17.8	18.1	16.8	17.8	18.1	7
8		13.5	13.9	14.3	13.0	13.9	14.4	8
9		10.8	11.2	11.6	10.5	11.2	11.8	9
10		8.9	9.3	9.6	8.6	9.3	9.8	10
12					5.8	6.6	7.0	12
组合 combi nation	00000	01000	00100	00010	11000	01100	00110	组合 combi nation

Height (m)	20.7 m	20.7 m	20.7 m	24.2 m	24.2 m	24.2 m	27.6 m	Height (m)
3	35.0	27.6	23.9					3
3.5	35.0	25.8	23.0	27.4	30.0	23.7		3.5
4	35.0	23.9	22.1	24.5	28.0	22.8	24.5	4
4.5	33.5	21.5	21.2	22.4	27.0	22.0	24.0	4.5
5	31.5	20.3	20.3	21.4	25.0	21.2	23.5	5
6	23.4	18.2	19.1	19.4	23.9	19.9	22.4	6
7	17.2	16.5	17.8	17.3	17.8	18.7	17.4	7
8	13.4	13.9	15.0	13.5	13.9	14.8	13.6	8
9	10.7	11.2	12.3	10.8	11.2	12.2	10.9	9
10	8.8	9.2	10.3	8.9	9.3	10.2	9.0	10
12	6.1	6.6	7.5	6.2	6.6	7.4	6.3	12
14	4.4	4.8	5.7	4.5	4.8	5.6	4.5	14
16	3.1	3.5	4.5	3.2	3.5	4.3	3.3	16
18				2.4	2.7	3.4	2.4	18
20							1.7	20
22							1.2	22
组合 combi nation	11100	02100	00111	12100	11110	01111	21110	组合 combi nation



# 起重性能表

## Lifting capacities

T 27.6~48m



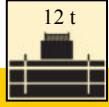
m	27.6 m							m
	27.6 m	27.6 m	31.1 m	31.1 m	31.1 m	34.6 m	34.6 m	
4	25.0	18.2						4
4.5	24.0	17.3	20.0	20.0	15.0			4.5
5	22.0	16.6	20.0	20.0	14.7	15.0	15.0	5
6	20.0	15.2	19.9	18.4	13.5	15.0	15.0	6
7	18.3	14.0	18.0	17.0	12.5	15.0	14.4	7
8	14.3	13.0	14.1	14.3	11.6	14.0	13.4	8
9	11.7	12.2	11.4	11.6	10.8	11.3	11.7	9
10	9.7	10.5	9.4	9.7	10.1	9.4	9.8	10
12	7.0	7.7	6.7	6.9	7.9	6.7	7.0	12
14	5.2	5.9	4.8	5.1	6.0	4.8	5.2	14
16	3.9	4.6	3.7	3.9	4.8	3.6	4.0	16
18	3.0	3.7	2.8	2.9	3.8	2.8	3.0	18
20	2.4	2.9	2.1	2.3	3.1	2.1	2.4	20
22	1.8	2.4	1.5	1.8	2.6	1.5	1.8	22
24			1.1	1.3	2.1	1.1	1.4	24
26							1.0	26
组合 combi nation	11111	01112	21111	12111	01122	22111	12211	组合 combi nation

m	34.6 m								m
	34.6 m	38 m	38 m	38 m	41.5 m	41.5 m	45 m	48 m	
5	13.1								5
6	12.5								6
7	11.8	12.8	12.2	11.5					7
8	11.1	12.6	11.6	10.9	10.8	10.0	8.7		8
9	10.3	11.4	10.9	10.4	10.4	9.4	8.7	7.1	9
10	9.4	9.5	10.0	9.8	9.7	9.0	8.5	7.1	10
12	7.9	6.7	7.2	7.5	6.9	7.4	7.2	6.9	12
14	6.0	4.9	5.4	5.7	5.1	5.6	5.3	5.4	14
16	4.8	3.7	4.1	4.5	3.9	4.4	4.1	4.1	16
18	3.8	2.9	3.2	3.5	3.0	3.4	3.2	3.2	18
20	3.0	2.2	2.6	2.8	2.3	2.8	2.6	2.6	20
22	2.6	1.6	2.0	2.3	1.8	2.2	2.0	2.0	22
24	2.1	1.1	1.5	1.8	1.3	1.7	1.5	1.5	24
26	1.7		1.1	1.4	1.0	1.3	1.1	1.1	26
28	1.4			1.1		1.0			28
组合 combi nation	01222	22211	12221	11222	22221	12222	22222	33333	组合 combi nation

# 起重性能表

## Lifting capacities

T 10.3~27.6m



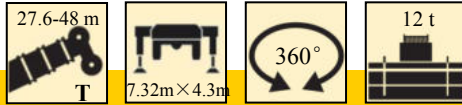
→ m	10.3 m	13.8 m	13.8 m	13.8 m	17.2 m	17.2 m	17.2 m	← m
3	42.5	42.3	41.0	40.5	41.5	40.5	28.1	3
3.5	40.0	41.0	40.2	39.0	38.5	37.5	26.4	3.5
4	37.5	38.0	36.9	35.0	35.0	34.5	24.8	4
4.5	32.0	32.2	32.5	32.6	32.0	32.0	23.4	4.5
5	27.5	27.7	28.1	28.6	27.2	28.1	22.1	5
6	19.6	19.7	20.1	20.5	19.3	20.1	19.9	6
7	15.0	15.0	15.5	15.7	14.7	15.5	16.0	7
8		12.0	12.3	12.7	11.6	12.3	12.8	8
9		9.9	10.1	10.5	9.4	10.1	10.6	9
10		8.2	8.5	8.8	7.9	8.5	8.9	10
12					5.6	6.2	6.6	12
组合 combi nation	00000	01000	00100	00010	11000	01100	00110	组合 combi nation

→ m	20.7 m	20.7 m	20.7 m	24.2 m	24.2 m	24.2 m	27.6 m	← m
3	35.0	27.6	23.9					3
3.5	35.0	25.8	23.0	27.4	28.0	23.7		3.5
4	35.0	23.9	22.1	24.5	26.0	22.8	24.5	4
4.5	32.0	21.5	21.2	22.4	24.0	22.0	24.0	4.5
5	27.6	20.3	20.3	21.4	22.0	21.2	23.5	5
6	19.6	18.2	19.1	19.4	20.1	19.9	19.8	6
7	15.0	15.4	16.4	15.0	15.5	16.3	15.1	7
8	11.9	12.3	13.3	12.0	12.3	13.1	12.1	8
9	9.8	10.1	11.1	9.8	10.1	10.9	9.9	9
10	8.2	8.5	9.4	8.2	8.5	9.3	8.2	10
12	5.9	6.2	7.1	6.0	6.2	6.9	6.0	12
14	4.4	4.7	5.5	4.4	4.8	5.4	4.5	14
16	3.3	3.7	4.4	3.4	3.7	4.3	3.4	16
18				2.6	2.9	3.5	2.6	18
20							2.0	20
22							1.5	22
组合 combi nation	11100	02100	00111	12100	11110	01111	21110	组合 combi nation

# 起重性能表

## Lifting capacities

T 27.6~48m



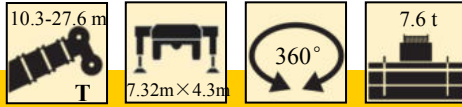
m	Lifting Capacity (t)								m
	27.6 m	27.6 m	31.1 m	31.1 m	31.1 m	34.6 m	34.6 m		
4	24.0	18.2							4
4.5	22.0	17.3	20.0	20.0	15.0				4.5
5	20.0	16.6	20.0	20.0	14.7	15.0	15.0		5
6	18.0	15.2	19.9	18.4	13.5	14.0	15.0		6
7	15.9	14.0	15.6	15.8	12.5	13.0	14.4		7
8	12.8	13.0	12.5	12.7	11.6	12.4	12.8		8
9	10.5	11.2	10.3	10.5	10.8	10.2	10.5		9
10	8.8	9.5	8.6	8.8	9.6	8.6	8.9		10
12	6.5	7.1	6.4	6.5	7.3	6.3	6.6		12
14	5.1	5.6	4.8	5.0	5.8	4.8	5.1		14
16	4.0	4.5	3.7	3.9	4.7	3.7	4.0		16
18	3.1	3.7	3.0	3.1	3.8	2.9	3.2		18
20	2.6	3.1	2.3	2.5	3.1	2.3	2.6		20
22	2.0	2.6	1.8	2.0	2.6	1.8	2.0		22
24			1.4	1.6	2.2	1.4	1.6		24
26						1.0	1.3		26
28							1.0		28
组合 combi nation	11111	01112	21111	12111	01122	22111	12211		组合 combi nation

m	Lifting Capacity (t)								m
	34.6 m	38 m	38 m	38 m	41.5 m	41.5 m	45 m	48 m	
5	13.1								5
6	12.5								6
7	11.8	12.8	12.2	11.5					7
8	11.1	12.5	11.6	10.9	10.8	10.0	8.7		8
9	10.3	10.3	10.7	10.4	10.4	9.4	8.7	7.1	9
10	9.4	8.7	9.1	9.4	8.8	9.0	8.5	7.1	10
12	7.3	6.4	6.7	7.0	6.5	7.0	6.7	6.7	12
14	5.7	4.8	5.2	5.4	5.0	5.4	5.2	5.2	14
16	4.6	3.8	4.2	4.3	3.9	4.3	4.2	4.2	16
18	3.8	3.0	3.3	3.6	3.1	3.5	3.3	3.3	18
20	3.1	2.4	2.7	2.9	2.6	2.9	2.7	2.7	20
22	2.6	1.9	2.2	2.4	2.0	2.4	2.2	2.2	22
24	2.2	1.4	1.8	2.0	1.6	2.0	1.8	1.8	24
26	1.9	1.1	1.4	1.7	1.3	1.6	1.4	1.4	26
28	1.6		1.2	1.4		1.3	1.1	1.1	28
30				1.1		1.0			30
组合 combi nation	01222	22211	12221	11222	22221	12222	22222	33333	组合 combi nation

# 起重性能表

## Lifting capacities

T 10.3~27.6m



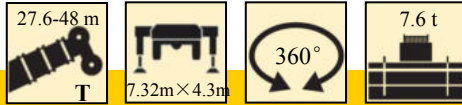
↔ m	10.3 m	13.8 m	13.8 m	13.8 m	17.2 m	17.2 m	17.2 m	↔ m
3	26.0	26.0	27.0	28.0	26.0	27.0	28.1	3
3.5	25.0	25.0	26.0	27.0	25.0	26.0	26.4	3.5
4	24.0	24.0	25.0	25.5	24.0	25.0	24.8	4
4.5	23.0	23.0	24.0	24.5	23.0	24.0	23.4	4.5
5	22.4	22.6	23.0	23.5	22.1	23.0	22.1	5
6	15.8	16.0	16.3	16.7	15.6	16.3	16.9	6
7	11.9	12.1	12.4	12.8	11.6	12.4	12.9	7
8		9.5	9.9	10.1	9.2	9.9	10.3	8
9		7.7	8.0	8.2	7.3	8.0	8.5	9
10		6.4	6.6	6.9	6.0	6.6	7.1	10
12					4.2	4.8	5.2	12
组合 combi nation	00000	01000	00100	00010	11000	01100	00110	组合 combi nation

↔ m	20.7 m	20.7 m	20.7 m	24.2 m	24.2 m	24.2 m	27.6 m	↔ m
3	26.0	27.6	23.9					3
3.5	25.0	25.8	23.0	27.4	26.0	23.7		3.5
4	24.0	23.9	22.1	24.5	25.0	22.8	24.0	4
4.5	23.0	21.5	21.2	22.4	22.0	22.0	23.0	4.5
5	22.5	20.3	20.3	21.4	20.0	21.2	22.6	5
6	15.9	16.3	17.4	16.0	16.3	17.3	16.0	6
7	12.0	12.4	13.4	12.1	12.4	13.3	12.2	7
8	9.4	9.8	10.8	9.5	9.9	10.6	9.6	8
9	7.7	8.0	8.9	7.7	8.0	8.8	7.7	9
10	6.3	6.6	7.5	6.4	6.6	7.4	6.4	10
12	4.4	4.8	5.5	4.4	4.8	5.4	4.5	12
14	3.1	3.5	4.3	3.2	3.5	4.2	3.2	14
16	2.3	2.6	3.3	2.3	2.6	3.2	2.4	16
18				1.7	2.0	2.6	1.7	18
20							1.2	20
组合 combi nation	11100	02100	00111	12100	11110	01111	21110	组合 combi nation

# 起重性能表

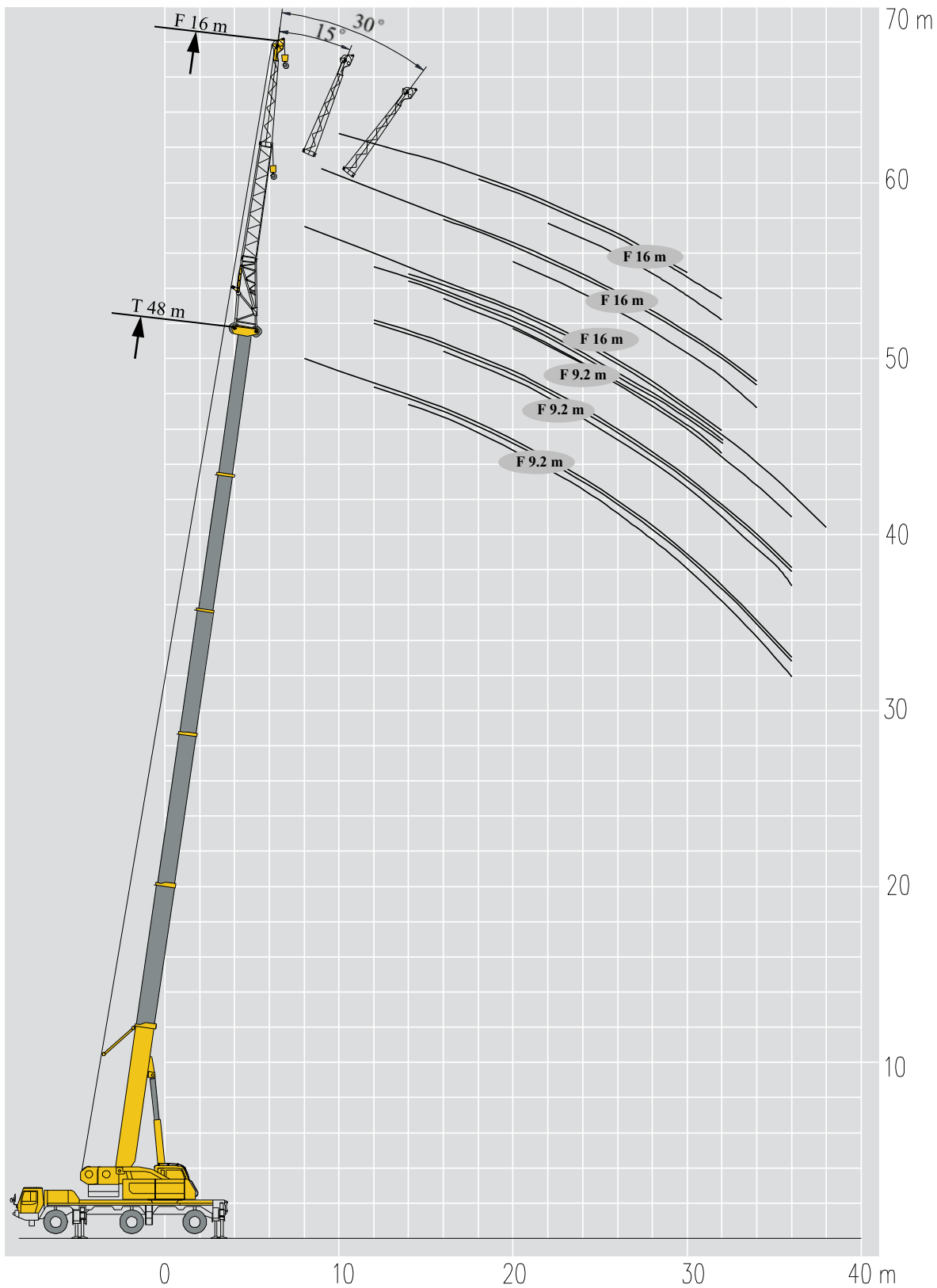
## Lifting capacities

T 27.6~48m



m	Lifting Capacity (t)							m
	27.6 m	27.6 m	31.1 m	31.1 m	31.1 m	34.6 m	34.6 m	
4	24.0	18.2						4
4.5	22.0	17.3	20.0	20.0	15.0			4.5
5	20.0	16.6	20.0	20.0	14.7	15.0	15.0	5
6	16.8	15.2	16.5	16.7	13.5	14.0	15.0	6
7	12.8	13.6	12.6	12.8	12.5	12.5	12.9	7
8	10.3	11.0	9.9	10.2	11.1	9.9	10.3	8
9	8.4	9.1	8.2	8.3	9.2	8.1	8.4	9
10	7.1	7.7	6.7	7.0	7.7	6.7	7.1	10
12	5.1	5.7	4.8	5.1	5.8	4.8	5.1	12
14	3.8	4.4	3.6	3.8	4.5	3.6	3.8	14
16	2.9	3.5	2.7	2.9	3.6	2.6	3.0	16
18	2.2	2.8	2.0	2.2	2.9	2.0	2.3	18
20	1.7	2.2	1.5	1.7	2.4	1.4	1.8	20
22	1.3	1.8	1.1	1.3	2.0	1.1	1.4	22
24					1.6		1.0	24
组合 combi nation	11111	01112	21111	12111	01122	22111	12211	组合 combi nation

m	Lifting Capacity (t)								m
	34.6 m	38 m	38 m	38 m	41.5 m	41.5 m	45 m	48 m	
5	13.1								5
6	12.5								6
7	11.8	12.7	12.2	11.5					7
8	11.1	10.0	10.5	10.7	10.2	10.0	8.7		8
9	9.2	8.2	8.6	8.8	8.3	8.8	8.6	7.1	9
10	7.7	6.8	7.2	7.5	7.0	7.4	7.2	7.1	10
12	5.8	4.9	5.3	5.5	5.1	5.4	5.3	5.3	12
14	4.5	3.7	4.0	4.3	3.8	4.2	4.0	4.0	14
16	3.6	2.7	3.1	3.3	2.9	3.2	3.1	3.1	16
18	2.9	2.1	2.4	2.6	2.2	2.6	2.4	2.4	18
20	2.4	1.5	1.9	2.1	1.7	2.0	1.9	1.9	20
22	2.0	1.1	1.4	1.7	1.3	1.6	1.4	1.4	22
24	1.5		1.1	1.4		1.3	1.1	1.1	24
26	1.3			1.0		1.0			26
28	1.0								28
组合 combi nation	01222	22211	12221	11222	22221	12222	22222	33333	组合 combi nation





# 起重性能表

## Lifting capacities

J 9.2m

m	10.3-38 m T			9.2 m F			7.32m×6.5m			360°			12 t		
	10.3 m			34.6 m			38 m			m					
	0°	15°	30°	0°	15°	30°	0°	15°	30°	0°	15°	30°			
3	7.9												3		
3.5	7.7	6.8											3.5		
4	7.4	6.7											4		
4.5	7.1	6.7											4.5		
5	6.8	6.7											5		
6	6.3	6.2	5.2										6		
7	5.8	5.6	5	5									7		
8	5.2	5.2	4.8	5									8		
9	4.7	4.6	4.2	5	5								9		
10	4.2	4	3.8	5	5		5						10		
12	3.3	3.2	3	5	5	5	5	5.0	4.3				12		
14	2.7	2.6	2.5	5	5	5	5	4.6	4.1				14		
16				5	5	4.9	4.6	4.1	3.9				16		
18				5	4.9	4.7	4.2	3.9	3.5				18		
20				4.7	4.4	4.2	3.5	3.5	3.1				20		
22				3.9	3.9	3.7	3.2	3.1	2.9				22		
24				3.5	3.4	3.4	2.8	2.7	2.7				24		
26				3	3.1	3	2.4	2.4	2.4				26		
28				2.5	2.7	2.7	2.2	2.1	2				28		
30				2.1	2.2	2.3	2	2	2				30		
32				1.8	1.9	2	1.7	1.8	1.7				32		
34				1.5	1.6		1.5	1.5	1.5				34		
36				1.2	1.3		1.2	1.3					36		
38							1	1.1					38		
组合 combi nation	00000			22111			22211			组合 combi nation					

m	41.6-48 m T			9.2 m F			7.32m×6.5m			360°			12 t		
	41.6 m			45.1 m			48 m			m					
	0°	15°	30°	0°	15°	30°	0°	15°	30°	0°	15°	30°			
10	5												10		
12	5	4.8		3.9	3.6		3.4						12		
14	4.8	4.6	4.2	3.8	3.5		3.3	3.4					14		
16	4.3	4.2	4	3.7	3.3	3.2	3.3	3.3	3				16		
18	3.8	3.6	3.5	3.2	3.1	2.9	3	2.9	2.7				18		
20	3.3	3.2	3.2	2.8	2.7	2.6	2.7	2.5	2.4				20		
22	2.8	2.8	2.7	2.6	2.5	2.3	2.2	2.2	2.1				22		
24	2.6	2.4	2.4	2.3	2.2	2.1	2	1.9	1.8				24		
26	2.2	2.1	2.1	2	2	2	1.7	1.6	1.5				26		
28	2	2	1.9	1.7	1.6	1.5	1.5	1.4	1.4				28		
30	1.7	1.7	1.6	1.5	1.4	1.4	1.3	1.3	1.2				30		
32	1.5	1.5	1.5	1.4	1.3	1.2	1	1	1				32		
34	1.4	1.3	1.3	1.1	1.1	1.1							34		
36	1.1	1.1	1.1	1	1	1							36		
组合 combi nation	22221			22222			33333			组合 combi nation					

# 起重性能表

## Lifting capacities

J 9.2m

m	10.3-38 m T		9.2 m F		7.32m×6.5m		360°		7.6 t		m
	10.3 m			34.6 m			38 m				
	0°	15°	30°	0°	15°	30°	0°	15°	30°		
3	7.9										3
3.5	7.7	6.8									3.5
4	7.4	6.7									4
4.5	7.1	6.7									4.5
5	6.8	6.7									5
6	6.3	6.2	5.2								6
7	5.8	5.6	5	5							7
8	5.2	5.2	4.8	5							8
9	4.7	4.6	4.2	5	5						9
10	4.2	4	3.8	5	5		5				10
12	3.3	3.2	3	5	5	5	5	5.0	4.3		12
14	2.7	2.6	2.5	5	5	5	5	4.6	4.1		14
16				5	5	4.9	4.6	4.1	3.9		16
18				4.9	4.9	4.7	4.2	3.9	3.5		18
20				3.9	4.2	4.2	3.5	3.5	3.1		20
22				3.2	3.4	3.6	3.2	3.1	2.9		22
24				2.6	2.8	3	2.6	2.7	2.7		24
26				2.1	2.3	2.4	2.1	2.3	2.4		26
28				1.7	1.9	2	1.7	1.9	2		28
30				1.4	1.5	1.6	1.4	1.5	1.6		30
32				1.1	1.2	1.3	1.1	1.2	1.3		32
组合 combi nation	00000			22111			22211			组合 combi nation	

m	41.6-48 m T		9.2 m F		7.32m×6.5m		360°		7.6 t		m
	41.6 m			45.1 m			48 m				
	0°	15°	30°	0°	15°	30°	0°	15°	30°		
10	5										10
12	5	4.8		3.9	3.6		3.4				12
14	4.8	4.6	4.2	3.8	3.5	0	3.3	3.4			14
16	4.3	4.2	4	3.7	3.3	3.2	3.3	3.3	3		16
18	3.8	3.6	3.5	3.2	3.1	2.9	3	2.9	2.7		18
20	3.3	3.2	3.2	2.8	2.7	2.6	2.7	2.5	2.4		20
22	2.8	2.8	2.7	2.6	2.5	2.3	2.2	2.2	2.1		22
24	2.6	2.4	2.4	2.3	2.2	2.1	2	1.9	1.8		24
26	2.2	2.1	2.1	2	2	2	1.7	1.6	1.5		26
28	1.8	2	1.9	1.7	1.6	1.5	1.5	1.4	1.4		28
30	1.4	1.6	1.6	1.5	1.4	1.4	1.3	1.3	1.2		30
32	1.1	1.3	1.4	1.3	1.3	1.2	1	1	1		32
34		1	1.1	1	1.1	1.1					34
组合 combi nation	22221			22222			33333			组合 combi nation	

# 起重性能表

## Lifting capacities

J 16m

m	10.3-38 m T			16 m F			7.32m×6.5m	360°	12 t	10.3 m			34.6 m			38 m			m
	0°	15°	30°	0°	15°	30°				0°	15°	30°	0°	15°	30°				
3	4.1																		3
3.5	4.1																		3.5
4	4																		4
4.5	4																		4.5
5	3.9																		5
6	3.7																		6
7	3.6																		7
8	3.4							3.9											8
9	3.2	3.2						3.8											9
10	3.1	3						3.8											10
12	2.8	2.6	2.4					3.7	3.1				3.3						12
14	2.6	2.5	2.3					3.5	3				3.2						14
16	2.3	2.2	2					3.4	2.9	2.4			3.2	2.8					16
18	2	2	1.8					3.3	2.8	2.4			3.1	2.6					18
20	1.7	1.8	1.6					3.2	2.7	2.3			2.8	2.6	2.3				20
22								3	2.6	2.3			2.7	2.5	2.2				22
24								2.9	2.5	2.2			2.4	2.4	2.1				24
26								2.7	2.4	2.2			2.1	2	2				26
28								2.5	2.4	2.1			2	1.9	1.9				28
30								2.3	2.3	2.1			1.9	1.9	1.7				30
32								2	2.1	2.1			1.6	1.5	1.5				32
34								1.7	1.9	1.9				1.3	1.3				34
36								1.4	1.6	1.7				1.1	1.1				36
38								1.2	1.3	1.4				1					38
40									1.1										40
组合 combination	00000						22111						22211						组合 combination

m	41.6-48 m T			16 m F			7.32m×6.5m	360°	12 t	41.6 m			45.1 m			48 m			m
	0°	15°	30°	0°	15°	30°				0°	15°	30°	0°	15°	30°				
12	3							2.6					2.3						12
14	2.8							2.6					2.2						14
16	2.8	2.6						2.5	2.4				2.2						16
18	2.8	2.5						2.4	2.3				2.2	2.2					18
20	2.6	2.5	2.2					2.3	2.2	2			2.1	2.1					20
22	2.4	2.4	2.2					2.2	2.2	2			2	2.1	2				22
24	2.3	2.3	2.1					1.9	2	1.9			1.7	1.7	1.7				24
26	2.1	1.9	1.9					1.7	1.7	1.7			1.5	1.5	1.4				26
28	1.8	1.8	1.8					1.5	1.5	1.5			1.4	1.4	1.3				28
30	1.5	1.5	1.5					1.4	1.4	1.4			1.1	1.1	1.1				30
32	1.4	1.4	1.3					1.2	1.2	1.3				1	1				32
34		1.2	1.2					1.1	1.1	1.1									34
36		1.1	1.1																36
38		1																	38
40		0.8																	40
组合 combination	22221						22222						33333						组合 combination

# 起重性能表

## Lifting capacities

J 16m

m	10.3-38 m T			16 m F			7.32m×6.5m	360°	7.6 t	10.3 m			34.6 m			38 m			m
	0°	15°	30°	0°	15°	30°				0°	15°	30°	0°	15°	30°				
3	4.1																		3
3.5	4.1																		3.5
4	4																		4
4.5	4																		4.5
5	3.9																		5
6	3.7																		6
7	3.6																		7
8	3.4							3.9											8
9	3.2	3.2						3.8											9
10	3.1	3						3.8											10
12	2.8	2.6	2.4					3.7	3.1				3.3						12
14	2.6	2.5	2.3					3.5	3				3.2						14
16	2.3	2.2	2					3.4	2.9	2.4			3.2	2.8					16
18	2	2	1.8					3.3	2.8	2.4			3.1	2.6					18
20	1.7	1.8	1.6					3.2	2.7	2.3			2.8	2.6	2.3				20
22								3	2.6	2.3			2.7	2.5	2.2				22
24								2.9	2.5	2.2			2.4	2.4	2.1				24
26								2.4	2.4	2.2			2.1	2	2				26
28								1.9	2.2	2.1			1.9	1.9	1.9				28
30								1.6	1.8	2.1			1.6	1.8	1.7				30
32								1.3	1.5	1.7			1.2	1.5	1.5				32
34								1	1.2	1.4				1.2	1.3				34
36									1	1.1					1.1				36
组合 combination	00000						22111						22211						组合 combination



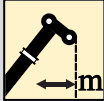
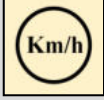







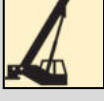


m	41.6-48 m T			16 m F			7.32m×6.5m	360°	7.6 t	41.6 m			45.1 m			48 m			m
	0°	15°	30°	0°	15°	30°				0°	15°	30°	0°	15°	30°				
12	3							2.6					2.3						12
14	2.8							2.6					2.2						14
16	2.8	2.6						2.5	2.4				2.2						16
18	2.8	2.5						2.4	2.3				2.2	2.2					18
20	2.6	2.5	2.2					2.3	2.2	2			2.1	2.1					20
22	2.4	2.4	2.2					2.2	2.2	2			2	2.1	2				22
24	2.3	2.3	2.1					1.9	2	1.9			1.7	1.7	1.7				24
26	2.1	1.9	1.9					1.7	1.7	1.7			1.5	1.5	1.4				26
28	1.8	1.8	1.8					1.5	1.5	1.5			1.4	1.4	1.3				28
30	1.5	1.5	1.5					1.4	1.4	1.4			1.1	1.1	1.1				30
32	1.3	1.4	1.3					1.2	1.2	1.3				1	1				32
34		1.2	1.2					1.1	1.1	1.1									34
36		1	1.1																36
组合 combination	22221						22222						33333						组合 combination

## 符号标识

### Description of symbols

#### 常规标识

##### General symbols

	支腿 Outriggers		车桥 Axle
	工作幅度 Radius		行驶速度 Driving speed
	吊臂仰角 Boom position		爬坡能力 Gradeability
	吊臂长度 Boom length		轮胎 Tires
	吊钩 Hook block		平衡重 Counterweight
	360°全回转 360° rotation		上车 superstructure
	卷扬 Winch		底盘 Chassis

#### 起重作业标识

##### Crane specific symbols

	主臂 Boom		副臂 Jib
--	------------	---	-----------

# 主要技术参数表

## Table of Main Technical Parameters

类别 Category	项目 Item	单位 Unit	参数 Parameter	
尺寸参数 Dimensions	外形尺寸 (长×宽×高) Outline size (length×width×height)	mm	11880×2550×3755(14.0R25) 11880×2550×3805(16.0R25) 11880×2700×3805(20.5R25)	
	轴距 Axle load	mm	2950+1650	
	轮距 (前/后) Track (Front/ Rear)	mm	2150(14.0R25) 2084(16.0R25) 2155(20.5R25)	
	前悬/后悬 Front/ Rear overhang	mm	3080/2060	
	前伸/后伸 Front/ Rear extension	mm	1430/710	
重量参数 Weight	最大允许总质量 Total vehicle mass in travel configuration	kg	36000	
	轴荷	一轴 1st axle	kg	12000
		二轴 2nd axle	kg	12000
		三轴 3rd axle	kg	12000
动力参数 Power	发动机型号 Engine model	—	MC11.35-30	
	额定功率/转速 Engine rated power/rpm	kW/(r/min)	260/1900	
	最大净功率/转速 Max. net power/rpm	kW/(r/min)	257/1900	
	最大输出扭矩/转速 Max. output torque/rpm	N.m/(r/min)	1750/1000-1400	
行驶参数 Travel	最高车速 Max. travel speed	km/h	≥85	
	最低稳定车速 Min. travel speed	km/h	3	
	最小转弯直径 Min. turning diameter	m	≤14.2(公路行驶, 三桥转向, 14.0R25) ≤16.5(公路行驶, 三桥转向, 16.0R25/20.5R25)	
	最小离地间隙 Min. ground clearance	mm	330(14.0R25) 380(16.0R25/20.5R25)	
	接近角 Approach angle	°	19(14.0R25) 20(16.0R25/20.5R25)	
	离去角 Departure angle	°	21(14.0R25) 23(16.0R25/20.5R25)	
	制动距离 (制动初速度为30km/h) Braking distance (at 30 km/h)	m	≤10	
	最大爬坡能力 Max. grade ability	%	70(14.0R25) 63(16.0R25/20.5R25)	
	百公里油耗 Fuel consumption per 100 km	L	49	
	噪音 Noise	加速行驶机外噪声 Exterior noise level	dB(A)	≤82
驾驶员耳旁噪声 Noise level at seated position		dB(A)	≤90	

# 主要技术参数表

## Table of Main Technical Parameters

类别 Category	项目 Item		单位 Unit	参数 Parameter	
主要性能参数 Main performance	最大额定总起重量 Max. total rated lifting capacity		t	60	
	最小额定工作幅度 Min. rated working radius		m	2.1	
	转台尾部回转半径 Turning radius at turntable tail	平衡重处 Counterweight	mm	3750	
		副卷处 Auxiliary winch	mm	4250	
	最大起重力矩 Max. load moment	基本臂 Base boom	kN.m	1858	
		最长主臂 Fully-extended boom	kN.m	894	
		最长主臂+副臂 Fully-extended boom + Jib	kN.m	529	
	支腿跨距 Outrigger span	纵向 Longitudinal	m	7.32	
		横向 Lateral	m	6.5	
	起升高度 Hoist height	基本臂 Base boom	m	10.2	
		最长主臂 Fully-extended boom	m	48	
		最长主臂+副臂 Fully-extended boom + Jib	m	63	
	起重臂长度 Boom length	基本臂 Base boom	m	10.3	
		最长主臂 Fully-extended boom	m	48	
		最长主臂+副臂 Fully-extended boom + Jib	m	64	
副臂安装角 Jib offset angle		°	0、15、30		
工作速度参数 Working speed	起重臂起臂时间 Boom raising time		s	≤38	
	起重臂全伸时间 Boom fully extended time		s	≤310	
	最大回转速度 Max. slewing speed		r/min	≥1.5	
	支腿收放时间 Outrigger extending and retracting time	水平支腿 Outrigger beam	收 Retracting	s	≤20
			放 Extending	s	≤20
		垂直支腿 Outrigger jack	收 Retracting	s	≤60
			放 Extending	s	≤30
起升速度 (单绳,第四层,空载) Hoisting speed (single line, 4th layer, no load)	主起升机构 Main winch		m/min	≥135	
	副起升机构 Auxiliary winch		m/min	≥135	
噪声 Noise	机外辐射 Exterior noise level		dB ( A )	≤109	
	司机位置处 Noise level at seated position		dB ( A )	≤80	

## 注意事项

### Notes

1. 表中额定总起重量值，是在平整的坚固地面上本起重机能够保证的最大总起重量，包括吊钩和吊具的重量，所以为了估算重物重量，必须减去上述的装置重量。
2. 表中的工作幅度为起吊重物离地时起重物到起重机回转轴线的水平距离，是包括起重臂变形量在内的实际值，因而起吊前应考虑起重臂变形量。
3. 只允许在5级(风速14.1m/s，风压125N/m<sup>2</sup>)风以下进行作业。
4. 吊重前操作者必须对物体的重量和工作范围了解后选择合适的作业工况，严禁超出表中的数值。幅度及臂长在相邻两个数值之间时，应依据两个数值中较小值确定起重作业。
5. 应按主臂仰角范围作业，即使是空载，也不应使主臂仰角处于范围外，谨防整机倾翻。
6. 表中的主臂长度应要按照每节臂的伸缩要求进行伸出。

1. The total rated loads given in the rated load charts are the maximum lifting capacity when the crane is set up on firm and level ground, which includes the weight of the hook block and slings. The weight of above-mentioned devices should be deducted to correctly calculate the load weight.
2. The working radius shown in the rated load charts is the radius when the load is lifted off the ground, and it is the actual value including loaded boom deflection.
3. A lifting operation is permissible only when the wind force is below grade 5 (instantaneous wind speed is 14.1/s, wind pressure is 125N/m<sup>2</sup>).
4. Before beginning lifting operation, the operator should know the weight of the load to be lifted and its working range, and then select proper working conditions. Never operate the crane beyond the limit shown in the chart. Use the lower value from the chart when the boom length or working radius is between the range of values.
5. Observe the boom angle limit. Never operate the crane with the boom angle beyond the recommended limit even if a load is not being carried. Otherwise, the crane will tip.
6. The boom length given in the rated load charts should accord with the telescoping code of boom sections .





地址：江苏省徐州市经济技术开发区高新路68号

Add : No. 68, Gaoxin Road, Economic Development  
Zone, Xuzhou, Jiangsu Province, China

电话(Tel) : +86-516-83462242/83462350

质量监督电话(Quality Inquiry Tel) : +86-516-87888268

备件电话(Spare Parts Tel) : +86-516-83461542

邮编(Post Code) : 221004

网址(Web) : [www.xcmg.com/qizhongji](http://www.xcmg.com/qizhongji)

**服务热线 Service Tel**

**400-110-9999**

**400-001-5678**



本印刷品不属于合同。出于产品不断改进的需要，我们保留对产品型号、参数、配置进行变更的权利，恕不另行通知。图片仅供参考，具体产品以实物为准。图片中产品可能并非标准配置，部分部件可能需要另行购置。办理牌照和上路行驶需遵守当地法规。

This print does not belong to the contract. We reserve the right to modify the design (such as product model, parameters and configuration) without notice for improvement. The pictures are just for reference. The product in the picture may not be standard configuration. Some parts need to be purchased separately. Conform to the local laws for license application and road traveling.