

集装箱正面吊运起重机 / Container Reach Stacker (Fully Electric Version)

XCS4531E



5层

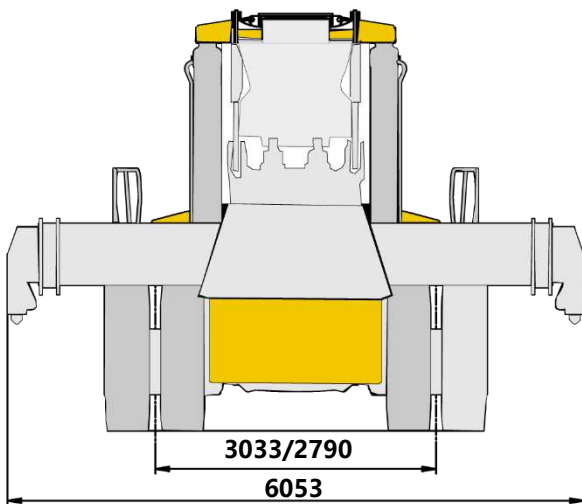
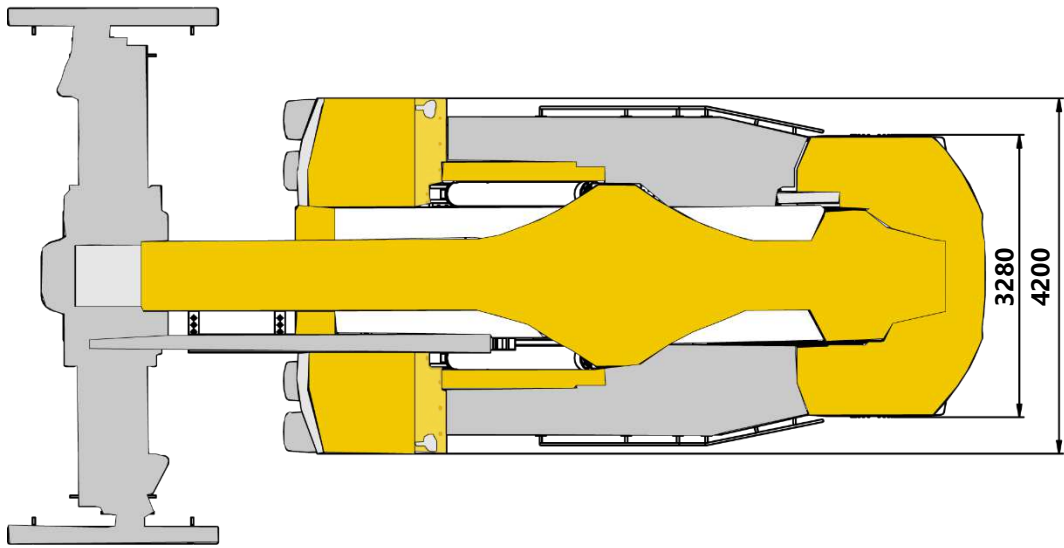
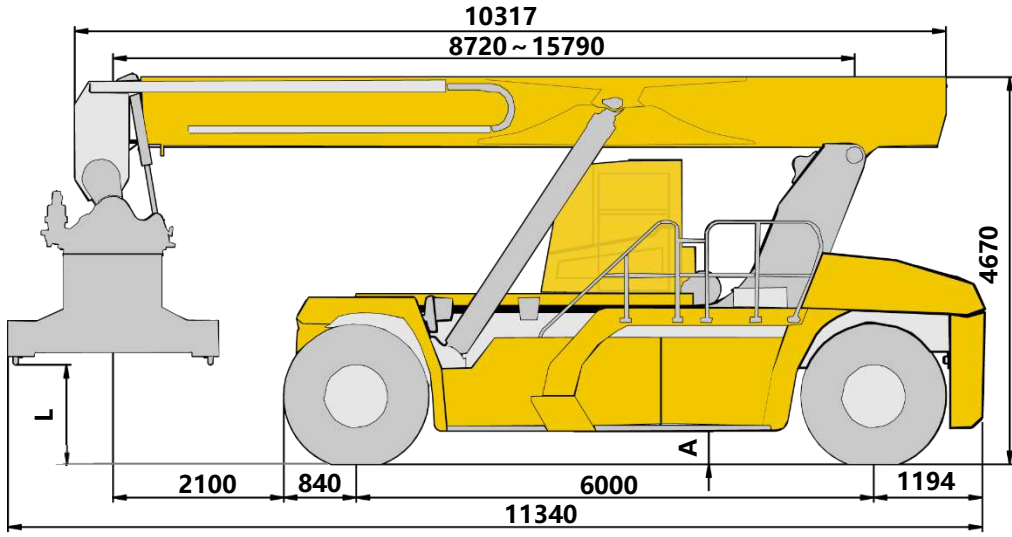
5 Containers

目录

Contents

目录 Contents	页码 Page
尺寸参数 Dimensions	3
技术规格 Technical specifications	4-5
重量/作业速度 Weight / Working speeds	6
起重能力 Lifting capacity	7
运输部件尺寸 Dimensions of transported parts	8-9
通道宽度 Aisle width	10
注意事项 Notes	11

尺寸参数 Dimensions



吊具 Spreader	L	A
徐工 XCMG	1200	350
Bromma	1155	350

技术规格

Technical specifications

标准配置

吊具

徐工吊具，具有伸缩、侧移、旋转和旋锁控制等功能，适用于20'和40'国际标准集装箱作业。

额定起重量：45t。

侧移距离：±800mm。

旋转角度：-105°~+195°。

司机室

全景司机室，视野开阔。

配置人体工程学座椅、两点式伸缩安全带、24V电源、收音机和高清倒车影像系统。

空调

大功率、全自动冷暖冷空调。

驱动电机

永磁同步电机，输出扭大、效率高、噪声低、免维护。

峰值功率：346kW。

峰值扭矩：3800Nm。

动力电池组

行业成熟的磷酸铁锂电池，能量密度大、循环寿命长、安全性好。

动力电池组电压：618V；

动力电池组容量：422kWh。

驱动桥

德国Kessler D102PL341重载驱动桥。

轮胎

6个18.00-25 40PR斜交轮胎。

制动

行车制动：湿式盘式制动器，作用于前桥，配置独立散热油箱、高性能滤油器和散热器。

驻车制动：盘式制动器，作用于前桥。

转向

全液压力转向，转向轻便。

液压系统

采用美国Parker变量柱塞泵、阀件，系统具有复合动作、垂直起升和吊具防摇摆功能。配置高性能滤油器和大功率独立散热器。

电气系统

576V 高压电系统，配置行业成熟的BMS电池管理系统，适用220V、380V电源，可选不同功率的固定式、移动式充电桩，使用方便。

24V 低压电系统，CAN总线控制，2个蓄电池，负极搭铁。

行车灯：车辆前方2个前照灯、2个转向灯；车辆后方2个转向灯、2个制动灯、2个倒车灯。

工作灯：吊具锁头处4个工作灯、起重臂中部4个工作灯、车辆后方2个工作灯。

警示灯：起重臂后方1个危险报警灯。

安全装置

三级绝缘防护，实时漏电监测及主动保护、电流电压过载保护、烟雾报警、自动灭火控制、力限器、2.5m远距离倒车雷达1个2kg灭火器。

车架

抗扭转大截面框架结构车架，采用高强度钢焊接而成。

起重臂

2节四边形伸缩臂，抗扭曲设计，采用高强度钢板焊接而成。

选装配置

吊具

Bromma RSX40吊具，具有伸缩、侧移、旋转和旋锁控制等功能，适用于20'和40'国际标准集装箱作业。

额定起重量：45t。

侧移距离：±800mm。

旋转角度：-105°~+195°。

产品各部件明细如上所述，具体部件明细请参照产品报价单。

技术规格

Technical specifications

Standard equipment

Spreader The spreader is suitable for handling 20' and 40' standard containers. Telescoping, side shift and rotating function, as well as twist lock control are available.
Its maximum lifting capacity is 45 t, and side shift is ± 800 mm.

Cab Full-view driver's cab.
Equipped with ergonomic seat, two point retractable seat belt, 24V power supply, radio and HD Reverse view system.

Air condition High-power, fully automatic heating and cooling air condition.

Motor Permanent magnet synchronous electric motors and have advantages of large torque, high efficiency, low noise and maintenance-free.
Peak power : 346kW.
Peak torque : 3800 Nm.

Battery pack Proven iron phosphate lithium battery, high energy density, long cycle life and good safety.
Voltage of battery pack: 618V.
Capacity of battery pack: 422 kWh.

Drive axle D102PL341 heavy duty drive axle, manufactured by German Kessler.

Tires 6 diagonal tires, Tire specifications: 18.00-25 40PR.

Brakes Service brake: wet disc brake, acting on the front wheels, and equipped with independent cooling tank, high performance filter and radiator.
Parking disc brake, acting on the front axle.

Steering Equipped with full hydraulic power steering, and easy to use.

Hydraulic system America Parker variable plunger pump and valves, the system has compound action, vertical lifting and spreader anti-swing function.

Equipped with high performance filter and high power independent radiator.

618V high voltage system., proven BMS battery management system, Power sources of 220 V and 380 V are practicable. Stationary and mobile charging poles with different powers may be used, easy to use.

24V Can bus control system, two batteries, negative ground.

Electric System Driving lights: two headlights, two turning signals in front of the vehicle; two turning signals, two brake lights and two reversing lights behind the vehicle.

Working lights: four working lights at the spreader locks, four working lights at the middle of the boom, two working lights behind the vehicle.

Warning lights: one rotating alarm lamp at the back of the vehicle.

Safety devices Three-level insulation protection, real-time monitoring of electric leakage & active protection, current & voltage overload protection, smoke warning and automatic fire extinguishing, LMT, 2.5m long distance astern radar, one 2kg fire extinguisher.

Frame is made of fine grain high tension steel, with anti-torsion large cross-section, strong carrying capacity.

Frame Finite element analysis and zero order design optimization method adopted for key structures ensure the strength and stiffness of structural members.

Boom Two-stage, quadrangular telescopic boom, anti-torsion design, leading to better operating performance and anti-torsion ability.

Additional equipment

Spreader Bromma spreader is suitable for handling 20' and 40' standard containers. Telescoping, side shift and rotating function, as well as twist lock control are available.
Rated lifting capacity: 45 t.
Side shift: ± 800 mm.
Rotation angle: $-105^{\circ} \sim +195^{\circ}$.

Product parts list is as mentioned above, refer to the product quotation for specific parts.

重量 Weight

项目 Item	前轴 Front Axle	后轴 Rear Axle	总重量 Total weight	允差范围 Tolerance
空载 Unloaded	34406kg	36409kg	70816kg	±3%
满载 Rated load	99923kg	15893kg	115816kg	±3%

轴荷为45t载荷处于第一排时的数值。

The axle loads listed in the table are the values when 45t Load located on the first row.

作业速度 Working speeds

项目 Item	空载 Unloaded	满载 Rated load	允差范围 Tolerance
起升速度 Lifting speed	420mm/s	250mm/s	±10%
下落速度 Lowering speed	360mm/s	360mm/s	±10%
行驶速度 Traveling speed	20km/h	14km/h	±10%

吊具参数 Spreader specifications

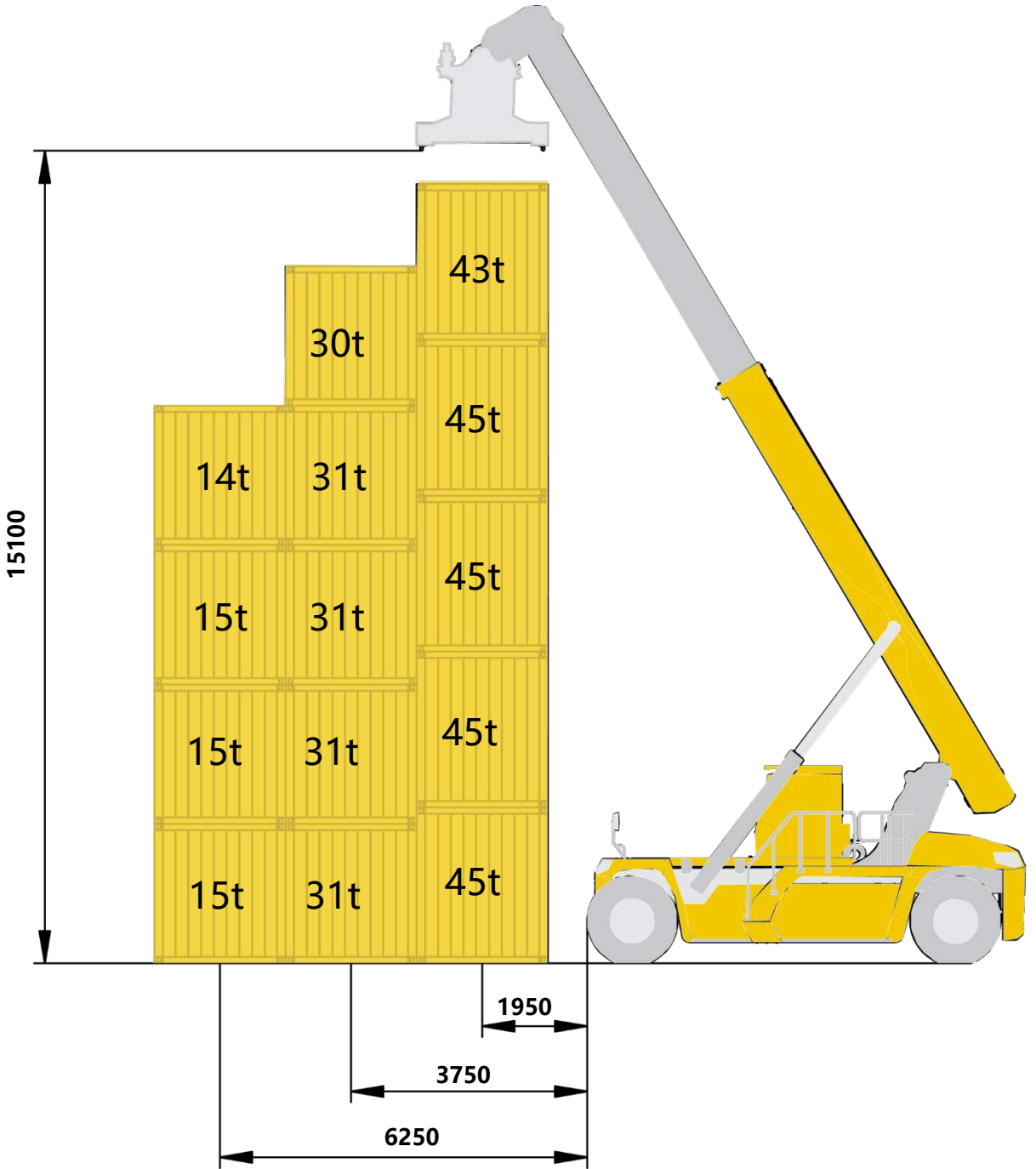
项目 Item	徐工吊具 XCMG Spreader	Bromma 吊具 Bromma Spreader	允差范围 Tolerance
起重量 Lifting capacity	45000kg	45000kg	≥
侧移距离 Side shift	±800mm	±800mm	±1.5%
伸缩时间 Telescoping time	伸出 Extend: 25s 缩回 Retract: 11s	15s	±10%
旋转时间 Rotating time	50S	50s	±10%
侧移时间 Shifting time	15s	15s	±10%
开闭锁时间 Lock\unlock time	1s	1s	±10%

动力参数 Power specifications

项目 Item	参数 Parameter
动力电池组电压 Voltage of battery pack	618V
动力电池组电量 Capacity of battery pack	422kwh
电机峰值功率 Motor peak power	346kw
电机峰值扭矩 Motor peak torque	3800Nm

起重能力

Lifting capacities



吊具 Spreader	最大起升高度 Max. Lifting Height	最大起重量 Max. Lifting Capacity	堆码层数 Number of Stacking
徐工 XCMG	15375mm	45t	5 (9'6")-5 (8'6") -4 (8'6")
Bromma	15100mm		

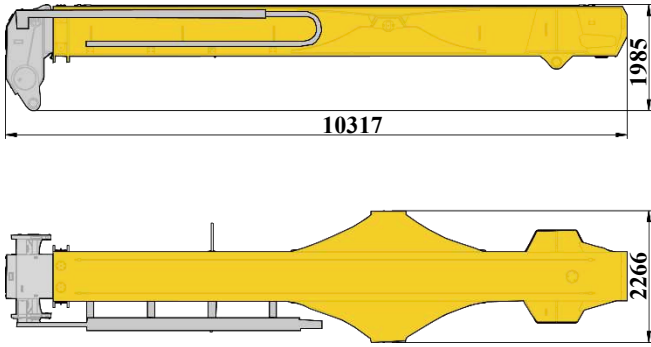
运输部件尺寸

Dimensions of transported parts

2

起重臂组件 Boom assembly

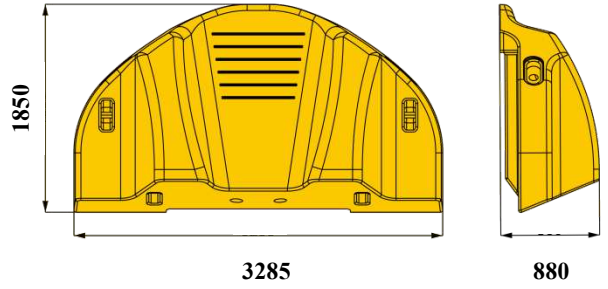
重量 Weight 13935kg
数量 Qty 1



4

平衡重A Counterweight A

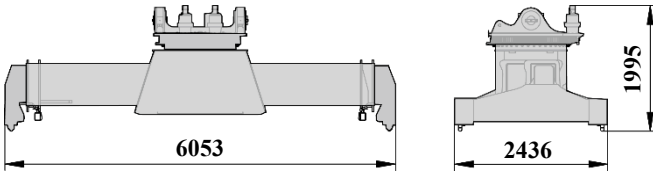
重量 Weight 13.742kg
数量 Qty 1



3

吊具 Spreader

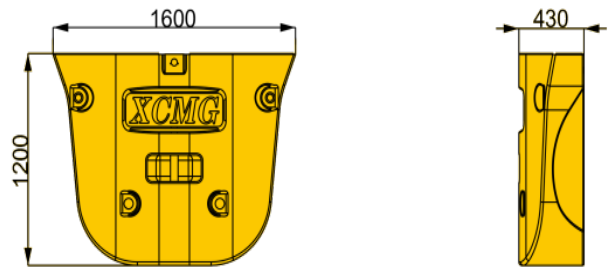
重量 Weight 8000kg
数量 Qty 1



5

平衡重B Counterweight B

重量 Weight 3826kg
数量 Qty 1



注：以上均为单件重量，起重臂组件包含起重臂和伸缩油缸。

NOTES: All of these are single piece weight, and boom assembly include boom and telescopic cylinder.

主要技术参数

Main Technical Data

序号 No.	项目 Item		单位 Unit	参数 Parameter	允差 Tolerance
1	长度 length		mm	11340	±2%
2	宽度 Width	吊具 Spreader	mm	6053	±2%
3		前轮 Front wheel	mm	4200	±2%
4	高度 Height		mm	4670	±2%
5	轴距 Wheelbase		mm	6000	±1%
6	轮距 Trace	前 Front	mm	3033	±1%
7		后 Rear	mm	2790	±1%
8	悬距 Overhang	前 Front	mm	840	±1%
9		后 Rear	mm	1194	±1%
10	最小离地间隙 Min. ground clearance		mm	350	±1%
11	最小转弯半径 Min. turning radius		mm	8000	≤102%
12	最大爬坡能力 Max. gradeability (满载)		%	13%	≥90%
13	自重 Dead weight		kg	71200	±3%
14	额定起重量 Rated lifting capacity		kg	45000	——
15	堆高能力 Stacking capacity		——	5-5-4	——
16	最大起升高度 Max. lifting height		mm	15100	±1.5%
17	最大起升速度 Max. lifting speed	空载 Unloaded	mm/s	420	±10%
18		满载 Rated load	mm/s	250	±10%
19	最大下降速度 Max. lowering speed	空载 Unloaded	mm/s	360	±10%
20		满载 Rated load	mm/s	300	±10%
21	最大行驶速度 Max. traveling speed	空载 Unloaded	km/h	20	±10%
22		满载 Rated load	km/h	14	±10%
23	通道宽度 Aisle width	20'	mm	11300	±2%
24		40'	mm	13600	±2%

主要配套件明细表

Main parts list

序号 NO.	名称 Name	型号 Model	厂家 Manufacturer
1	吊具 (徐工) Spreader (XCMG)	XJD450	徐州徐工港口机械有限公司 Xuzhou XCMG Port Machine Co.,Ltd.
2	吊具 (Bromma) Spreader (Bromma)	RSX40	瑞典 Bromma Sweden Bromma
3	驱动轴 Drive Axle	D102PL341	德国 Kessler Germany Kessler
4	油泵 Pump	P105	美国 Parker America Parker
5	主阀 Main valve	M402LS-2-4092B	美国 Parker America Parker
6	伸缩油缸 Telescopic cylinder	XCS45_2.16	徐州徐工液压件有限公司 Xuzhou Hydraulic Parts Co., Ltd. XCMG
7	变幅油缸 Luffing Cylinder	XCS45_2.28	徐州徐工液压件有限公司 Xuzhou Hydraulic Parts Co., Ltd. XCMG
8	轮胎 Tire	18.00-25	贵州轮胎股份有限公司 Guizhou Tyre Co., Ltd. 杭州中策橡胶有限公司 Hongzhou Zhongce Rubber Co., Ltd.
9	司机室 Cab	XCS4531K.03	扬子钣金有限公司 Hubei Qixing Cabin Manufacturing Co., Ltd.
10	散热器 Radiator	XCS4531K.48	艾克奇散热器 AKG Thermal Systems(Taicang) Co.,Ltd

注意事项

Notes

1. 本手册仅供参考，所有信息均仅供说明，不应依赖它去操作集装箱正面吊，车辆的正确操作说明请参见操作手册。
2. 集装箱正面吊属于非道路车辆，车辆的行驶需遵守当地的交通规则和法规要求。车辆长途转移时，必须使用其它车辆拖运，同时考虑车辆的总重、轴荷和轮廓尺寸的限制要求。
3. 集装箱正面吊必须在坚实的地面上工作，地面坡度不得大于3%。
4. 集装箱正面吊作业时，风力不得大于6级。在有风条件下作业时，必须认真观察和注意风速、设备状态及作业环境等各个方面。另外，必须考虑到地面与高空，平地与街道地区的风速有很大差别。

1. All information in the brochure is provided for reference only. Never rely on it to operate the machine. Refer to the operation manual for operation instructions of the machine.
2. Container reach stacker belong to off-road machines. Local traffic rules and regulations must be observed. For long-distance job site transfer, use a trailer and take GVW, axle load and dimensions of the machine into consideration.
3. The machine must be operated on firm ground, which gradient does not exceed 3%.
4. Operation of the machine is permissible only when the wind force is below grade 6.
When operating the machine under wind, it is necessary to observe wind speed, equipment status and operating environment. In addition, the wind velocity on the ground is different with that in the high air, and it is also different on flat ground and in city air, which shall be taken into account.



地址：中国江苏徐州市铜山路165号

Add: No.165 Tongshan Road Xuzhou Jiangsu China

电话(Tel): +86-516-83462242/83462350

质量监督电话(Quality Inquiry Tel): +86-516-87888268

备件电话(Spare Parts Tel): +86-516-83461542

邮编(Post Code): 221004

网址(Web): www.xcmg.com

服务热线 Service Tel

400-110-9999

400-001-5678



本印刷品不属于合同。出于产品不断改进的需要，我们保留对产品型号、参数、配置进行变更的权利，恕不另行通知。图片仅供参考，具体产品以实物为准。图片中产品可能并非标准配置，部分部件可能需要另行购置。办理牌照和上路行驶需遵守当地法规。

This print does not belong to the contract. We reserve the right to modify the design (such as product model, parameters and configuration) without notice for improvement. The pictures are just for reference. The product in the picture may not be standard configuration. Some parts need to be purchased separately. Conform to the local laws for license application and road traveling.