

徐工徐工 助您成功

XCMG FOR YOUR SUCCESS



LARGE OPEN PIT MINE EQUIPMENT

# 大型成套矿业装备



 **徐州徐工矿业机械有限公司**  
XUZHOU XCMG MINING MACHINERY CO.,LTD

WWW.XCMG.COM

地址：江苏省徐州市和平大道169号

邮编：221000

全国统一客服热线：400-110-9999 0516-83113333

Address: No. 169, Heping Avenue, Xuzhou City, Jiangsu Province, R.P.CHINA

Postal Code: 221000

Hot Line: 400-110-9999 0516-83113333

材料和规格可随时改变，恕不另行通知

Materials and specifications are subject to change without notice.



欢迎访问徐工商城  
省心更省钱一站式



微信扫一扫  
订阅公众号

XCMG-202203





# 担大任 行大道 成大器

Taking great responsibilities  
Acting with great morals  
And Making great achievements

矿业机械是徐工战略支柱产业，致力于为客户提供成套定制化施工解决方案和项目施工专业服务保障方案。产品涵盖挖装、运输、破碎及辅助设备，产品包括矿用液压挖掘机、矿用自卸车、移动破碎筛分及矿用平地机等，可以满足客户成套定制化设计需求和专业服务保障需求。

Mining machinery is the strategic pillar industry of XCMG. It is committed to providing customers with professional mining complete customized construction solutions and project construction professional service guarantee programs. The products cover excavation, transportation, crushing and auxiliary equipment. The products include mining hydraulic excavators, mining dump trucks, mobile crushing and screening machines, mining graders to meet customers' customized design requirements and professional support requirements.

- **中小型矿业施工：**露天采矿、表层剥离施工，可选择徐工70-120t矿用挖掘机与40-100t轻型矿用自卸车，确保施工更经济、更高效、更快捷。  
Small and medium-sized mining construction, Open pit mining, surface peeling construction. Optional 70-120t XCMG mining excavator and 40-100t lightweight mining truck. so as to ensure more economic, efficient, and rapid construction.
- **大型露天矿业施工：**露天采矿、剥离运输施工、废岩的挖掘运输施工，可选择徐工200-700t液压铲与90-360t矿用自卸车组成大型成套化矿业施工机群。  
Large-scale open-pit mining construction, open pit mining, stripping transportation construction, excavation and transportation construction of waste rock, XCMG200-700t hydraulic excavator and 90-360t mining dump truck can be selected to form a large-scale complete mining construction machine group.
- **有色金属矿业和水利建设：**在矿区陡峭、湿滑，道路泥泞复杂的区域施工，设备对环境的适用性尤为重要。70-120t矿用挖掘机、30-60t铰接式自卸车的组合是最优成套解决方案。  
Non-ferrous metal mining and water conservancy construction, in the construction of steep, slippery, and muddy roads in the mining area, the applicability of equipment to the environment is particularly important. The combination of 70-120t mining excavator and 30-60t articulated dump truck is the optimal solution.
- **骨料生产、建筑垃圾再生：**100-1000t/h移动式破碎筛分将以专业技术创造更多效益；矿山破碎，1000-6000t/h固定、半移动式破碎生产线，搭配液压挖掘机、轻型矿车或铰接式自卸车将提供最合理的成套化解决方案。  
Aggregate, regeneration, 100-1000t/h mobile crushing and screening to create more efficiency with professional technology. Mine crushing, 1000-6000t/h fixed, semi-mobile crushing production line, with mining hydraulic excavators, wide-body tripper or ADT will provide optimal solutions.



## 施工案例 CONSTRUCTION CASE

山西煤矿



非洲锰矿



湖北砂石料



## 矿用挖掘机 MINING EXCAVATOR

XE 系列大型矿用挖掘机以精益的制造、专业的设计、优异的可靠性带给您非凡的驾驶体验。强劲的挖掘动力，迅捷的作业速度，即使面对恶劣的矿山工况，同样拥有完美的作业性能和经济性能。

The XE series of large mining hydraulic excavators bring you an extraordinary driving experience with lean manufacturing, professional design and excellent reliability. Moreover, this series of products boast strong excavating power and quick operating speed, making them have matchless operating performance and economic efficiency even in severe mining condition.



# XE700DF矿用挖掘机 MINING EXCAVATOR



## 主要参数/ Main Specifications

型号 Model	单位 UMO	参数 Parameters
操作重量 Operation Weight	kg	70000
铲斗容量 Bucket Capacity	m <sup>3</sup>	2.4-4.6

发动机 Engine		
发动机型号 Model	/	2206D-E13TA
直喷 Direct injection	/	√
4冲程 Four strokes	/	√
水冷 Water cooling	/	√
涡轮增压 Turbo-charging	/	√
空空中冷 Air to air intercooler	/	√
缸数 No. of cylinders	/	6
发动机输出功率 Output power	kw/rpm	328/2100
最大扭矩/转速 Torque/Speed	N.m/rpm	2010/1400
排量 Displacement	L	12.5

主要性能 Main performance		
行走速度 Travel speed	km/h	4.2/3.0
回转速度 Rotating speed	r/min	7
爬坡能力 Gradeability	°	35°
接地比压 Ground pressure	kPa	101.4
铲斗挖掘力 Bucket digging force	kN	363
斗杆挖掘力 Arm crowd force	kN	300
最大牵引力 Maximum traction	kN	485

液压系统 Hydraulic system		
主泵 Main pump	/	2个柱塞泵 Plunger pumps
主泵额定流量 Rated flow of main pump	L/min	2 × 450
主安全阀压力 Pressure of prime valve	MPa	31.4/34.3
行走系统压力 Pressure of travel system	MPa	34.3
回转系统压力 Pressure of swing system	MPa	28.5
先导系统压力 Pressure of pilot system	MPa	3.9

油类容量 Oil Capacity		
燃油箱容积 Fuel tank capacity	L	825
液压油箱容积 Hydraulic tank capacity	L	500
发动机机油容量 Engine oil capacity	L	45

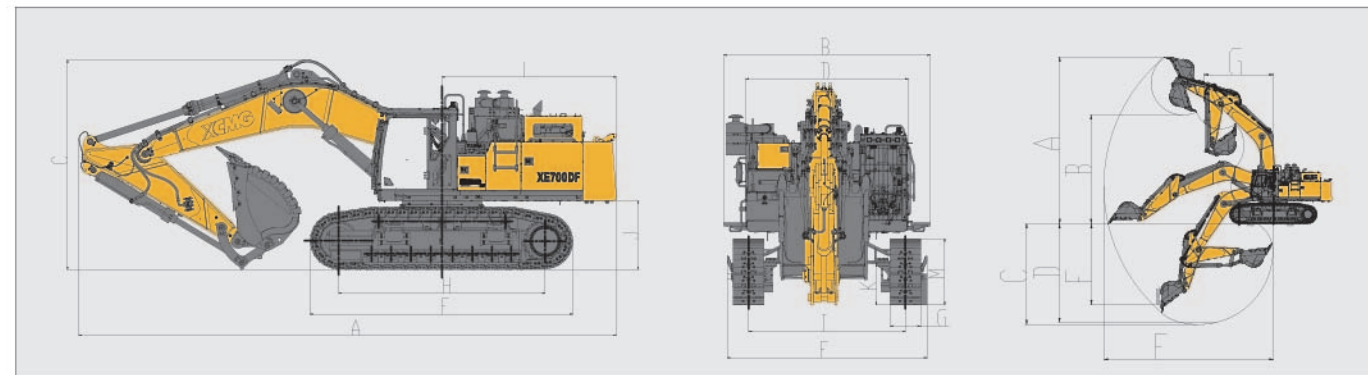
型号 Model	单位 UMO	参数 Parameters
----------	--------	---------------

外形尺寸 Appearance size		
A 总长 Overall length	mm	12130
B 总宽 Overall width	mm	4410
C 总高 Overall height	mm	4700
D 转台宽度 Width of platform	mm	3470
E 履带长度 Length of crawler	mm	5875
F 底盘总宽 Overall width of chassis	mm	4370
G 履带宽度 Width of crawler	mm	650
H 履带轴距 Track length on ground	mm	4700
I 轨距 Crawler gauge	mm	2750/3410
J 配重离地间隙 Clearance under counterweight	mm	1565
K 最低离地间隙 Min. ground clearance	mm	853
L 尾部最小回转半径 Min. tail swing radius	mm	4090
M 履带高度 Height of crawler	mm	1420

作业范围 Working scope		
A 最大挖掘高度 Max. digging height	mm	11350
B 最大卸载高度 Max. dumping height	mm	7370
C 最大挖掘深度 Max. digging depth	mm	6900
D 8英尺水平面挖掘深度 8-inch horizontal plane digging depth	mm	6750
E 最大垂直挖掘深度 Max. vertical wall digging depth	mm	5500
F 最大挖掘半径 Max. digging reach	mm	11580
G 最小回转半径 Min. swing radius	mm	4750

标配 Standard		
动臂长度 Length of boom	mm	6600
斗杆长度 Length of arm	mm	2900
斗容 Bucket capacity	m <sup>3</sup>	4.0 (加强 Strength)

选配 Option		
动臂长度 Length of boom	mm	7300
斗杆长度 Length of arm	mm	3500
斗容 Bucket capacity	m <sup>3</sup>	2.4 (松土 Soft soil) 2.8 (岩石 Rock)
	m <sup>3</sup>	3.1 (岩石 Rock) 3.5 (岩石 Rock)
	m <sup>3</sup>	3.8 (加强 Strength) 4.6 (土方 Soil)



材料和规格可随时改变，恕不另行通知。  
Materials and specifications in the catalogue are subject to change at anytime without notice.

# XE700D矿用挖掘机 MINING EXCAVATOR



## 主要参数/ Main Specifications

型号 Model	单位 UOM	参数 Parameters
操作重量 Operation Weight	kg	69000
铲斗容量 Bucket Capacity	m <sup>3</sup>	2.4-4.6

发动机 Engine		
发动机型号 Model	/	QSX15
直喷 Direct injection	/	√
4冲程 Four strokes	/	√
水冷 Water cooling	/	√
涡轮增压 Turbo-charging	/	√
空空中冷 Air to air intercooler	/	√
缸数 No. of cylinders	/	6
额定输出功率/转速 Output power	kw/rpm	336/1800
最大扭矩/转速 Torque/Speed	N.m	2102/1400
排量 Displacement	L	15

主要性能 Main performance		
行驶速度(高/低) Travel speed (H/L)	km/h	4.2/3.0
回转速度 Rotating speed	r/min	7
爬坡能力 Gradeability	°	35°
接地比压 Ground pressure	kPa	101.4
铲斗挖掘力 Bucket digging force	kN	363
斗杆挖掘力 Arm crowd force	kN	300
最大牵引力 Maximum traction	kN	450

液压系统 Hydraulic system		
主泵 Main pump	/	2个柱塞泵 Plunger pumps
主泵额定流量 Rated flow of main pump	L/min	2 × 450
主安全阀压力 Pressure of prime valve	MPa	31.4/34.3
行走系统压力 Pressure of travel system	MPa	34.3
回转系统压力 Pressure of swing system	MPa	28.5
先导系统压力 Pressure of pilot system	MPa	3.9

油类容量 Oil capacity		
燃油箱容积 Fuel tank capacity	L	950
液压油箱容积 Hydraulic tank capacity	L	500
发动机机油容量 Engine oil capacity	L	48

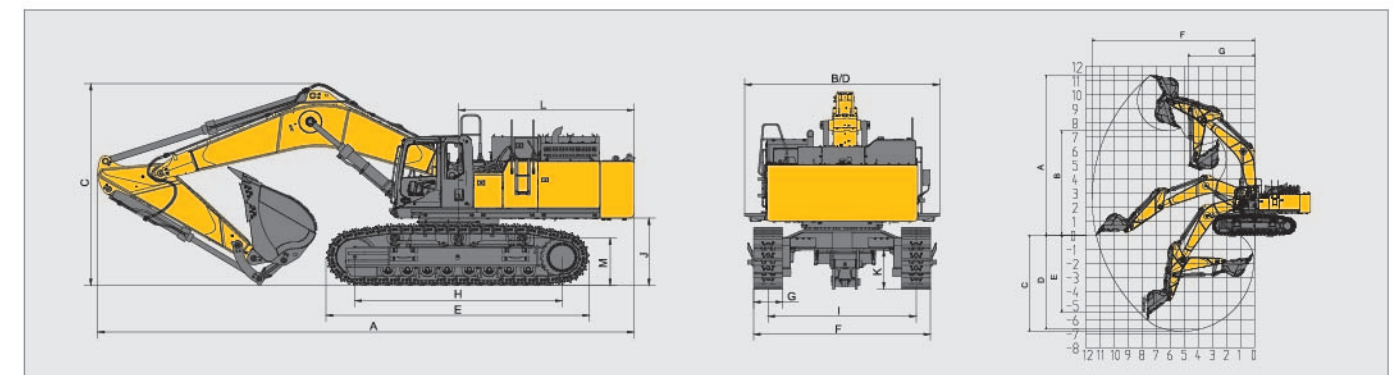
型号 Model	单位 UOM	参数 Parameters
----------	--------	---------------

外形尺寸 Outline dimension		
A 总长 Overall length	mm	12130
B 总宽 Overall width	mm	4410
C 总高 Overall height	mm	4700
D 转台宽度 Width of platform	mm	4410
E 履带长度 Length of crawler	mm	5955
F 底盘总宽 Overall width of chassis	mm	4000
G 标准履带板宽度 Width of crawler	mm	650
H 履带轴距 Track length on ground	mm	4685
I 轨距 Crawler gauge	mm	2800/3350
J 配重离地间隙 Clearance under counterweight	mm	1565
K 最低离地间隙 Min. ground clearance	mm	853
L 尾部最小回转半径 Min. tail swing radius	mm	4090
M 履带高度 Height of crawler	mm	1286

作业范围 Working scope		
A 最大挖掘高度 Max. digging height	mm	11350
B 最大卸载高度 Max. dumping height	mm	7370
C 最大挖掘深度 Max. digging depth	mm	6900
D 8英尺水平面挖掘深度 8-inch horizontal plane digging depth	mm	6750
E 最大垂直挖掘深度 Max. vertical wall digging depth	mm	5500
F 最大挖掘半径 Max. digging reach	mm	11580
G 最小回转半径 Min. swing radius	mm	4750

标配 Standard		
动臂长度 Length of boom	mm	6600
斗杆长度 Length of arm	mm	2900
铲斗斗容 Bucket capacity	m <sup>3</sup>	3.8

选配 Option		
动臂长度 Length of boom	mm	7300
斗杆长度 Length of arm	mm	3500
铲斗斗容 Bucket capacity	m <sup>3</sup>	2.4 (冻土 Frozen) 2.8 (岩石 Rock)
	m <sup>3</sup>	3.1 (岩石 Rock)
	m <sup>3</sup>	3.5 (岩石 Rock)
	m <sup>3</sup>	4.0 (加强 Strength)
	m <sup>3</sup>	4.6 (土方 Soil)



材料和规格可随时改变，恕不另行通知。  
Materials and specifications in the catalogue are subject to change at anytime without notice.



# XE700DA矿用挖掘机 MINING EXCAVATOR



## 主要参数/ Main Specifications

型号 Model	单位 UMO	参数 Parameters
操作重量 Operation Weight	kg	70000
铲斗容量 Bucket Capacity	m <sup>3</sup>	2.4-4.6

发动机 Engine		
发动机型号 Model	/	2206D-E13TA
直喷 Direct injection	/	√
4冲程 Four strokes	/	√
水冷 Water cooling	/	√
涡轮增压 Turbo-charging	/	√
空空中冷 Air to air intercooler	/	√
缸数 No. of cylinders	/	6
额定输出功率/转速 Output power	kw/rpm	328/2100
最大扭矩/转速 torque/speed	N.m/rpm	2010/1400
排量 Displacement	L	15

主要性能 Main performance		
行驶速度(高/低) Travel speed (H/L)	km/h	4.2/3.0
回转速度 Rotating speed	r/min	7
爬坡能力 Gradeability	°	35°
接地比压 Ground pressure	kPa	101.4
铲斗挖掘力 Bucket digging force	kN	363
斗杆挖掘力 Arm crowd force	kN	300
最大牵引力 Maximum traction	kN	485

液压系统 Hydraulic system		
主泵 Main pump	/	2个柱塞泵 Plunger pumps
主泵额定流量 Rated flow of main pump	L/min	2 × 450
主安全阀压力 Pressure of prime valve	MPa	31.4/34.3
行走系统压力 Pressure of travel system	MPa	34.3
回转系统压力 Pressure of swing system	MPa	28.5
先导系统压力 Pressure of pilot system	MPa	3.9

油类容量 Oil Capacity		
燃油箱容量 Fuel tank capacity	L	825
液压油箱容量 Hydraulic tank capacity	L	500
发动机油容量 Engine oil capacity	L	45

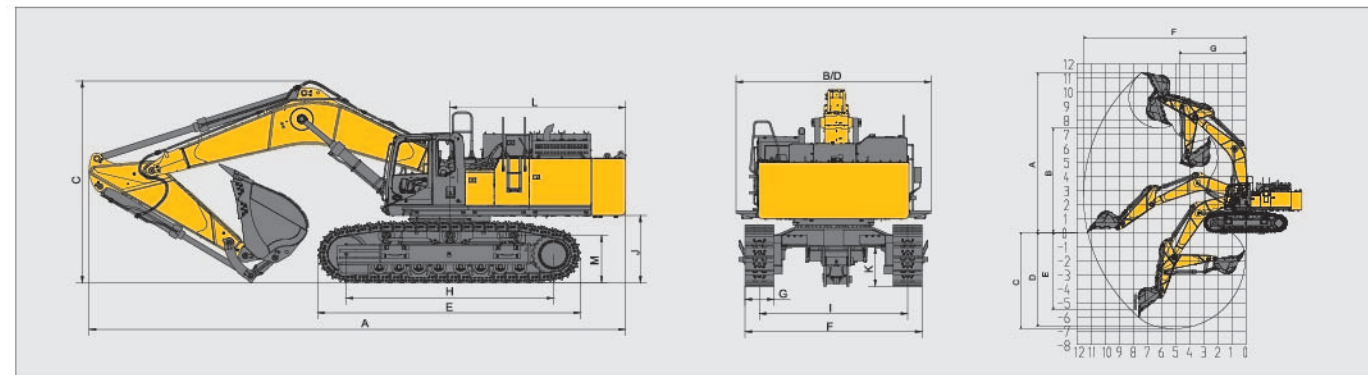
型号 Model	单位 UMO	参数 Parameters
----------	--------	---------------

外形尺寸 Appearance size		
A 总长 Overall length	mm	12130
B 总宽 Overall width	mm	4410
C 总高 Overall height	mm	4700
D 转台宽度 Width of platform	mm	3470
E 履带长度 Length of crawler	mm	5875
F 底盘总宽 Overall width of chassis	mm	4370
G 标准履带板宽度 Width of crawler	mm	650
H 履带轴距 Track length on ground	mm	4700
I 轨距 Crawler gauge	mm	2750/3410
J 配重离地间隙 Clearance under counterweight	mm	1565
K 最低离地间隙 Min. ground clearance	mm	853
L 尾部回转半径 Min. tail swing radius	mm	4090
M 履带高度 Height of crawler	mm	1420

作业范围 Working scope		
A 最大挖掘高度 Max. digging height	mm	11350
B 最大卸载高度 Max. dumping height	mm	7370
C 最大挖掘深度 Max. digging depth	mm	6900
D 8英尺水平挖掘深度 8-inch horizontal plane digging depth	mm	6750
E 最大垂直挖掘深度 Max. vertical wall digging depth	mm	5500
F 最大挖掘半径 Max. digging reach	mm	11580
G 最小回转半径 Min. swing radius	mm	4750

标配 Standard		
动臂长度 Length of boom	mm	6600
斗杆长度 Length of arm	mm	2900
铲斗容量 Bucket capacity	m <sup>3</sup>	4

选配 Option		
动臂长度 Length of boom	mm	7300
斗杆长度 Length of arm	mm	3500
铲斗容量 Bucket capacity	m <sup>3</sup>	2.4 (松土 Soft soil) 2.8 (岩石 Rock)
	m <sup>3</sup>	3.1 (岩石 Rock) 3.5 (岩石 Rock)
	m <sup>3</sup>	3.8 (加强 Strength) 4.6 (土方 Soil)



材料和规格可随时改变，恕不另行通知。  
Materials and specifications in the catalogue are subject to change at anytime without notice.

# XE750G矿用挖掘机 MINING EXCAVATOR



## 主要参数/ Main Specifications

型号 Model	单位 UMO	参数 Parameters
操作重量 Operation Weight	kg	75000
铲斗容量 Bucket Capacity	m <sup>3</sup>	3.8-5.3

发动机 Engine		
发动机型号 Model	/	2506J
直喷 Direct injection	/	√
4冲程 Four strokes	/	√
水冷 Water cooling	/	√
涡轮增压 Turbo-charging	/	√
空空中冷 Air to air intercooler	/	√
缸数 No. of cylinders	/	6
额定输出功率/转速 Output power	kw/rpm	403/2100
最大扭矩/转速 torque/speed	N.m/rpm	2472/1400
排量 Displacement	L	15.2

主要性能 Main performance		
行驶速度(高/低) Travel speed (H/L)	km/h	4.1/2.8
回转速度 Rotating speed	r/min	7
爬坡能力 Gradeability	°	35°
接地比压 Ground pressure	kPa	110
铲斗挖掘力 Bucket digging force	kN	390
斗杆挖掘力 Arm crowd force	kN	332
最大牵引力 Maximum traction	kN	575

液压系统 Hydraulic system		
主泵 Main pump	/	2个柱塞泵 Plunger pumps
主泵额定流量 Rated flow of main pump	L/min	2 × 450
主安全阀压力 Pressure of prime valve	MPa	35
行走系统压力 Pressure of travel system	MPa	35
回转系统压力 Pressure of swing system	MPa	32
先导系统压力 Pressure of pilot system	MPa	3.9

油类容量 Oil Capacity		
燃油箱容量 Fuel tank capacity	L	925
液压油箱容量 Hydraulic tank capacity	L	500
发动机油容量 Engine oil capacity	L	67

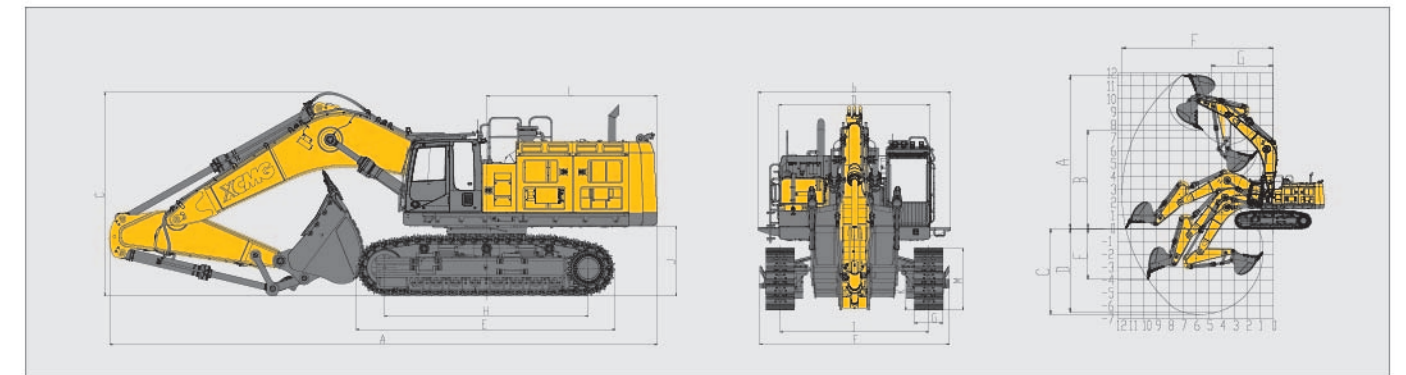
型号 Model	单位 UMO	参数 Parameters
----------	--------	---------------

外形尺寸 Appearance size		
A 总长 Overall length	mm	12600
B 总宽 Overall width	mm	4420
C 总高 Overall height	mm	4690
D 转台宽度 Width of platform	mm	3470
E 履带长度 Length of crawler	mm	5955
F 底盘总宽 Overall width of chassis	mm	4360
G 标准履带板宽度 Width of crawler	mm	650
H 履带轴距 Track length on ground	mm	4691
I 轨距 Crawler gauge	mm	2750/3410
J 配重离地间隙 Clearance under counterweight	mm	1610
K 最低离地间隙 Min. ground clearance	mm	850
L 尾部回转半径 Min. tail swing radius	mm	4015
M 履带高度 Height of crawler	mm	1420

作业范围 Working scope		
A 最大挖掘高度 Max. digging height	mm	11830
B 最大卸载高度 Max. dumping height	mm	7600
C 最大挖掘深度 Max. digging depth	mm	6660
D 8英尺水平挖掘深度 8-inch horizontal plane digging depth	mm	6500
E 最大垂直挖掘深度 Max. vertical wall digging depth	mm	3950
F 最大挖掘半径 Max. digging reach	mm	11690
G 最小回转半径 Min. swing radius	mm	4810

标配 Standard		
动臂长度 Length of boom	mm	7000
斗杆长度 Length of arm	mm	2570
铲斗容量 Bucket capacity	m <sup>3</sup>	5

选配 Option		
斗杆长度 Length of arm	mm	3000
	m <sup>3</sup>	3.8 (岩石 Rock)
	m <sup>3</sup>	4.0 (岩石 Rock)
铲斗容量 Bucket capacity	m <sup>3</sup>	4.6 (岩石 Rock) 5.3 (加强 Strength)



材料和规格可随时改变，恕不另行通知。  
Materials and specifications in the catalogue are subject to change at anytime without notice.



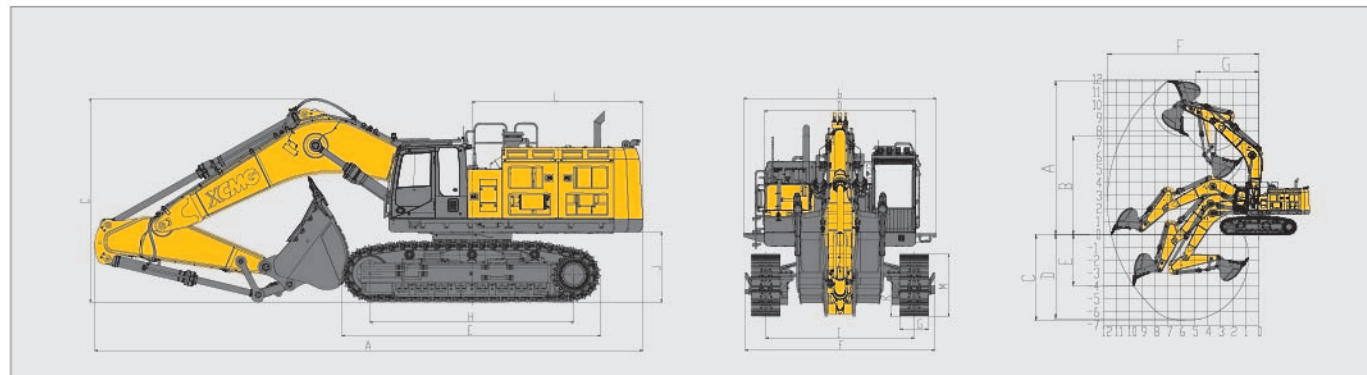
# XE800D矿用挖掘机 MINING EXCAVATOR



## 主要参数/ Main Specifications

型号 Model	单位 UOM	参数 Parameters
操作重量 Operation Weight	kg	78000
铲斗容量 Bucket Capacity	m³	3.8-5.6
<b>发动机 Engine</b>		
发动机型号 Model	/	2506D
直喷 Direct injection	/	√
4冲程 Four strokes	/	√
水冷 Water cooling	/	√
涡轮增压 Turbo-charging	/	√
空空中冷 Air to air intercooler	/	√
缸数 No. of cylinders	/	6
额定输出功率/转速 Output power	kw/rpm	403/2100
最大扭矩/转速 Torque/Speed	N.m	2466/1400
排量 Displacement	L	15.2
<b>主要性能 Main performance</b>		
行驶速度(高/低) Travel speed (H/L)	km/h	4.1/2.8
回转速度 Rotating speed	r/min	7
爬坡能力 Gradeability	°	35°
接地比压 Ground pressure	kPa	113
铲斗挖掘力 Bucket digging force	kN	390
斗杆挖掘力 Arm crowd force	kN	332
最大牵引力 Maximum traction	kN	575
<b>液压系统 Hydraulic system</b>		
主泵 Main pump	/	2个柱塞泵 Plunger pumps
主泵额定流量 Rated flow of main pump	L/min	2 × 450
主安全阀压力 Pressure of prime valve	MPa	35
行走系统压力 Pressure of travel system	MPa	35
回转系统压力 Pressure of swing system	MPa	32
先导系统压力 Pressure of pilot system	MPa	3.9
<b>油类容量 Oil capacity</b>		
燃油箱容量 Fuel tank capacity	L	925
液压油箱容量 Hydraulic tank capacity	L	500
发动机油容量 Engine oil capacity	L	67

型号 Model	单位 UOM	参数 Parameters
<b>外形尺寸 Outline dimension</b>		
A 总长 Overall length	mm	12600
B 总宽 Overall width	mm	4420
C 总高 Overall height	mm	4690
D 转台宽度 Width of platform	mm	3470
E 履带长度 Length of crawler	mm	5955
F 底盘总宽 Overall width of chassis	mm	4360
G 标准履带板宽度 Width of crawler	mm	650
H 履带轴距 Track length on ground	mm	4700
I 轨距 Crawler gauge	mm	2750/3410
J 配重离地间隙 Clearance under counterweight	mm	1610
K 最低离地间隙 Min. ground clearance	mm	850
L 尾部回转半径 Min. tail swing radius	mm	4015
M 履带高度 Height of crawler	mm	1420
<b>作业范围 Working scope</b>		
A 最大挖掘高度 Max. digging height	mm	11830
B 最大卸载高度 Max. dumping height	mm	7600
C 最大挖掘深度 Max. digging depth	mm	6660
D 8英尺水平面挖掘深度 8-inch horizontal plane digging depth	mm	6500
E 最大垂直挖掘深度 Max. vertical wall digging depth	mm	3950
F 最大挖掘半径 Max. digging reach	mm	11690
G 最小回转半径 Min. swing radius	mm	4810
<b>标配 Standard</b>		
动臂长度 Length of boom	mm	7000
斗杆长度 Length of arm	mm	2570
铲斗容量 Bucket capacity	m³	5.2
<b>选配 Option</b>		
斗杆长度 Length of arm	mm	3000
斗斗容量 Bucket capacity	m³	3.8 (岩石 Rock) 4.0 (岩石 Rock)
	m³	4.6 (岩石 Rock)
	m³	5.0 (岩石 Rock) 5.6 (加强 Strength)



材料和规格可随时改变，恕不另行通知。  
Materials and specifications in the catalogue are subject to change at anytime without notice.

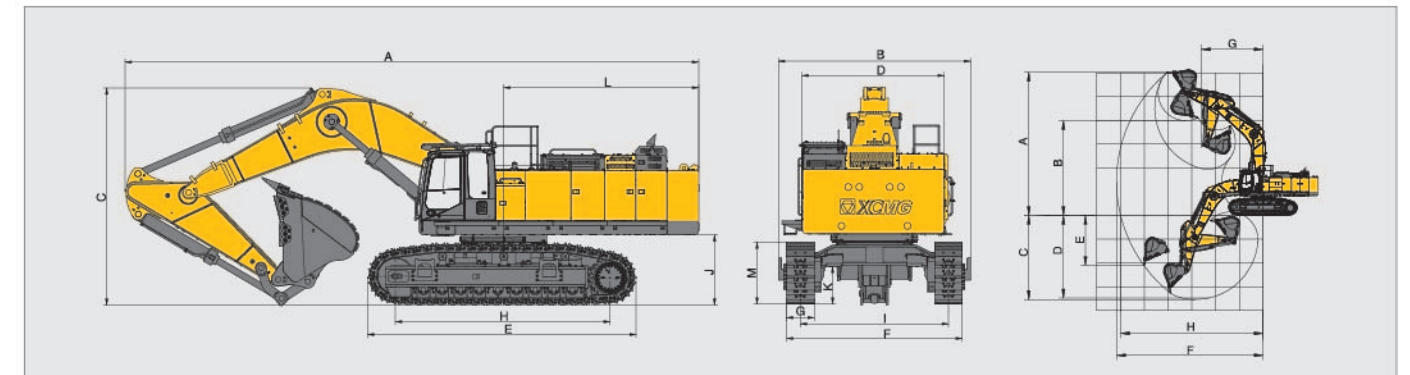
# XE900D矿用挖掘机 MINING EXCAVATOR



## 主要参数/ Main Specifications

型号 Model	单位 UOM	参数 Parameters
操作重量 Operation Weight	kg	89600
铲斗容量 Bucket Capacity	m³	3.5-6.0
<b>发动机 Engine</b>		
发动机型号 Model	/	QSX15
直喷 Direct injection	/	√
4冲程 Four strokes	/	√
水冷 Water cooling	/	√
涡轮增压 Turbo-charging	/	√
空空中冷 Air to air intercooler	/	√
缸数 No. of cylinders	/	6
额定输出功率/转速 Output power	kw/rpm	399/2100
最大扭矩/转速 Torque/Speed	N.m	2539/1400
排量 Displacement	L	15.0
<b>主要性能 Main performance</b>		
行驶速度(高/低) Travel speed (H/L)	km/h	4.2/2.8
回转速度 Rotating speed	r/min	6.3
爬坡能力 Gradeability	°	35°
接地比压 Ground pressure	kPa	120.9
铲斗挖掘力 Bucket digging force	kN	480
斗杆挖掘力 Arm crowd force	kN	370
最大牵引力 Maximum traction	kN	620
<b>液压系统 Hydraulic system</b>		
主泵 Main pump	/	2个柱塞泵 Plunger pumps
主泵额定流量 Rated flow of main pump	L/min	2 × 549
主安全阀压力 Pressure of prime valve	MPa	31.4/34.3
行走系统压力 Pressure of travel system	MPa	34.3
回转系统压力 Pressure of swing system	MPa	24.5
先导系统压力 Pressure of pilot system	MPa	3.9
<b>油类容量 Oil capacity</b>		
燃油箱容量 Fuel tank capacity	L	1230
液压油箱容量 Hydraulic tank capacity	L	755
发动机油容量 Engine oil capacity	L	48

型号 Model	单位 UOM	参数 Parameters
<b>外形尺寸 Outline dimension</b>		
A 总长 Overall length	mm	13570
B 总宽 Overall width	mm	4545
C 总高 Overall height	mm	5380
D 转台宽度 Width of platform	mm	3370
E 履带长度 Length of crawler	mm	6365
F 底盘总宽 Overall width of chassis	mm	4150
G 标准履带板宽度 Width of crawler	mm	650
H 履带轴距 Track length on ground	mm	5090
I 轨距 Crawler gauge	mm	2960/3500
J 配重离地间隙 Clearance under counterweight	mm	1605
K 最低离地间隙 Min. ground clearance	mm	850
L 尾部回转半径 Min. tail swing radius	mm	4700
M 履带高度 Height of crawler	mm	1470
<b>作业范围 Working scope</b>		
A 最大挖掘高度 Max. digging height	mm	12060
B 最大卸载高度 Max. dumping height	mm	8070
C 最大挖掘深度 Max. digging depth	mm	7250
D 8英尺水平面挖掘深度 8-inch horizontal plane digging depth	mm	7100
E 最大垂直挖掘深度 Max. vertical wall digging depth	mm	4200
F 最大挖掘半径 Max. digging reach	mm	12330
G 最小回转半径 Min. swing radius	mm	5200
H 最大地面挖掘半径 Max. ground digging reach	mm	12000
<b>标配 Standard</b>		
动臂长度 Length of boom	mm	7100
斗杆长度 Length of arm	mm	2945
铲斗容量 Bucket capacity	m³	5.4
<b>选配 Option</b>		
斗斗容量 Bucket capacity	m³	3.5 (冻土 Frozen) 3.5 (岩石 Rock)
	m³	4.0 (岩石 Rock) 4.6 (岩石 Rock)
	m³	5.4 (重载 Heavy-duty) 6.0 (土方 Soil)



材料和规格可随时改变，恕不另行通知。  
Materials and specifications in the catalogue are subject to change at anytime without notice.



# XE950D矿用挖掘机 MINING EXCAVATOR



## 主要参数/ Main Specifications

型号 Model	单位 UOM	参数 Parameters
操作重量 Operation Weight	kg	93000
铲斗容量 Bucket Capacity	m³	4.6-7

### 发动机 Engine

发动机型号 Model	/	QSK19
直喷 Direct injection	/	√
4冲程 Four strokes	/	√
水冷 Water cooling	/	√
涡轮增压 Turbo-charging	/	√
空空中冷 Air to air intercooler	/	√
缸数 No. of cylinders	/	6
额定输出功率/转速 Output power	kw/rpm	522/2000
最大扭矩/转速 Torque/Speed	N.m	2983/1500
排量 Displacement	L	18.1

### 主要性能 Main performance

行驶速度(高/低) Travel speed (H/L)	km/h	4.2/2.8
回转速度 Rotating speed	r/min	6.4
爬坡能力 Gradeability	°	35°
接地比压 Ground pressure	kPa	127
铲斗挖掘力 Bucket digging force	kN	460
斗杆挖掘力 Arm crowd force	kN	350
最大牵引力 Maximum traction	kN	618

### 液压系统 Hydraulic system

主泵 Main pump	/	2个柱塞泵 Plunger pumps
主泵额定流量 Rated flow of main pump	L/min	2 × 549
主安全阀压力 Pressure of prime valve	MPa	34.3
行走系统压力 Pressure of travel system	MPa	34.3
回转系统压力 Pressure of swing system	MPa	29
先导系统压力 Pressure of pilot system	MPa	3.9

### 油类容量 Oil capacity

燃油箱容量 Fuel tank capacity	L	1480
液压油箱容量 Hydraulic tank capacity	L	755
发动机油容量 Engine oil capacity	L	60

型号 Model	单位 UOM	参数 Parameters
----------	--------	---------------

### 外形尺寸 Outline dimension

A 总长 Overall length	mm	13880
B 总宽 Overall width	mm	4545
C 总高 Overall height	mm	5180
D 转台宽度 Width of platform	mm	3510
E 履带长度 Length of crawler	mm	6365
F 底盘总宽 Overall width of chassis	mm	4150
G 标准履带板宽度 Width of crawler	mm	650
H 履带轴距 Track length on ground	mm	5090
I 轨距 Crawler gauge	mm	2960/3500
J 配重离地间隙 Clearance under counterweight	mm	1650
K 最低离地间隙 Min. ground clearance	mm	870
L 尾部回转半径 Min. tail swing radius	mm	4700
M 履带高度 Height of crawler	mm	1470

### 作业范围 Working scope

A 最大挖掘高度 Max. digging height	mm	12680
B 最大卸载高度 Max. dumping height	mm	8070
C 最大挖掘深度 Max. digging depth	mm	7990
D 8英尺水平面挖掘深度 8-inch horizontal plane digging depth	mm	7030
E 最大垂直挖掘深度 Max. vertical wall digging depth	mm	4550
F 最大挖掘半径 Max. digging reach	mm	12660
G 最小回转半径 Min. swing radius	mm	5020

### 标配 Standard

动臂长度 Length of boom	mm	7250
斗杆长度 Length of arm	mm	2925
铲斗容量 Bucket capacity	m³	6

### 选配 Option

斗杆长度 Length of arm	mm	3400
铲斗容量 Bucket capacity	m³	4.6 (岩石 Rock) 5.4 (岩石 Rock) 6.0 (岩石 Rock) 6.5 (岩石 Rock) 7.0 (岩石 Rock)

# XE950DA矿用挖掘机 MINING EXCAVATOR



## 主要参数/ Main Specifications

型号 Model	单位 UOM	参数 Parameters
操作重量 Operation Weight	kg	91000
铲斗容量 Bucket Capacity	m³	4.6-7.0

### 发动机 Engine

发动机型号 Model	/	2806D
电喷 Electronic fuel injection	/	√
4冲程 Four strokes	/	√
水冷 Water cooling	/	√
涡轮增压 Turbo-charging	/	√
空空中冷 Air to air intercooler	/	√
缸数 No. of cylinders	/	6
额定输出功率/转速 Output power	kw/rpm	447.5/2100
最大扭矩/转速 Torque/Speed	N.m/rpm	2742/1400
排量 Displacement	L	18.1

### 主要性能 Main performance

行驶速度(高/低) Travel speed (H/L)	km/h	4.0/2.4
回转速度 Rotating speed	r/min	6.2
爬坡能力 Gradeability	°	35
接地比压 Ground pressure	kPa	124
铲斗挖掘力 Bucket digging force	kN	463
斗杆挖掘力 Arm crowd force	kN	370
最大牵引力 Maximum traction	kN	636

### 液压系统 Hydraulic system

主泵 Main pump	/	2个柱塞泵
主泵额定流量 Rated flow of main pump	L/min	2X476
主安全阀压力 Pressure of prime valve	MPa	35
行走系统压力 Pressure of travel system	MPa	35
回转系统压力 Pressure of swing system	MPa	29
先导系统压力 Pressure of pilot system	MPa	3.9

### 油类容量 Oil Capacity

燃油箱容量 Fuel tank capacity	L	1200
液压油箱容量 Hydraulic tank capacity	L	540
发动机油容量 Engine oil capacity	L	64

型号 Model	单位 UOM	参数 Parameters
----------	--------	---------------

### 外形尺寸 Appearance size

A 总长 Overall length	mm	13655
B 总宽 Overall width	mm	4545
C 总高 Overall height	mm	4980
D 转台宽度 Width of platform	mm	3490
E 履带长度 Length of crawler	mm	6365
F 底盘总宽 Overall width of chassis	mm	4150
G 标准履带板宽度 Width of crawler	mm	650
H 履带轴距 Track length on ground	mm	5090
I 轨距 Crawler gauge	mm	2960/3500
J 配重离地间隙 Clearance under counterweight	mm	1650
K 最低离地间隙 Min. ground clearance	mm	870
L 尾部回转半径 Min. tail swing radius	mm	4700
M 履带高度 Height of crawler	mm	1470

### 作业范围 Working scope

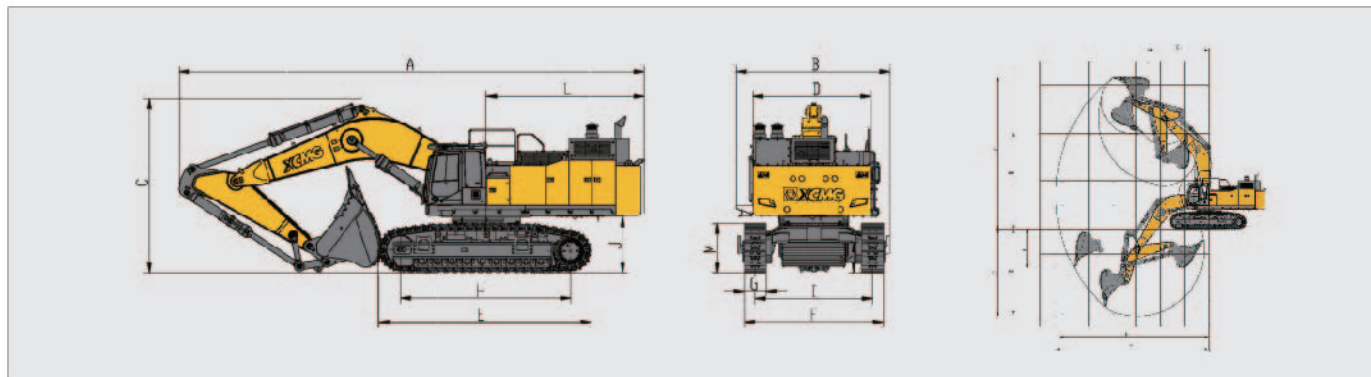
A 最大挖掘高度 Max. digging height	mm	12680
B 最大卸载高度 Max. dumping height	mm	7990
C 最大挖掘深度 Max. digging depth	mm	7170
D 8英尺水平面挖掘深度 8-inch horizontal plane digging depth	mm	7030
E 最大垂直挖掘深度 Max. vertical wall digging depth	mm	4550
F 最大挖掘半径 Max. digging reach	mm	12660
G 最小回转半径 Min. swing radius	mm	5020

### 标配 Standard

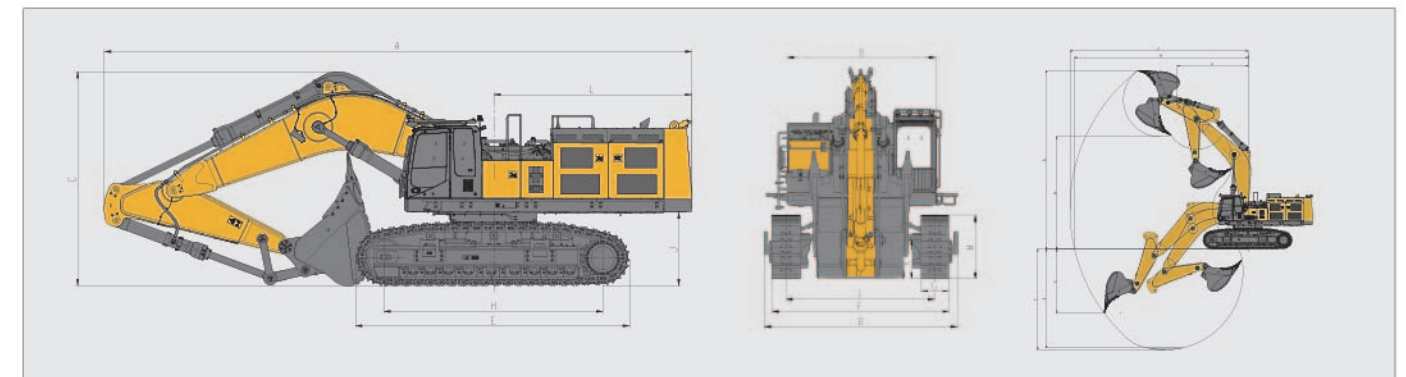
动臂长度 Length of boom	mm	7250
斗杆长度 Length of arm	mm	2925
铲斗容量 Bucket capacity	m³	6

### 选配 Option

动臂长度 Length of boom	mm	/
斗杆长度 Length of arm	mm	3400
铲斗容量 Bucket capacity	m³	4.6 (岩石) 5.4 (岩石)
	m³	6.0 (岩石)
	m³	6.5 (土方) 7.0 (土方)



材料和规格可随时改变，恕不另行通知。  
Materials and specifications in the catalogue are subject to change at anytime without notice.



材料和规格可随时改变，恕不另行通知。  
Materials and specifications in the catalogue are subject to change at anytime without notice.



# XE950G矿用挖掘机 MINING EXCAVATOR



## 主要参数/Main Specifications

型号 Model	单位 UMO	参数 Parameters
操作重量 Operation Weight	kg	91000
铲斗容量 Bucket Capacity	m <sup>3</sup>	4.6-7.0

### 发动机 Engine

发动机型号 Model	/	2806EA
直喷 Direct injection	/	√
4冲程 Four strokes	/	√
水冷 Water cooling	/	√
涡轮增压 Turbo-charging	/	√
空空中冷 Air to air intercooler	/	√
缸数 No. of cylinders	/	6
发动机额定功率 Output power	kw/rpm	447.5/2000
最大扭矩/转速 Torque/Speed	N.m/rpm	2811/1300
排量 Displacement	L	18.1

### 主要性能 Main performance

行走速度 Travel speed	km/h	4.0/2.4
回转速度 Rotating speed	r/min	6.2
爬坡能力 Gradeability	°	35
接地比压 Ground pressure	kPa	124
铲斗挖掘力 Bucket digging force	kN	463
斗杆挖掘力 Arm crowd force	kN	370
最大牵引力 Maximum traction	kN	636

### 液压系统 Hydraulic system

主泵 Main pump	/	2个柱塞泵 Plunger pumps
主泵额定流量 Rated flow of main pump	L/min	2 × 476
主安全阀压力 Pressure of prime valve	MPa	35
行走系统压力 Pressure of travel system	MPa	35
回转系统压力 Pressure of swing system	MPa	29
先导系统压力 Pressure of pilot system	MPa	3.9

### 油类容量 Oil Capacity

燃油箱容积 Fuel tank capacity	L	1200
液压油箱容积 Hydraulic tank capacity	L	540
发动机机油容量 Engine oil capacity	L	64

型号 Model	单位 UMO	参数 Parameters
----------	--------	---------------

### 外形尺寸 Appearance size

A 总长 Overall length	mm	13655
B 总宽 Overall width	mm	4545
C 总高 Overall height	mm	4980
D 转台宽度 Width of platform	mm	3490
E 履带长度 Length of crawler	mm	6365
F 底盘总宽 Overall width of chassis	mm	4150
G 履带宽度 Width of crawler	mm	650
H 履带轴距 Track length on ground	mm	5090
I 轨距 Crawler gauge	mm	2960/3500
J 配重离地间隙 Clearance under counterweight	mm	1650
K 最低离地间隙 Min. ground clearance	mm	870
L 尾部最小回转半径 Min. tail swing radius	mm	4700
M 履带高度 Height of crawler	mm	1470

### 作业范围 Working scope

A 最大挖掘高度 Max. digging height	mm	12680
B 最大卸载高度 Max. dumping height	mm	7990
C 最大挖掘深度 Max. digging depth	mm	7170
D 8英尺水平面挖掘深度 8-inch horizontal plane digging depth	mm	7030
E 最大垂直挖掘深度 Max. vertical wall digging depth	mm	4550
F 最大挖掘半径 Max. digging reach	mm	12660
G 最小回转半径 Min. swing radius	mm	5020

### 标配 Standard

动臂长度 Length of boom	mm	7250
斗杆长度 Length of arm	mm	2925
铲斗容量 Bucket capacity	m <sup>3</sup>	6

### 选配 Option

铲斗容量 Bucket capacity	mm	3400
	m <sup>3</sup>	4.6 (岩石 Rock)
	m <sup>3</sup>	5.4 (岩石 Rock)
	m <sup>3</sup>	6.0 (岩石 Rock)
铲斗容量 Bucket capacity	m <sup>3</sup>	6.5 (土方 Soil)
	m <sup>3</sup>	7.0 (土方 Soil)
	m <sup>3</sup>	7.0 (土方 Soil)

# XE1250矿用挖掘机 MINING EXCAVATOR



## 主要参数/Main Specifications

型号 Model	单位 UOM	参数 Parameters
操作重量 Operation Weight	kg	115000
铲斗容量 Bucket Capacity	m <sup>3</sup>	5.2-8.5

### 发动机 Engine

发动机型号 Model	/	QSK23
直喷 Direct injection	/	√
4冲程 Four strokes	/	√
水冷 Water cooling	/	√
涡轮增压 Turbo-charging	/	√
空空中冷 Air to air intercooler	/	√
缸数 No. of cylinders	/	6
额定输出功率/转速 Output power	kw/rpm	567/1800
最大扭矩/转速 Torque/Speed	N.m	3468/1350
排量 Displacement	L	23.15

### 主要性能 Main performance

行驶速度(高/低) Travel speed (H/L)	km/h	3.5/2.4
回转速度 Rotating speed	r/min	5.2
爬坡能力 Gradeability	°	30
接地比压 Ground pressure	kPa	143
铲斗挖掘力 Bucket digging force	kN	597
斗杆挖掘力 Arm crowd force	kN	470
最大牵引力 Maximum traction	kN	746

### 液压系统 Hydraulic system

主泵 Main pump	/	3个柱塞泵 Plunger pumps
主泵额定流量 Rated flow of main pump	L/min	3 × 531
主安全阀压力 Pressure of prime valve	MPa	34.3
行走系统压力 Pressure of travel system	MPa	34.3
回转系统压力 Pressure of swing system	MPa	28
先导系统压力 Pressure of pilot system	MPa	3.9

### 油类容量 Oil capacity

燃油箱容量 Fuel tank capacity	L	1460
液压油箱容量 Hydraulic tank capacity	L	640
发动机机油容量 Engine oil capacity	L	75

型号 Model	单位 UOM	参数 Parameters
----------	--------	---------------

### 外形尺寸 Outline dimension

A 总长 Overall length	mm	14610
B 总宽 Overall width	mm	5470
C 总高 Overall height	mm	6160
D 转台宽度 Width of platform	mm	3490
E 履带长度 Length of crawler	mm	6500
F 底盘总宽 Overall width of chassis	mm	4600
G 标准履带板宽度 Width of crawler	mm	700
H 履带轴距 Track length on ground	mm	5090
I 轨距 Crawler gauge	mm	3900
J 配重离地间隙 Clearance under counterweight	mm	1880
K 最低离地间隙 Min. ground clearance	mm	1070
L 尾部回转半径 Min. tail swing radius	mm	5090
M 履带高度 Height of crawler	mm	1710

### 作业范围 Working scope

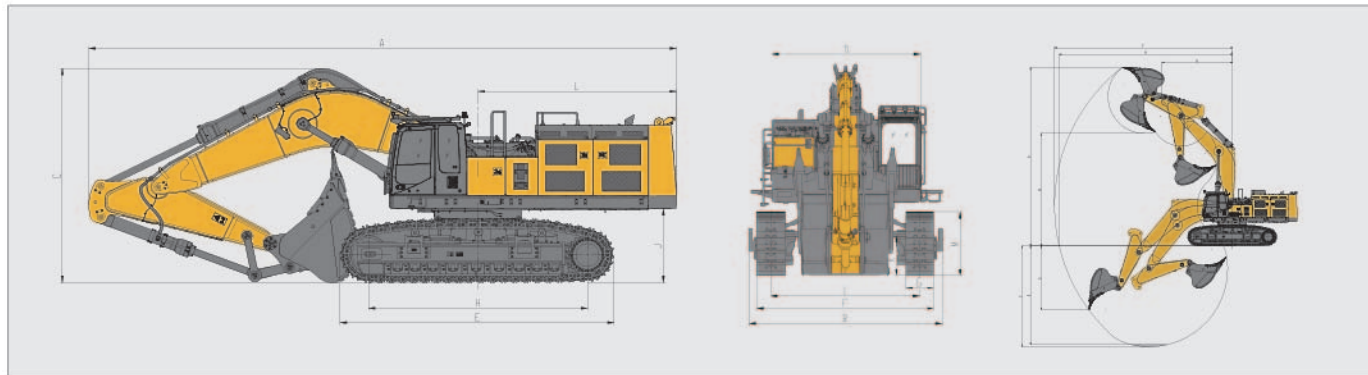
A 最大挖掘高度 Max. digging height	mm	12500
B 最大卸载高度 Max. dumping height	mm	7990
C 最大挖掘深度 Max. digging depth	mm	8110
D 8英尺水平面挖掘深度 8-inch horizontal plane digging depth	mm	7980
E 最大垂直挖掘深度 Max. vertical wall digging depth	mm	5390
F 最大挖掘半径 Max. digging reach	mm	13860
G 最小回转半径 Min. swing radius	mm	6770
H 最大地面挖掘半径 Max. ground digging reach	mm	13470

### 标配 Standard

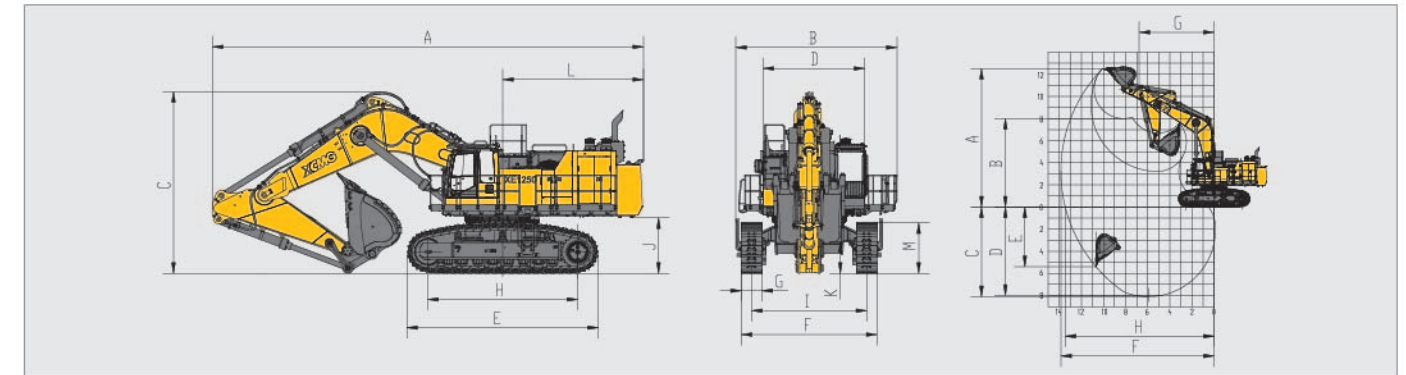
动臂长度 Length of boom	mm	7550
斗杆长度 Length of arm	mm	3400
铲斗容量 Bucket capacity	m <sup>3</sup>	7

### 选配 Option

动臂长度 Length of boom	mm	9000
斗杆长度 Length of arm	mm	3600
铲斗容量 Bucket capacity	m <sup>3</sup>	5.2-7.0 (岩石 Rock)
	m <sup>3</sup>	7.7 (土方 Soil) 8.5(土方 Soil)



材料和规格可随时改变，恕不另行通知。  
Materials and specifications in the catalogue are subject to change at anytime without notice.



材料和规格可随时改变，恕不另行通知。  
Materials and specifications in the catalogue are subject to change at anytime without notice.



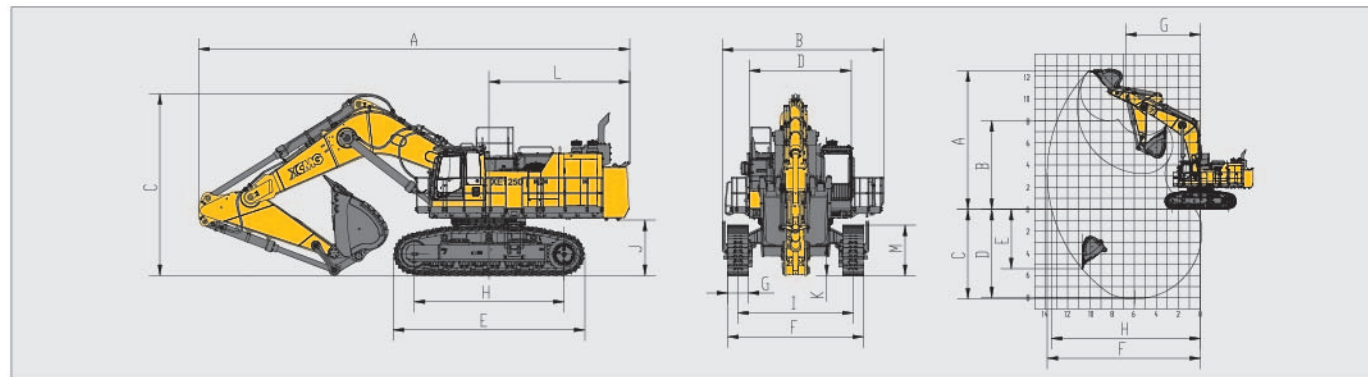
# XE1250G矿用挖掘机 MINING EXCAVATOR



## 主要参数/ Main Specifications

型号 Model	单位 UMO	参数 Parameters
操作重量 Operation Weight	kg	117000
铲斗容量 Bucket Capacity	m³	5.2-8.5
<b>发动机 Engine</b>		
发动机型号 Model	/	QSK23 T4
电喷 Electronic fuel injection	/	✓
4冲程 Four strokes	/	✓
水冷 Water cooling	/	✓
涡轮增压 Turbo-charging	/	✓
空空中冷 Air to air intercooler	/	✓
缸数 No. of cylinders	/	6
额定输出功率/转速 Output power	kw/rpm	567/1800
最大扭矩/转速 torque/speed	N.m/rpm	3468/1350
排量 Displacement	L	23.15
<b>主要性能 Main performance</b>		
行驶速度(高/低) Travel speed (H/L)	km/h	3.5/2.4
回转速度 Rotating speed	r/min	5.2
爬坡能力 Gradeability	°	30°
接地比压 Ground pressure	kPa	147
铲斗挖掘力 Bucket digging force	kN	597
斗杆挖掘力 Arm crowd force	kN	470
最大牵引力 Maximum traction	kN	746
<b>液压系统 Hydraulic system</b>		
主泵 Main pump	/	3个柱塞泵 Plunger pumps
主泵额定流量 Rated flow of main pump	L/min	3 × 531
主安全阀压力 Pressure of prime valve	MPa	34.3
行走系统压力 Pressure of travel system	MPa	34.3
回转系统压力 Pressure of swing system	MPa	28
先导系统压力 Pressure of pilot system	MPa	3.9
<b>油类容量 Oil Capacity</b>		
燃油箱容量 Fuel tank capacity	L	1460
液压油箱容量 Hydraulic tank capacity	L	640
发动机油容量 Engine oil capacity	L	75

型号 Model	单位 UMO	参数 Parameters
<b>外形尺寸 Appearance size</b>		
A 总长 Overall length	mm	14610
B 总宽 Overall width	mm	5540
C 总高 Overall height	mm	6160
D 转台宽度 Width of platform	mm	3490
E 履带长度 Length of crawler	mm	6500
F 底盘总宽 Overall width of chassis	mm	4600
G 标准履带板宽度 Width of crawler	mm	700
H 履带轴距 Track length on ground	mm	5090
I 轨距 Crawler gauge	mm	3900
J 配重离地间隙 Clearance under counterweight	mm	1880
K 最低离地间隙 Min. ground clearance	mm	1070
L 尾部回转半径 Min. tail swing radius	mm	5090
M 履带高度 Height of crawler	mm	1710
<b>作业范围 Working scope</b>		
A 最大挖掘高度 Max. digging height	mm	12500
B 最大卸载高度 Max. dumping height	mm	7990
C 最大挖掘深度 Max. digging depth	mm	8110
D 8英尺水平面挖掘深度 8-inch horizontal plane digging depth	mm	7980
E 最大垂直挖掘深度 Max. vertical wall digging depth	mm	5390
F 最大挖掘半径 Max. digging reach	mm	13860
G 最小回转半径 Min. swing radius	mm	6770
<b>标配 Standard</b>		
动臂长度 Length of boom	mm	7550
斗杆长度 Length of arm	mm	3400
铲斗容量 Bucket capacity	m³	7
<b>选配 Option</b>		
动臂长度 Length of boom	mm	9000
斗杆长度 Length of arm	mm	3600
铲斗容量 Bucket capacity	m³	5.2 (岩石 Rock)
	m³	6.0 (岩石 Rock)
	m³	7.7 (土方 Soil) 8.5 (土方 Soil)



材料和规格可随时改变，恕不另行通知。  
Materials and specifications in the catalogue are subject to change at anytime without notice.

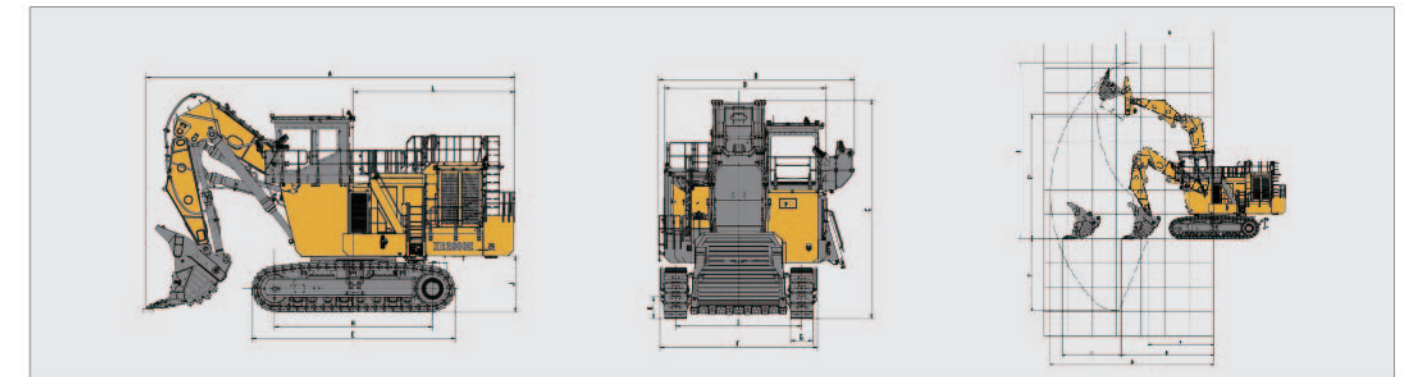
# XE2000E液压铲 HYDRAULIC EXCAVATOR



## 主要参数/ Main Specifications

型号 Model	单位 UMO	参数 Parameters
操作重量 Operation Weight	kg	192000
铲斗容量 Bucket Capacity	m³	10-12
<b>发动机 Engine</b>		
发动机型号 Model	/	XCMG-M400/610A
电喷 Electronic fuel injection	/	/
4冲程 Four strokes	/	/
水冷 Water cooling	/	/
涡轮增压 Turbo-charging	/	/
空空中冷 Air to air intercooler	/	/
缸数 No. of cylinders	/	/
额定输出功率/转速 Output power	kw/rpm	610/1480
最大扭矩/转速 torque/speed	N.m/rpm	3931
排量 Displacement	L	/
<b>主要性能 Main performance</b>		
行驶速度(高/低) Travel speed (H/L)	km/h	2.7/1.9
回转速度 Rotating speed	r/min	4.7
爬坡能力 Gradeability	°	30°
接地比压 Ground pressure	kPa	181
铲斗挖掘力 Bucket digging force	kN	685
斗杆挖掘力 Arm crowd force	kN	790
最大牵引力 Maximum traction	kN	1014
<b>液压系统 Hydraulic system</b>		
主泵 Main pump	/	6个柱塞泵 Plunger pumps
主泵额定流量 Rated flow of main pump	L/min	6 × 335
主安全阀压力 Pressure of prime valve	MPa	29.4/31.4
行走系统压力 Pressure of travel system	MPa	29.4
回转系统压力 Pressure of swing system	MPa	29.4
先导系统压力 Pressure of pilot system	MPa	3.9
<b>油类容量 Oil Capacity</b>		
燃油箱容量 Fuel tank capacity	L	/
液压油箱容量 Hydraulic tank capacity	L	1300
发动机油容量 Engine oil capacity	L	/

型号 Model	单位 UMO	参数 Parameters
<b>外形尺寸 Appearance size</b>		
A 总长 Overall length	mm	13620
B 总宽 Overall width	mm	7155
C 总高 Overall height	mm	7980
D 转台宽度 Width of platform	mm	5600
E 履带长度 Length of crawler	mm	7440
F 底盘总宽 Overall width of chassis	mm	5630
G 标准履带板宽度 Width of crawler	mm	810
H 履带轴距 Track length on ground	mm	5775
I 轨距 Crawler gauge	mm	4600
J 配重离地间隙 Clearance under counterweight	mm	2050
K 最低离地间隙 Min. ground clearance	mm	800
L 尾部回转半径 Min. tail swing radius	mm	6040
M 履带高度 Height of crawler	mm	1850
<b>作业范围 Working scope</b>		
A 地面最小挖掘距离 Min. digging distance	mm	5400
B 最小水平堆积距离 Min. level crowding distance	mm	7570
C 地面平推距离 Level crowding distance	mm	4890
D 最大挖掘半径 Max. digging reach	mm	13420
E 最大切削高度 Max. cutting height	mm	14450
E' 最大卸载高度 Max. dumping height	mm	10180
F 最大挖掘深度 Max. digging depth	mm	5945
G 最大卸载高时工作半径 Working radius at max. dumping height	mm	7280
T 铲斗最大开启宽度 Max. bucket opening width	mm	2170
<b>标配 Standard</b>		
动臂长度 Length of boom	mm	6300
斗杆长度 Length of arm	mm	4400
铲斗容量 Bucket capacity	m³	12
<b>选配 Option</b>		
动臂长度 Length of boom	mm	/
斗杆长度 Length of arm	mm	/
铲斗容量 Bucket capacity	m³	10



材料和规格可随时改变，恕不另行通知。  
Materials and specifications in the catalogue are subject to change at anytime without notice.



# XE2000液压铲 HYDRAULIC EXCAVATOR



## 主要参数/ Main Specifications

型号 Model	单位 UOM	参数 Parameters
操作重量 Operation Weight	kg	192000
铲斗容量 Bucket Capacity	m³	10-14

### 发动机 Engine

发动机型号 Model	/	QSK38
直喷 Direct injection	/	✓
4冲程 Four strokes	/	✓
水冷 Water cooling	/	✓
涡轮增压 Turbo-charging	/	✓
空中中冷 Air to air intercooler	/	低温中冷器 (LTA)
缸数 No. of cylinders	/	6
额定输出功率/转速 Output power	kw/rpm	810/1800
最大扭矩/转速 Torque/Speed	N.m	4869/1350
排量 Displacement	L	37.8

### 主要性能 Main performance

行驶速度(高/低) Travel speed (H/L)	km/h	2.7/1.9
回转速度 Rotating speed	r/min	4.7
爬坡能力 Gradeability	°	30°
接地比压 Ground pressure	kPa	181
铲斗挖掘力 Bucket digging force	kN	672
斗杆挖掘力 Arm crowd force	kN	620
最大牵引力 Maximum traction	kN	1149

### 液压系统 Hydraulic system

主泵 Main pump	/	4个柱塞泵 Plunger pumps
主泵额定流量 Rated flow of main pump	L/min	6 × 335
主安全阀压力 Pressure of prime valve	MPa	29.4/31.4
行走系统压力 Pressure of travel system	MPa	29.4
回转系统压力 Pressure of swing system	MPa	29.4
先导系统压力 Pressure of pilot system	MPa	3.9

### 油类容量 Oil capacity

燃油箱容量 Fuel tank capacity	L	4000
液压油箱容量 Hydraulic tank capacity	L	1300
发动机油容量 Engine oil capacity	L	166

型号 Model	单位 UOM	参数 Parameters
----------	--------	---------------

### 外形尺寸 Outline dimension

A 总长 Overall length	mm	16895
B 总宽 Overall width	mm	6795
C 总高 Overall height	mm	7320
D 转台宽度 Width of platform	mm	5600
E 履带长度 Length of crawler	mm	7440
F 底盘总宽 Overall width of chassis	mm	5630
G 标准履带板宽度 Width of crawler	mm	800
H 履带轴距 Track length on ground	mm	5775
I 轨距 Crawler gauge	mm	4600
J 配重高地间隙 Clearance under counterweight	mm	2050
K 最低离地间隙 Min. ground clearance	mm	800
L 尾部回转半径 Min. tail swing radius	mm	6040
M 履带高度 Height of crawler	mm	1850

### 作业范围 Working scope

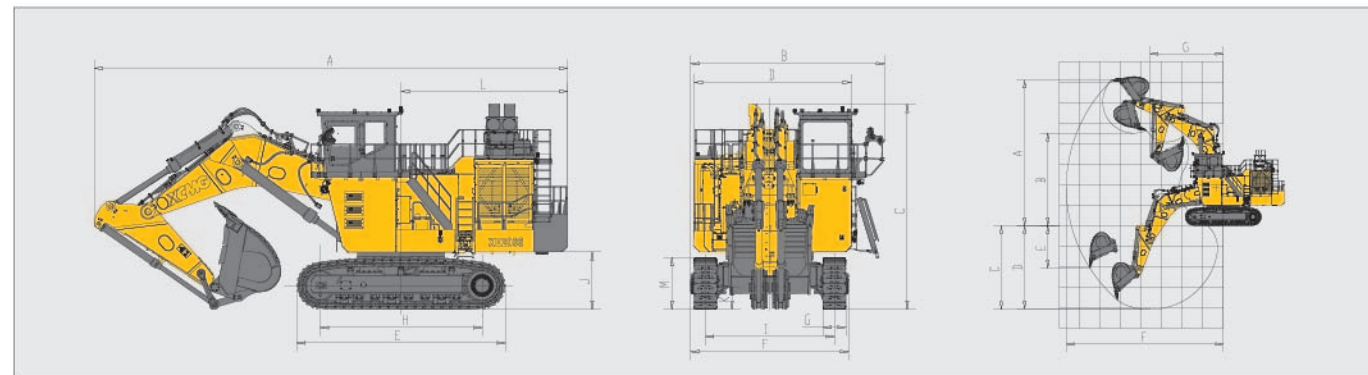
A 最大挖掘高度 Max. digging height	mm	14190
B 最大卸载高度 Max. dumping height	mm	9035
C 最大挖掘深度 Max. digging depth	mm	8185
D 8英尺水平面挖掘深度 8-inch horizontal plane digging depth	mm	8060
E 最大垂直挖掘深度 Max. vertical wall digging depth	mm	4120
F 最大挖掘半径 Max. digging reach	mm	15325
G 最小回转半径 Min. swing radius	mm	7130

### 标配 Standard

动臂长度 Length of boom	mm	8300
斗杆长度 Length of arm	mm	3600
铲斗容量 Bucket capacity	m³	12

### 选配 Option

动臂长度 Length of boom	mm	8700
斗杆长度 Length of arm	mm	4000 5500
铲斗容量 Bucket capacity	m³	10 (岩石 Rock) 14 (岩石 coal)



材料和规格可随时改变，恕不另行通知。  
Materials and specifications in the catalogue are subject to change at anytime without notice.

# XE2800E液压铲 HYDRAULIC EXCAVATOR



## 主要参数/ Main Specifications

型号 Model	单位 UMO	参数 Parameters
操作重量 Operation Weight	kg	285000
铲斗容量 Bucket Capacity	m³	12.0-17.0

### 发动机 Engine

发动机型号 Model	/	XCMG-M500-1050A
电喷 Electronic fuel injection	/	/
4冲程 Four strokes	/	/
水冷 Water cooling	/	/
涡轮增压 Turbo-charging	/	/
空中中冷 Air to air intercooler	/	/
缸数 No. of cylinders	/	/
额定输出功率/转速 Output power	kw/rpm	1050/1485
最大扭矩/转速 torque/speed	N.m/rpm	11480/1350
排量 Displacement	L	/

### 主要性能 Main performance

行驶速度(高/低) Travel speed (H/L)	km/h	2.0/1.5
回转速度 Rotating speed	r/min	4
爬坡能力 Gradeability	°	30°
接地比压 Ground pressure	kPa	199
铲斗挖掘力 Bucket digging force	kN	935
斗杆挖掘力 Arm crowd force	kN	1200
最大牵引力 Maximum traction	kN	1670

### 液压系统 Hydraulic system

主泵 Main pump	/	4个柱塞泵 Plunger pumps
主泵额定流量 Rated flow of main pump	L/min	4x750
主安全阀压力 Pressure of prime valve	MPa	30
行走系统压力 Pressure of travel system	MPa	32
回转系统压力 Pressure of swing system	MPa	35
先导系统压力 Pressure of pilot system	MPa	6

### 油类容量 Oil Capacity

燃油箱容量 Fuel tank capacity	L	/
液压油箱容量 Hydraulic tank capacity	L	2500
发动机油容量 Engine oil capacity	L	/

型号 Model	单位 UMO	参数 Parameters
----------	--------	---------------

### 外形尺寸 Appearance size

A 总长 Overall length	mm	19976
B 总宽 Overall width	mm	8539
C 总高 Overall height	mm	7481
D 转台宽度 Width of platform	mm	6180
E 履带长度 Length of crawler	mm	8108
F 底盘总宽 Overall width of chassis	mm	6340
G 标准履带板宽度 Width of crawler	mm	1000
H 履带轴距 Track length on ground	mm	6420
I 轨距 Crawler gauge	mm	4900
J 配重高地间隙 Clearance under counterweight	mm	2247
K 最低离地间隙 Min. ground clearance	mm	827
L 尾部回转半径 Min. tail swing radius	mm	6640
M 履带高度 Height of crawler	mm	2165

### 作业范围 Working scope

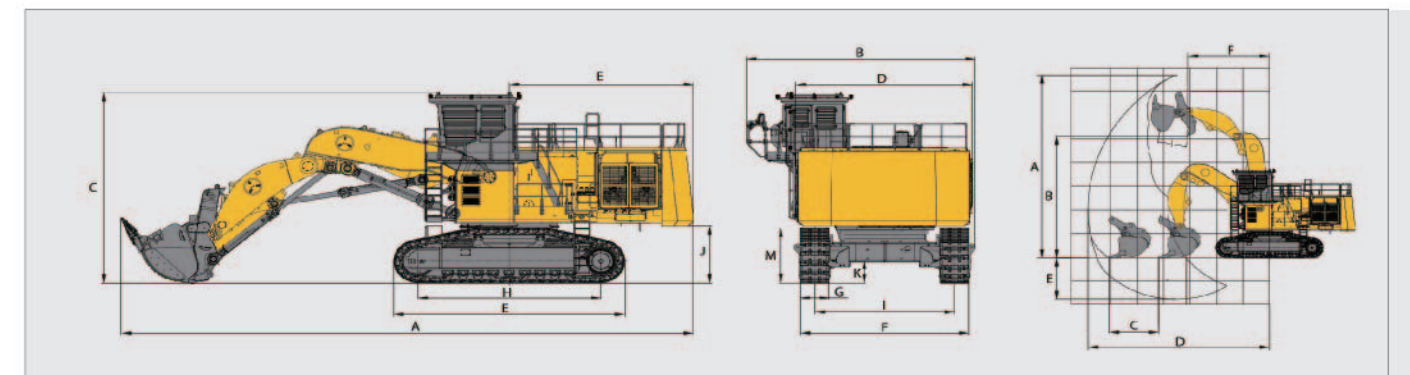
A 最大挖掘高度 Max. digging height	mm	15600
B 最大卸载高度 Max. dumping height	mm	10300
C 最大挖掘深度 Max. digging depth	mm	3700
D 8英尺水平面挖掘深度 8-inch horizontal plane digging depth	mm	/
E 最大垂直挖掘深度 Max. vertical wall digging depth	mm	/
F 最大挖掘半径 Max. digging reach	mm	13880
G 最小回转半径 Min. swing radius	mm	7950

### 标配 Standard

动臂长度 Length of boom	mm	6370
斗杆长度 Length of arm	mm	4200
铲斗容量 Bucket capacity	m³	15

### 选配 Option

动臂长度 Length of boom	mm	/
斗杆长度 Length of arm	mm	/
铲斗容量 Bucket capacity	m³	14 (正铲) 17 (正铲) 18 (正铲)



材料和规格可随时改变，恕不另行通知。  
Materials and specifications in the catalogue are subject to change at anytime without notice.



# XE3000液压铲 HYDRAULIC EXCAVATOR



## 主要参数/ Main Specifications

型号 Model	单位 UOM	参数 Parameters
操作重量 Operation Weight	kg	290000
铲斗容量 Bucket Capacity	m <sup>3</sup>	15
<b>发动机 Engine</b>		
发动机型号 Model	/	QSK50
直喷 Direct injection	/	√
4冲程 Four strokes	/	√
水冷 Water cooling	/	√
涡轮增压 Turbo-charging	/	√
低温中冷 LTA	/	√
缸数 No. of cylinders	/	16
额定输出功率/转速 Output power	kw/rpm	1193/1800
最大扭矩/转速 Torque/Speed	N.m	6835/1500
排量 Displacement	L	50
<b>主要性能 Main performance</b>		
行驶速度(高/低) Travel speed (H/L)	km/h	2.0/1.5
回转速度 Rotating speed	r/min	4
爬坡能力 Gradeability	°	30
接地比压 Ground pressure	kPa	202
铲斗挖掘力 Bucket digging force	kN	790
斗杆挖掘力 Arm crowd force	kN	782
<b>液压系统 Hydraulic system</b>		
主泵 Main pump	/	4个柱塞泵 Plunger
主泵额定流量 Rated flow of main pump	L/min	4X750
主安全阀压力 Pressure of prime valve	MPa	32
行走系统压力 Pressure of travel system	MPa	32
回转系统压力 Pressure of swing system	MPa	35
先导系统压力 Pressure of pilot system	MPa	6
<b>油类容量 Oil capacity</b>		
燃油箱容量 Fuel tank capacity	L	5700
液压油箱容量 Hydraulic tank capacity	L	2500
发动机油容量 Engine oil capacity	L	260

型号 Model	单位 UOM	参数 Parameters
<b>外形尺寸 Outline dimension</b>		
A 总长 Overall length	mm	18170
B 总宽 Overall width	mm	8007
C 总高 Overall height	mm	8470
D 转台宽度 Width of platform	mm	6410
E 履带长度 Length of crawler	mm	8108
F 底盘总宽 Overall width of chassis	mm	5900
G 标准履带板宽度 Width of crawler	mm	1000
H 履带轴距 Track length on ground	mm	6420
I 轨距 Crawler gauge	mm	4900
J 配置高地间隙 Clearance under counterweight	mm	2247
K 最低离地间隙 Min. ground clearance	mm	827
L 尾部回转半径 Min. tail swing radius	mm	6640
M 履带高度 Height of crawler	mm	2165
<b>作业范围 Working scope</b>		
A 最大挖掘高度 Max. digging height	mm	15100
B 最大卸载高度 Max. dumping height	mm	9900
C 最大挖掘深度 Max. digging depth	mm	8630
D 8英尺水平面挖掘深度 8-inch horizontal plane digging depth	mm	8520
E 最大垂直挖掘深度 Max. vertical wall digging depth	mm	3000
F 最大挖掘半径 Max. digging reach	mm	16400
G 最小回转半径 Min. swing radius	mm	7980
<b>标配 Standard</b>		
动臂长度 Length of boom	mm	9000
斗杆长度 Length of arm	mm	4000
铲斗容量 Bucket capacity	m <sup>3</sup>	15
<b>选配 Option</b>		
动臂长度 Length of boom	mm	6370
斗杆长度 Length of arm	mm	4200
铲斗容量 Bucket capacity	m <sup>3</sup>	/

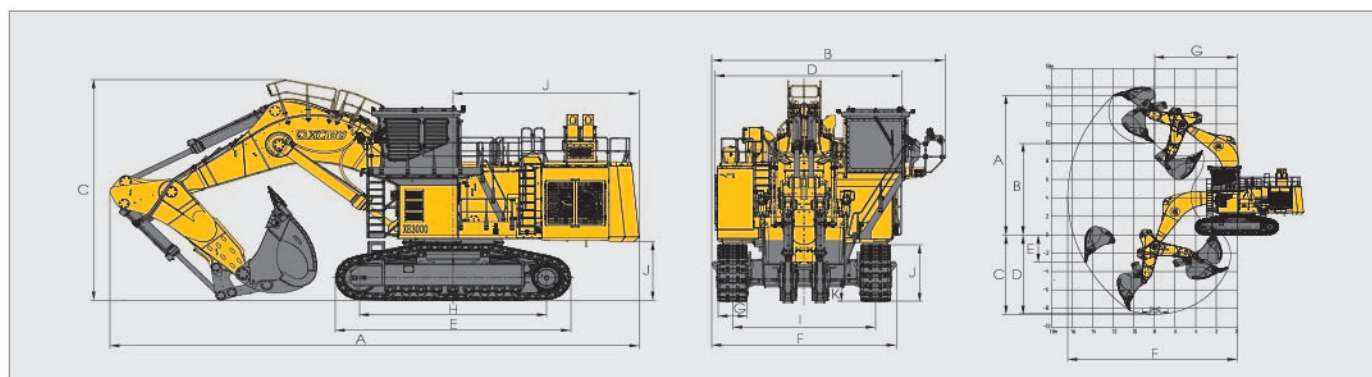
# XE4000E液压铲 HYDRAULIC EXCAVATOR



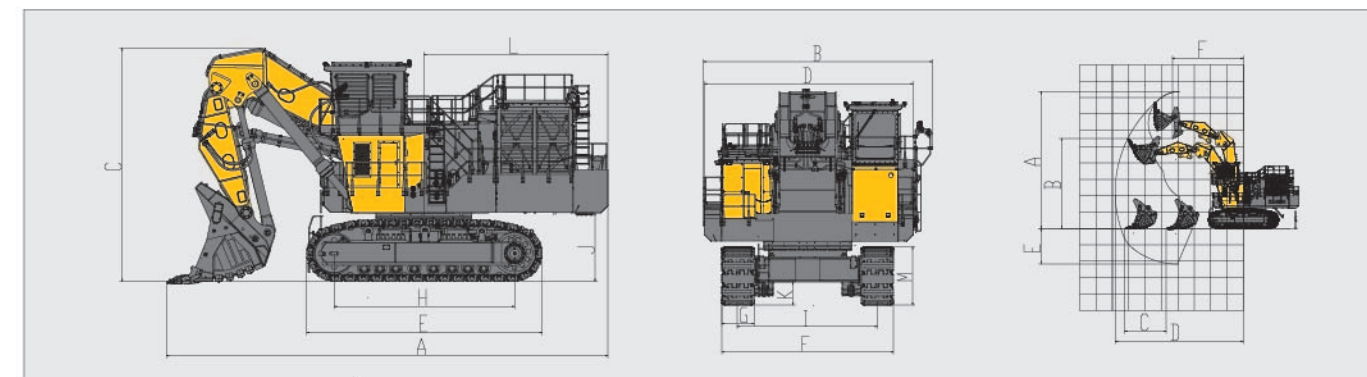
## 主要参数/ Main Specifications

型号 Model	单位 UMO	参数 Parameters
操作重量 Operation Weight	kg	380000
铲斗容量 Bucket Capacity	m <sup>3</sup>	21-23
<b>发动机 Engine</b>		
发动机型号 Model	/	XCMG-M450/1200B
电喷 Electronic fuel injection	/	/
4冲程 Four strokes	/	/
水冷 Water cooling	/	/
涡轮增压 Turbo-charging	/	/
空中中冷 Air to air intercooler	/	/
缸数 No. of cylinders	/	/
额定输出功率/转速 Output power	kw/rpm	1200/1786 (60HZ) /1200/1486(50HZ)
最大扭矩/转速 torque/speed	N.m/rpm	6417/1786(60HZ)/7712/1486(50HZ)
排量 Displacement	L	/
<b>主要性能 Main performance</b>		
行驶速度(高/低) Travel speed (H/L)	km/h	2.3/1.6
回转速度 Rotating speed	r/min	3.2
爬坡能力 Gradeability	°	30°
接地比压 Ground pressure	kPa	201
铲斗挖掘力 Bucket digging force	kN	1190
斗杆挖掘力 Arm crowd force	kN	1340
最大牵引力 Maximum traction	kN	1801
<b>液压系统 Hydraulic system</b>		
主泵 Main pump	/	8个柱塞泵 Plunger pumps
主泵额定流量 Rated flow of main pump	L/min	8 × 549
主安全阀压力 Pressure of prime valve	MPa	29.4
行走系统压力 Pressure of travel system	MPa	29.4
回转系统压力 Pressure of swing system	MPa	29.4
先导系统压力 Pressure of pilot system	MPa	4.4
<b>油类容量 Oil Capacity</b>		
燃油箱容量 Fuel tank capacity	L	/
液压油箱容量 Hydraulic tank capacity	L	2050
发动机油容量 Engine oil capacity	L	/

型号 Model	单位 UMO	参数 Parameters
<b>外形尺寸 Appearance size</b>		
A 总长 Overall length	mm	16185
B 总宽 Overall width	mm	9070
C 总高 Overall height	mm	9220
D 转台宽度 Width of platform	mm	8260
E 履带长度 Length of crawler	mm	8700
F 底盘总宽 Overall width of chassis	mm	6770
G 标准履带板宽度 Width of crawler	mm	1270
H 履带轴距 Track length on ground	mm	6660
I 轨距 Crawler gauge	mm	5500
J 配置高地间隙 Clearance under counterweight	mm	2430
K 最低离地间隙 Min. ground clearance	mm	910
L 尾部回转半径 Min. tail swing radius	mm	7175
M 履带高度 Height of crawler	mm	2305
<b>作业范围 Working scope</b>		
A 最大挖掘高度 Max. digging height	mm	16760
B 最大卸载高度 Max. dumping height	mm	11000
C 地面平推距离 Level crowding distance	mm	5080
D 最大挖掘半径 Max. digging reach	mm	15670
E 最大挖掘深度 Max. digging depth	mm	4360
F 最大卸载高度处工作半径 Working radius at max. dumping height	mm	8660
<b>标配 Standard</b>		
动臂长度 Length of boom	mm	7100
斗杆长度 Length of arm	mm	4700
铲斗容量 Bucket capacity	m <sup>3</sup>	23
<b>选配 Option</b>		
动臂长度 Length of boom	mm	7100
斗杆长度 Length of arm	mm	4700
铲斗容量 Bucket capacity	m <sup>3</sup>	21 (正铲)



材料和规格可随时改变，恕不另行通知。  
Materials and specifications in the catalogue are subject to change at anytime without notice.



材料和规格可随时改变，恕不另行通知。  
Materials and specifications in the catalogue are subject to change at anytime without notice.



# XE4000 液压铲 HYDRAULIC EXCAVATOR



## 主要参数/ Main Specifications

型号 Model	单位 UOM	参数 Parameters
操作重量 Operation Weight	kg	384000
铲斗容量 Bucket Capacity	m <sup>3</sup>	20-22
<b>发动机 Engine</b>		
发动机型号 Model	/	QSK60C
直喷 Direct injection	/	√
4冲程 Four strokes	/	√
水冷 Water cooling	/	√
涡轮增压 Turbo-charging	/	√
低温中冷 LTA	/	√
缸数 No. of cylinders	/	16
额定输出功率/转速 Output power	kw/rpm	1491/1800
最大扭矩/转速 Torque/Speed	N.m	8906/1500
排量 Displacement	L	60

### 主要性能 Main performance

行驶速度(高/低) Travel speed (H/L)	km/h	2.3/1.6
回转速度 Rotating speed	r/min	3.2
爬坡能力 Gradeability	°	30
接地比压 Ground pressure	kPa	200
铲斗挖掘力 Bucket digging force	kN	1057
斗杆挖掘力 Arm crowd force	kN	961

### 液压系统 Hydraulic system

主泵 Main pump	/	8个柱塞泵 Plunger pumps
主泵额定流量 Rated flow of main pump	L/min	8×549
主安全阀压力 Pressure of prime valve	MPa	29.4
行走系统压力 Pressure of travel system	MPa	29.4
回转系统压力 Pressure of swing system	MPa	29.4
先导系统压力 Pressure of pilot system	MPa	4.4

### 油类容量 Oil capacity

燃油箱容量 Fuel tank capacity	L	7450
液压油箱容量 Hydraulic tank capacity	L	2050
发动机油容量 Engine oil capacity	L	267

型号 Model	单位 UOM	参数 Parameters
<b>外形尺寸 Outline dimension</b>		
A 总长 Overall length	mm	20000
B 总宽 Overall width	mm	9070
C 总高 Overall height	mm	8590
D 转台宽度 Width of platform	mm	8260
E 履带长度 Length of crawler	mm	8700
F 底盘总宽 Overall width of chassis	mm	6770
G 标准履带板宽度 Width of crawler	mm	1270
H 履带轴距 Track length on ground	mm	6660
I 轨距 Crawler gauge	mm	5500
J 配重离地间隙 Clearance under counterweight	mm	2430
K 最低离地间隙 Min. ground clearance	mm	910
L 尾部回转半径 Min. tail swing radius	mm	7175
M 履带高度 Height of crawler	mm	2305

### 作业范围 Working scope

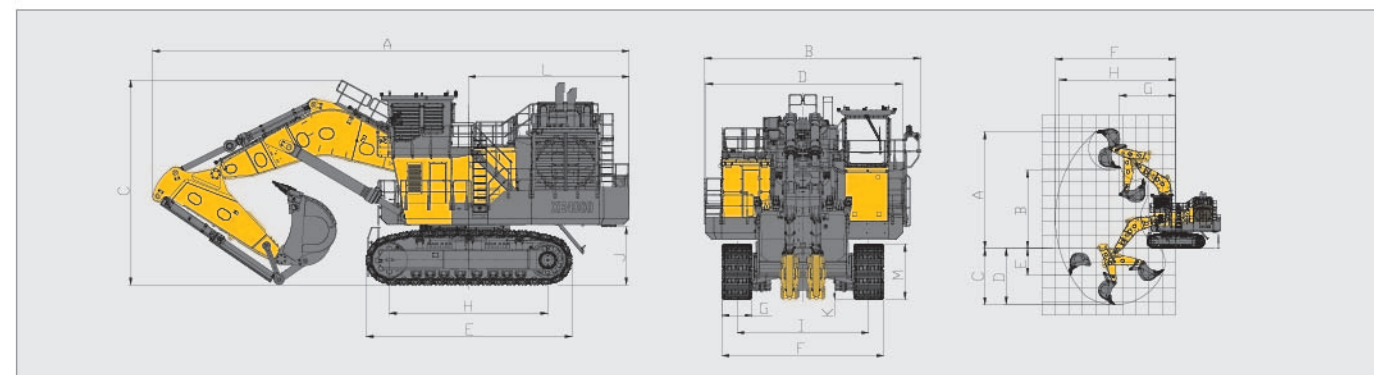
A 最大挖掘高度 Max. digging height	mm	17470
B 最大卸载高度 Max. dumping height	mm	11740
C 最大挖掘深度 Max. digging depth	mm	8430
D 8英尺水平面挖掘深度 8-inch horizontal plane digging depth	mm	8355
E 最大垂直挖掘深度 Max. vertical wall digging depth	mm	4015
F 最大挖掘半径 Max. digging reach	mm	18050
G 最小回转半径 Min. swing radius	mm	8480

### 标配 Standard

动臂长度 Length of boom	mm	9600
斗杆长度 Length of arm	mm	4500
铲斗斗容 Bucket capacity	m <sup>3</sup>	22

### 选配 Option

正铲铲斗斗容 Face shovel capacity	m <sup>3</sup>	20 (加强 Strength)
-----------------------------	----------------	------------------



材料和规格可随时改变，恕不另行通知。  
Materials and specifications in the catalogue are subject to change at anytime without notice.

# XE7000E 液压铲 HYDRAULIC EXCAVATOR



## 主要参数/ Main Specifications

型号 Model	单位 UOM	参数 Parameters
操作重量 Operation Weight	kg	660000
铲斗容量 Bucket Capacity	m <sup>3</sup>	34-42
<b>发动机 Engine</b>		
发动机型号 Model	/	AMA450L4A (ABB)
直喷 Direct injection	/	—
4冲程 Four strokes	/	—
水冷 Water cooling	/	—
涡轮增压 Turbo-charging	/	—
低温中冷 LTA	/	—
缸数 No. of cylinders	/	—
额定输出功率/转速 Output power	kw/rpm	2 X 1250/1489
最大扭矩/转速 Torque/Speed	N.m	2 X 8016/1489
排量 Displacement	L	—

### 主要性能 Main performance

行驶速度(高/低) Travel speed (H/L)	km/h	1.5
回转速度 Rotating speed	r/min	3.5
爬坡能力 Gradeability	°	20°
接地比压 Ground pressure	kPa	271
铲斗挖掘力 Bucket digging force	kN	1830
斗杆挖掘力 Arm crowd force	kN	2270
最大牵引力 Maximum traction	kN	2315

### 液压系统 Hydraulic system

主泵 Main pump	/	8个柱塞泵 Plunger pumps
主泵额定流量 Rated flow of main pump	L/min	8×750
主安全阀压力 Pressure of prime valve	MPa	32
行走系统压力 Pressure of travel system	MPa	30
回转系统压力 Pressure of swing system	MPa	35
先导系统压力 Pressure of pilot system	MPa	5.5

### 油类容量 Oil capacity

燃油箱容量 Fuel tank capacity	L	—
液压油箱容量 Hydraulic tank capacity	L	6000
发动机油容量 Engine oil capacity	L	—

型号 Model	单位 UOM	参数 Parameters
<b>外形尺寸 Outline dimension</b>		
A 总长 Overall length	mm	23500
B 总宽 Overall width	mm	9090
C 总高 Overall height	mm	9440
D 转台宽度 Width of platform	mm	7000
E 履带长度 Length of crawler	mm	10000
F 底盘总宽 Overall width of chassis	mm	7400
G 标准履带板宽度 Width of crawler	mm	1400
H 履带轴距 Track length on ground	mm	7500
I 轨距 Crawler gauge	mm	6000
J 配重离地间隙 Clearance under counterweight	mm	2885
K 最低离地间隙 Min. ground clearance	mm	1360
L 尾部回转半径 Min. tail swing radius	mm	7930
M 履带高度 Height of crawler	mm	2900

### 作业范围 Working scope

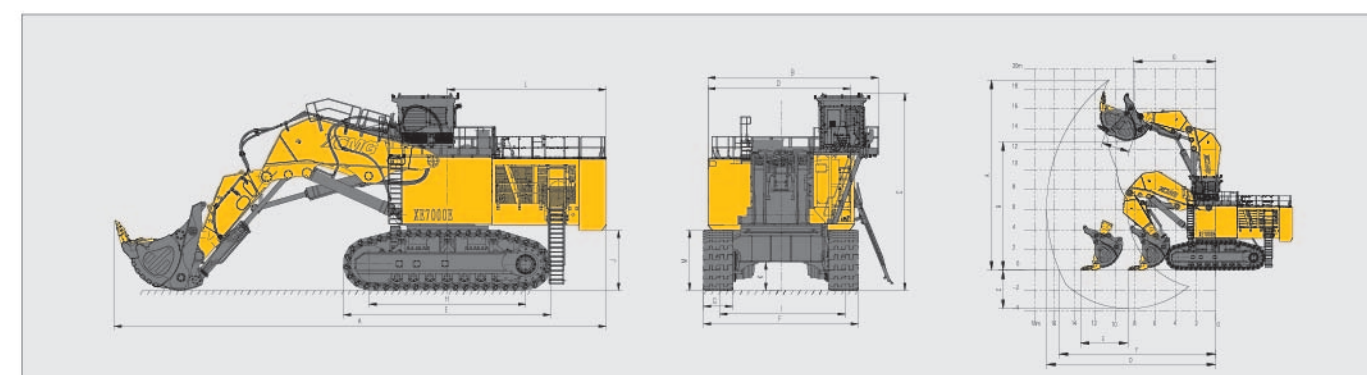
A 最大挖掘高度 Max. digging height	mm	18700
B 最大卸载高度 Max. dumping height	mm	12900
C 最大挖掘深度 Max. digging depth	mm	3800
D 8英尺水平面挖掘深度 8-inch horizontal plane digging depth	mm	/
E 最大垂直挖掘深度 Max. vertical wall digging depth	mm	/
F 最大挖掘半径 Max. digging reach	mm	16700
G 最小回转半径 Min. swing radius	mm	9250

### 标配 Standard

动臂长度 Length of boom	mm	8000
斗杆长度 Length of arm	mm	5000
铲斗斗容 Bucket capacity	m <sup>3</sup>	34

### 选配 Option

反铲铲斗斗容 Backhoe capacity	m <sup>3</sup>	42
-------------------------	----------------	----



材料和规格可随时改变，恕不另行通知。  
Materials and specifications in the catalogue are subject to change at anytime without notice.



# XE7000液压铲 HYDRAULIC EXCAVATOR



## 主要参数/ Main Specifications

型号 Model	单位 UOM	参数 Parameters
操作重量 Operation Weight	kg	673000
铲斗容量 Bucket Capacity	m <sup>3</sup>	36-38

发动机 Engine		
发动机型号 Model	/	Cummins QSK50
直喷 Direct injection	/	√
4冲程 Four strokes	/	√
水冷 Water cooling	/	√
涡轮增压 Turbo-charging	/	√
低温中冷 LTA	/	√
缸数 No. of cylinders	/	16
额定输出功率/转速 Output power	kw/rpm	2 × 1193/1800
最大扭矩/转速 Torque/Speed	N.m	2 × 6835/1500
排量 Displacement	L	2 × 50

主要性能 Main performance		
行驶速度 Travel speed	km/h	1.5
回转速度 Rotating speed	r/min	3.5
爬坡能力 Gradeability	°	20
接地比压 Ground pressure	kPa	276
铲斗挖掘力 Bucket digging force	kN	1640
斗杆挖掘力 Arm crowd force	kN	1535
最大牵引力 Maximum traction	kN	2315

液压系统 Hydraulic system		
主泵 Main pump	/	8个柱塞泵 Plunger pumps
主泵额定流量 Rated flow of main pump	L/min	8 × 750
主安全阀压力 Pressure of prime valve	MPa	32
行走系统压力 Pressure of travel system	MPa	30
回转系统压力 Pressure of swing system	MPa	35
先导系统压力 Pressure of pilot system	MPa	5.5

油类容量 Oil capacity		
燃油箱容量 Fuel tank capacity	L	13000
液压油箱容量 Hydraulic tank capacity	L	6000
发动机油容量 Engine oil capacity	L	2 × 260

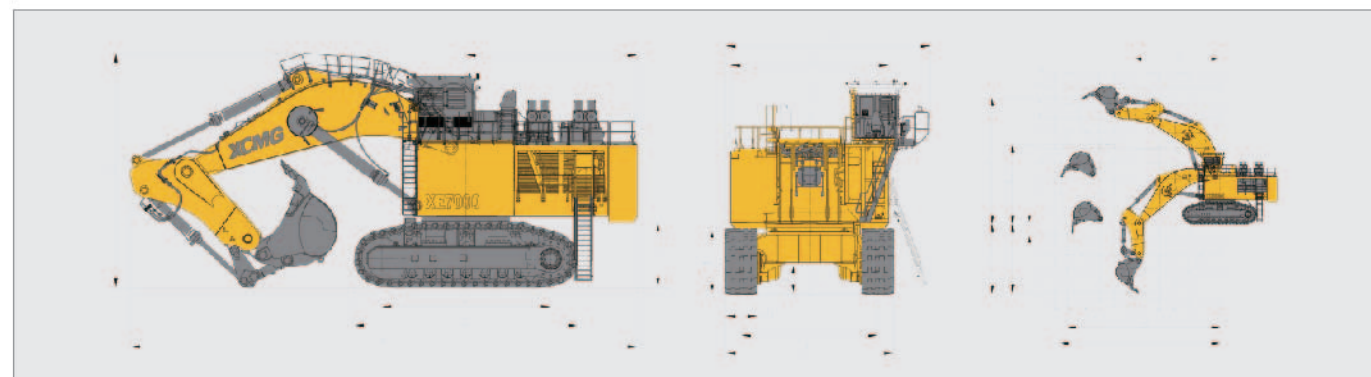
型号 Model	单位 UOM	参数 Parameters
----------	--------	---------------

外形尺寸 Outline dimension		
A 总长 Overall length	mm	22500
B 总宽 Overall width	mm	9090
C 总高 Overall height	mm	9440
D 转台宽度 Width of platform	mm	7000
E 履带长度 Length of crawler	mm	10000
F 底盘总宽 Overall width of chassis	mm	7400
G 标准履带板宽度 Width of crawler	mm	1400
H 履带轴距 Track length on ground	mm	7500
I 轨距 Crawler gauge	mm	6000
J 配重离地间隙 Clearance under counterweight	mm	2885
K 最低离地间隙 Min. ground clearance	mm	1360
L 尾部回转半径 Min. tail swing radius	mm	7930
M 履带高度 Height of crawler	mm	2900

作业范围 Working scope		
A 最大挖掘高度 Max. digging height	mm	16650
B 最大卸载高度 Max. dumping height	mm	10500
C 最大挖掘深度 Max. digging depth	mm	9220
D 8英尺水平面挖掘深度 8-inch horizontal plane digging depth	mm	9130
E 最大垂直挖掘深度 Max. vertical wall digging depth	mm	1310
F 最大挖掘半径 Max. digging reach	mm	21190
G 最小回转半径 Min. swing radius	mm	11520

标配 Standard		
动臂长度 Length of boom	mm	11750
斗杆长度 Length of arm	mm	5000
铲斗容量 Bucket capacity	m <sup>3</sup>	36

选配 Option		
动臂长度 Length of boom	mm	/
斗杆长度 Length of arm	mm	/
铲斗容量 Bucket capacity	m <sup>3</sup>	38



材料和规格可随时改变，恕不另行通知。  
Materials and specifications in the catalogue are subject to change at anytime without notice.



## 双桥刚性矿车 DOUBLE AXLE RIGID DUMP TRUCK

徐工生产的全系列双桥刚性矿车，产品吨位覆盖70-440t，主要适用于露天矿山开采、大规模土方运输的施工，能够充分满足不同矿山的施工需求。该系列产品承载量大，耐颠簸、抗冲击，具有极高的运输效率、舒适的操作性、维护成本低、使用寿命长等特点，是露天矿山施工设备采购的最佳选择。

XCMG boasts a full series of Double Axle Rigid Dump Truck ranging from 70 - 440 t, which are most-ly applied in construction of opencast mining and large-scale earthwork transporting, making XCMG meet diverse mining and construction demands. Characterized by exceedingly high transport efficiency, comfortability, low maintenance cost, and long service life, etc., products of this series are of large bearing capacity, firm structure, shockproof performance, and impact resistance, so they are the optimal choice for you in purchase of opencast mining and construction equipments.



# XDR100双桥刚性矿车

## DOUBLE AXLE RIGID DUMP TRUCK



### 性能参数/ Performance Parameters

额定载重 Rated Payload	91000kg				
空载车重 Empty Weight	67000kg				
整车总质量 Gross Vehicle Weight	158000kg				
驱动形式 Drive Style	4×2				
最高车速 Max. Speed	48km/h				
最大爬坡度 Max. Gradeability	30%				
最小转弯直径 Min. Turning Diameter	24m				
重量分布 Weight Distribution	空载 Empty	前桥Front	48%	后桥 Rear	52%
	满载 Loaded	前桥Front	32%	后桥 Rear	68%
工作容量 (L) Service Capacities	燃油Fuel	1050	液压油 Hydraulic system	730	
	冷却系统 Cooling system	350	曲轴箱Crankcase	134	
	变速箱	100	齿轮箱	120	
货厢标准容积 Body Capacity	平装 Struck	42 m³	堆装 2:1 heaped 2:1	60m³	
外形尺寸 (空载, 长×宽×高) Overall dimension (EMPTY, L×W×H)	10700x 6815x 5600mm				

### 主要部件/ Main Parts

#### 发动机 Engine

型号 Model	QST30
额定功率/转速 Rated Power/Speed	783kw
最大扭矩/转速 Max. Torque/Speed	1050HP/2100rpm

#### 传动系统 Drivetrain

变速箱 Transmission	H8610ORS	
驱动桥 Drive Axle	主减速比 Differential	2.16:1
	轮边速比 Planetary	13.75:1
	总速比 Total Reduction	29.70:1

#### 轮胎与轮辋 Tires And Rims

标准轮胎 Standard Tire	27.00R49无内胎、全钢子午线轮胎 27.00R49 Tubeless, all-steel radial tires
标准轮辋 Standard Rim	49-19.5/4.0

#### 驾驶室 Cab

类型 Type	FOPS/ROPS驾驶室 FOPS/ROPS Cab
---------	----------------------------

#### 制动系统 Brake System

前桥制动 Front Brake	干式制动盘, 总制动面积1960 cm² Dry disc, diameter Pad area, total 1,960 cm²
后桥制动 Rear Brake	徐工油冷、湿式制动器、完全隔绝油物与水。总制动面积91,000 cm² XCMG oil cooled, multiple disc, completely sealed from dirt and water. Breaking surface, total 91,000 cm²

#### 前悬架 Front Suspension

独立悬架, 油气悬架缸	Independent, hydro-pneumatic suspension
-------------	---

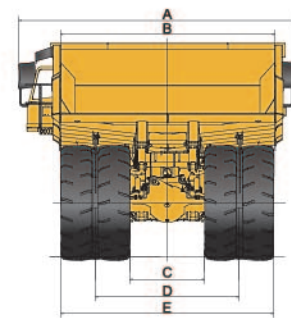
#### 液压系统 Hydraulic System

转向 Steering	流量放大式动力转向, 辅助转向由蓄能器自动提供。 Flow amplified power steering. Supplementary steering automatically supplied by accumulators.
-------------	---

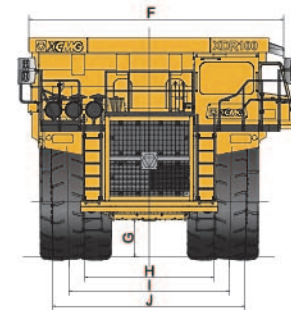
#### 电气系统 Electrical System

	24 V
--	------

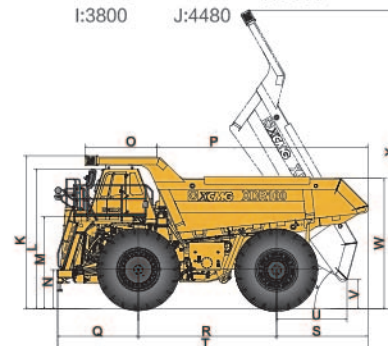
材料和规格可随时改变, 恕不另行通知。  
Materials and specifications in the catalogue are subject to change at anytime without notice.



A:6815 B:5100 C:1780  
D:3400 E:5060



F:5855 G:780 H:3000  
I:3800 J:4480



K:5600 L:4725 M:3145 N:1375  
O:2155 P:6985 Q:2850 R:4580  
S:3045 T:10700 U:2300 V:1030  
W:4480 X:9635

# XDE130双桥刚性矿车

## DOUBLE AXLE RIGID DUMP TRUCK



### 性能参数/ Performance Parameters

额定载重 Rated Payload	120000kg				
空载车重 Empty Weight	85000 kg				
整车总质量 Gross Vehicle Weight	205000 kg				
驱动形式 Drive Style	4×2				
最高车速 Max. Speed	50 km/h				
最大爬坡度 Max. Gradeability	20%				
最小转弯直径 Min. Turning Diameter	23 m				
重量分布 Weight Distribution	空载 Empty	前桥Front	50%	后桥 Rear	50%
	满载 Loaded	前桥Front	33%	后桥 Rear	67%
工作容量 (L) Service Capacities	燃油Fuel	1200	液压油 Hydraulic system	650	
	冷却系统 Cooling system	330	曲轴箱Crankcase	130	
	变速箱	100	齿轮箱	120	
货厢标准容积 Body Capacity	平装 Struck	60 m³	堆装 2:1 heaped 2:1	73 m³	
外形尺寸 (空载, 长×宽×高) Overall dimension (EMPTY, L×W×H)	12000x6790x6340mm				

### 主要部件/ Main Parts

#### 发动机 Engine

型号 Model	16V2000
额定功率/转速 Rated Power/Speed	970kw 1301HP /1800 rpm
最大扭矩/转速 Max. Torque/Speed	5288 Nm/1500 rpm
*选装 Optional	QSK38

#### 电传动 Electric Drive

交流电传动系统 Drive System	XCMG 130AC
主发电机型号 Alternator	XCMG-A920P
牵引电机型号 Traction Motor	XCMG-M360
总减速比 Ratio	33.85:1

#### 轮胎与轮辋 Tires And Rims

标准轮胎 Standard Tire	30.00R51无内胎、全钢子午线轮胎 30.00R51 Tubeless, all-steel radial tires
*选装 Optional	33.00R51无内胎、全钢子午线轮胎 33.00R51 Tubeless, all-steel radial tires

#### 驾驶室 Cab

类型 Type	ROPS&FOPS 驾驶室 ROPS&FOPS Cab
---------	-----------------------------

#### 制动系统 Brake System

行车制动 Service Brakes	全液压干盘式制动系统 All hydraulically actuated dry disc brakes at each wheel
电制动 Electric Dynamic Retarder	最大功率1400 kw Max. 1400 kw

#### 前悬架 Front Suspension

独立悬架, 油气悬架缸	Independent, hydro-pneumatic suspension
-------------	---

#### 液压系统 Hydraulic System

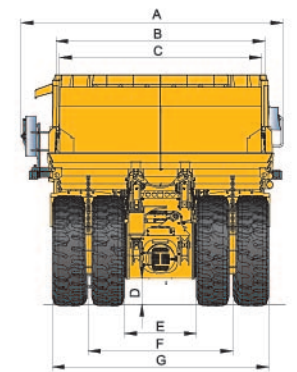
转向 Steering	流量放大式动力转向, 辅助转向由蓄能器自动提供 Flow amplified power steering. Supplementary steering automatically supplied by accumulators
-------------	---

举升时间 Hoist Time(Power-up Loaded)	16 s
----------------------------------	------

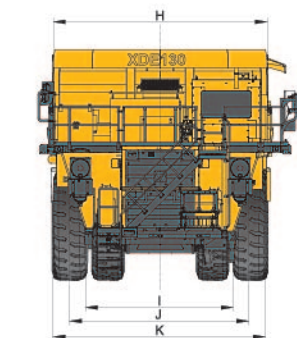
#### 电气系统 Electrical System

	24 V
--	------

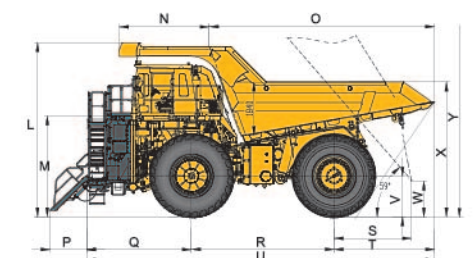
材料和规格可随时改变, 恕不另行通知。  
Materials and specifications in the catalogue are subject to change at anytime without notice.



A:6790 B:5475 C:5290  
D:570 E:1905 F:3930  
G:5640



H:5610 I:3860 J:4695  
K:5530



L:6100 M:3500 N:3100 O:7760  
P:1255 Q:3630 R:4900 S:2775  
T:3465 U:12000 V:1460 W:1120  
X:4650 Y:11310



# XDE200双桥刚性矿车

## DOUBLE AXLE RIGID DUMP TRUCK

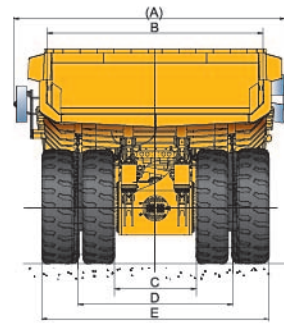


### 性能参数/ Performance Parameters

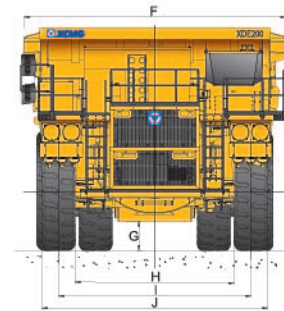
额定载重 Rated Payload	186000kg		
空载车重 Empty Weight	138000 kg		
整车总质量 Gross Vehicle Weight	324000 kg		
驱动形式 Drive Style	4 × 2		
最高车速 Max. Speed	56km/h		
最大爬坡度 Max. Gradeability	26%		
最小转弯直径 Min. Turning Diameter	27 m		
重量分布 Weight Distribution	空载 Empty	前桥Front 50%	后桥 Rear 50%
	满载 Loaded	前桥Front 33%	后桥 Rear 67%
工作容量 (L) Service Capacities	燃油Fuel 3000	液压油 Hydraulic system 800	
	冷却系统 Cooling system 470	曲轴箱Crankcase 205	
货厢标准容积 Body Capacity	平装 Struck 77 m³	堆装 2:1 heaped 2:1 110 m³	
外形尺寸 (空载, 长×宽×高) Overall dimension (EMPTY, L×W×H)	13300 × 7460 × 6700 mm		

### 主要部件/ Main Parts

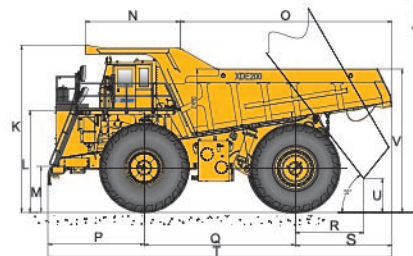
<b>发动机 Engine</b>		
型号 Model	12V4000	
额定功率/转速 Rated Power/Speed	1510kw 2025 HP / 1800 rpm	
最大扭矩/转速 Max. Torque/Speed	8482 Nm / 1700 rpm	
* 选装 Optional	QSK50	
<b>电传动 Electric Drive</b>		
交流电传动系统 Drive System	XCMG 200AC drive system	GE 200AC drive system
主发电机型号 Alternator	XCMG-A1300	GTA49
牵引电机型号 Traction Motor	XCMG-M590	GEB38
总减速比 Ratio	30.36:1	26.825:1
<b>轮胎与轮辋 Tires And Rims</b>		
标准轮胎 Standard Tire	37.00R57无内胎、全钢子午线轮胎	
标准轮辋 Standard Rim	27.00/6.0	
<b>驾驶室 Cab</b>		
类型 Type	ROPS&FOPS 驾驶室 ROPS&FOPS Cab	
<b>制动系统 Brake System</b>		
行车制动 Service Brakes	全液压干盘式制动系统 All hydraulically actuated dry disc brakes at each wheel	
电制动 Electric Dynamic Retarder	最大功率2200 kw Max. 2200	最大功率2400 kw Max. 2400 kw
<b>前悬架 Front Suspension</b>		
独立悬架, 油气悬架缸	Independent, hydro-pneumatic suspension	
<b>液压系统 Hydraulic System</b>		
转向 Steering	流量放大式动力转向, 辅助转向由蓄能器自动提供	
转向 Steering	Flow amplified power steering. Supplementary steering automatically supplied by accumulators	
举升时间 Hoist Time(Power-up Loaded)	20 s	
<b>电气系统 Electrical System</b>		
	24 V	



A:8350 B:6900 C:2325  
D:4720 E:7115



F:8100 G:710 H:4610  
I:5640 J:6670



K:7050 L:4100 M:1480 N:4345  
O:8180 P:4065 Q:5850 R:3390  
S:3945 T:13860 U:1650 V:5830  
W:13200

材料和规格可随时改变, 恕不另行通知。  
Materials and specifications in the catalogue are subject to change at anytime without notice.

# XDE240双桥刚性矿车

## DOUBLE AXLE RIGID DUMP TRUCK

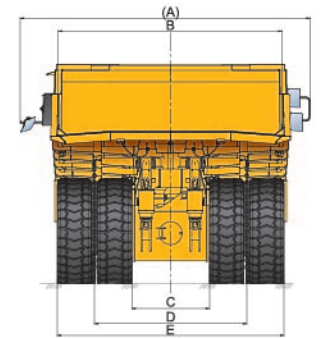


### 性能参数/ Performance Parameters

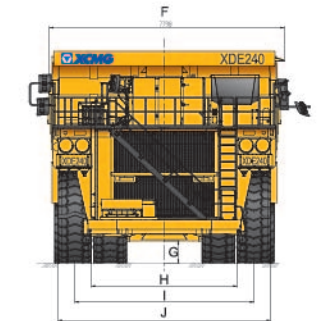
额定载重 Rated Payload	230000kg		
空载车重 Empty Weight	172000kg		
整车总质量 Gross Vehicle Weight	395000kg		
驱动形式 Drive Style	4 × 2		
最高车速 Max. Speed	64km/h		
最大爬坡度 Max. Gradeability	17%		
最小转弯直径 Min. Turning Diameter	28.4m		
重量分布 Weight Distribution	空载 Empty	前桥Front 50%	后桥 Rear 50%
	满载 Loaded	前桥Front 33%	后桥 Rear 67%
工作容量 (L) Service Capacities	燃油Fuel 4500	液压油 Hydraulic system 900	
	冷却系统 Cooling system 960	机油 Engine oil 280	
货厢标准容积 Body Capacity	平装 Struck 118 m³	堆装 2:1 heaped 2:1 148 m³	
外形尺寸 (空载, 长×宽×高) Overall dimension (EMPTY, L×W×H)	14784x9106x7439mm		

### 主要部件/ Main Parts

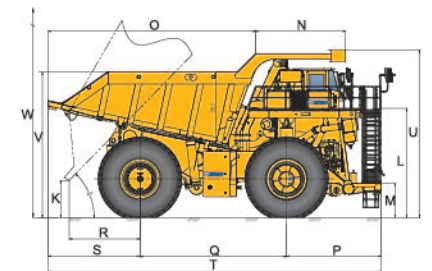
<b>发动机 Engine</b>		
型号 Model	16V4000	
额定功率/转速 Rated Power/Speed	1865 kw 2500 HP /1800 rpm	
最大扭矩/转速 Max. Torque/Speed	11868Nm / 1500rpm	
* 选装 Optional	QSK60	
<b>电传动 Electric Drive</b>		
交流电传动系统 Drive System	XCMG 240AC Drive System	GE 240AC drive system
主发电机型号 Alternator	XCMG-A2000	GTA41
牵引电机型号 Traction Motor	XCMG-M780	GEB25
总减速比 Ratio	31.875:1	31.875:1
* 选装Optional	XCMG交流电传动系统 XCMG AC drive system	
<b>轮胎与轮辋 Tires And Rims</b>		
标准轮胎 Standard Tire	40/80R57 无内胎、全钢子午线轮胎	
标准轮辋 Standard Rim	40/80R57 Tubeless, all-steel radial tires	
	32.00/6.0	
<b>驾驶室 Cab</b>		
类型 Type	ROPS&FOPS驾驶室 ROPS&FOPS Cab	
<b>制动系统 Brake System</b>		
行车制动 Service Brakes	全液压干盘式制动系统 All hydraulically actuated dry disc brakes at each wheel	
电制动 Electric Dynamic Retarder	最大功率2983 kw Max. 2983kw	
<b>前悬架 Front Suspension</b>		
独立悬架, 油气悬架缸	Independent, hydro-pneumatic suspension	
<b>液压系统 Hydraulic System</b>		
转向 Steering	流量放大式动力转向, 辅助转向由蓄能器自动提供	
转向 Steering	Flow amplified power steering. Supplementary steering automatically supplied by accumulators	
举升时间 Lifting time	28S	
<b>电气系统 Electrical System</b>		
	24 V	



A: 9110 B:8130 C:2610  
D:5290 E:7970



F:8780 G:641 H:4850  
I:6020 J:7190



K:1840 L:4310 M:1470 N:4975  
O:9310 P:4250 Q:6350 R:3360  
S:4360 T:14780 U:7440 H:4850  
W:14530

材料和规格可随时改变, 恕不另行通知。  
Materials and specifications in the catalogue are subject to change at anytime without notice.



# XDE320双桥刚性矿车

## DOUBLE AXLE RIGID DUMP TRUCK



### 性能参数/ Performance Parameters

额定载重 Rated Payload	300000 kg		
空载车重 Empty Weight	210000 kg		
整车总质量 Gross Vehicle Weight	510000 kg		
驱动形式 Drive Style	4 × 2		
最高车速 Max. Speed	64.5 km/h		
最大爬坡度 Max. Gradeability	18%		
最小转弯直径 Min. Turning Diameter	29.2m		
重量分布 Weight Distribution	空载 Empty	前桥Front 50%	后桥 Rear 50%
	满载 Loaded	前桥Front 33%	后桥 Rear 67%
工作容量 (L) Service Capacities	燃油Fuel 4500	液压油 Hydraulic system 1080	
	冷却系统 Cooling system 800	曲轴箱Crankcase 280	
	平装 Struck 171m³	堆装 2:1 heaped 2:1 211m³	
货箱标准容积 Body Capacity	171m³		
外形尺寸 (空载, 长×宽×高) Overall dimension (EMPTY, L × W × H)	15360 × 9100 × 7350mm		

### 主要部件/ Main Parts

#### 发动机 Engine

型号 Model	16V4000
额定功率/转速 Rated Power/Speed	2013 kw 2700 HP / 1800 rpm
最大扭矩/转速 Max. Torque/Speed	11310Nm / 1700 rpm
*选装 Optional	QSK60

#### 电传动 Electric Drive

交流电传动系统 Drive System	GE320AC drive system
主发电机型号 Alternator	GTA41B
牵引电机型号 Traction Motor	GDY114
总减速比 Ratio	32.62:1
*选装 Optional	XCMG交流电传动系统 XCMG 320 AC drive system

#### 轮胎与轮辋 Tires And Rims

标准轮胎 Standard Tire	53/80R63无内胎、全钢子午线轮胎
标准轮辋 Standard Rim	36.00/5.0
*选装 Optional	56/80R63

#### 驾驶室 Cab

类型 Type	ROPS&FOPS 驾驶室 ROPS&FOPS Cab
---------	-----------------------------

#### 制动系统 Brake System

行车制动 Service Brakes	全液压油冷湿盘式制动系统 Oil-cooled, all hydraulically actuated braking system, multiple disc brakes at each wheel
电制动 Electric Dynamic Retarder	最大功率4026 kw Max. 4026 kw

#### 前悬架 Front Suspension

独立悬架, 油气悬架缸	Independent, hydro-pneumatic suspension
-------------	---

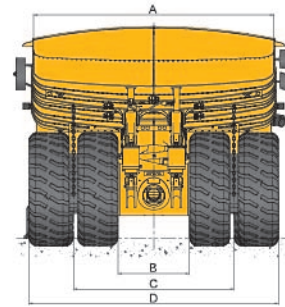
#### 液压系统 Hydraulic System

转向 Steering	流量放大式动力转向, 辅助转向由蓄能器自动提供
举升时间 Hoist Time(Power-up Loaded)	24 s

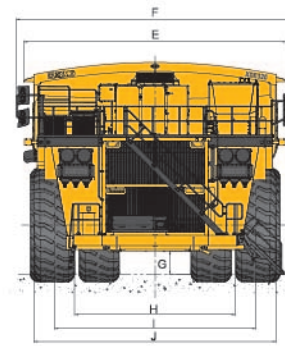
#### 电气系统 Electrical System

电压 Voltage	24 V
------------	------

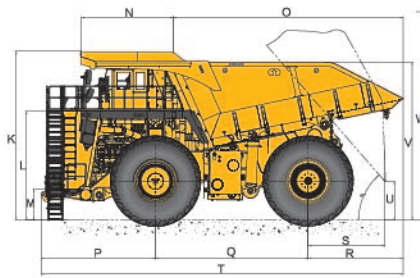
材料和规格可随时间改变, 恕不另行通知。  
Materials and specifications in the catalogue are subject to change at anytime without notice.



A:8630 B:2400 C:5360 D:8325



E:9600 F:9100 G:800 H:4870  
I:6215 J:7560



K:7350 L:4350 M:1460 N:5610  
O:9750 P:4500 Q:6350 R:4485  
S:3720 T:15360 U:1525 V:7040  
W:15360

# XDE400双桥刚性矿车

## DOUBLE AXLE RIGID DUMP TRUCK



### 性能参数/ Performance Parameters

额定载重 Rated Payload	400000kg		
空载车重 Empty Weight	260000kg		
整车总质量 Gross Vehicle Weight	660000kg		
驱动形式 Drive Style	4 × 2		
最高车速 Max. Speed	60km/h		
最大爬坡度 Max. Gradeability	22.3%		
最小转弯直径 Min. Turning Diameter	34m		
重量分布 Weight Distribution	空载 Empty	前桥Front 50%	后桥 Rear 50%
	满载 Loaded	前桥Front 32%	后桥 Rear 68%
工作容量 (L) Service Capacities	燃油Fuel 5300	液压油 Hydraulic system 1700	
	冷却系统 Cooling system 1100	曲轴箱Crankcase 390	
	平装 Struck 183m³	堆装 2:1 heaped 2:1 250m³	
货箱标准容积 Body Capacity	183m³		
外形尺寸 (空载, 长×宽×高) Overall dimension (EMPTY, L × W × H)	15700 × 10000 × 8000mm		

### 主要部件/ Main Parts

#### 发动机 Engine

型号 Model	20V4000
额定功率/转速 Rated Power/Speed	2800 kw 3750 HP / 1800 rpm
最大扭矩/转速 Max. Torque/Speed	12920 Nm / 1700 rpm

#### 电传动 Electric Drive

交流电传动系统 Drive System	GE 400AC drive system	Siemens MMT400 drive system
主发电机型号 Alternator	GTA39	YJ177B
牵引电机型号 Traction Motor	GDY135	2GA03
总减速比 Ratio	32.62:1	43.69

#### 轮胎与轮辋 Tires And Rims

标准轮胎 Standard Tire	59/80R63无内胎、全钢子午线轮胎
标准轮辋 Standard Rim	44.00/5.0

#### 驾驶室 Cab

类型 Type	ROPS&FOPS 驾驶室 ROPS&FOPS Cab
---------	-----------------------------

#### 制动系统 Brake System

行车制动 Service Brakes	全液压油冷湿盘式制动系统 Oil-cooled, all hydraulically actuated braking system, multiple disc brakes at each wheel
电制动 Electric Dynamic Retarder	最大功率4800 kw Max. 4800 kw

#### 前悬架 Front Suspension

独立悬架, 油气悬架缸	Independent, hydro-pneumatic suspension
-------------	---

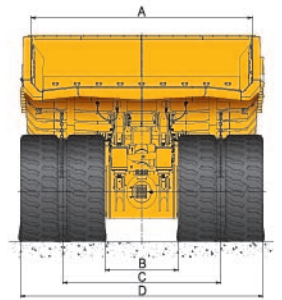
#### 液压系统 Hydraulic System

转向 Steering	流量放大式动力转向, 辅助转向由蓄能器自动提供
举升时间 Hoist Time(Power-up Loaded)	28 s

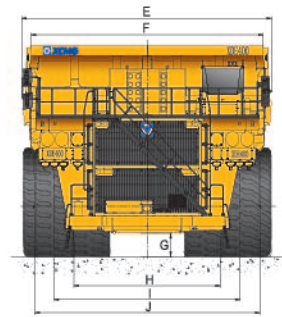
#### 电气系统 Electrical System

电压 Voltage	24 V
------------	------

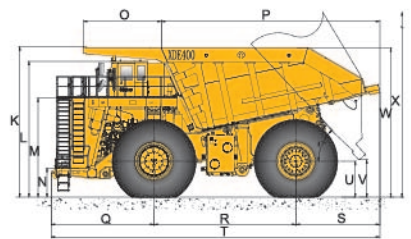
材料和规格可随时间改变, 恕不另行通知。  
Materials and specifications in the catalogue are subject to change at anytime without notice.



A: 8750 B:2763 C:6096  
D: 9429



E:10120 F:9485 G:920  
H:5210 I:6715 J:8200



K:8080 L:6270 M:4650 N:1330  
O:5470 P:10010 Q:5110 R:6650  
S:4200 T:15700 U:1730 V:2480  
W:7355 X:15930





## 电传动洒水车 ELECTRIC DRIVE SPRINKLING TRUCK

徐工电传动洒水车是建立在电传动自卸车底盘技术基础上成功研制的多用途洒水车，可用于大型露天矿山、建筑工程和水利工程的降尘、消防、冲爆堆和输送工业用水等。该产品拥有全洒、高洒、低洒、重力洒、高压水炮等多种作业形式；具有适应性强、高效可靠、洒水量方便可调、连续洒布里程长、操作方便等优点；采用强力箱内水循环防冻措施，可有效防止低温结冻，保证车辆在高寒地区作业自如。

XCMG electric-drive watering cart is a kind of multi-purpose watering cart which is researched and developed successfully based on the technology of electric-drive dump truck chassis. It can be used for dust suppression, firefighting, flushing muck pile and industrial water transmission in large open pit mines, construction machinery and hydraulic engineering. This product has various kinds of operating forms including all-round watering, high and low watering, gravity watering and water cannon. It possesses the advantages of great adaptability, high efficiency and reliability, adjustable watering volume, long mileage of continuous spraying and easy operation.

Adopting the strong inside water-cycling anti-freezing measures can effectively prevent the freeze in low temperature and ensure that the cart can work flexibly in high-cold areas.

## XDE100S电传动洒水车 ELECTRIC DRIVE SPRINKLING TRUCK

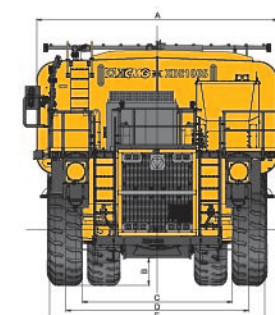


### 性能参数/ Performance Parameters

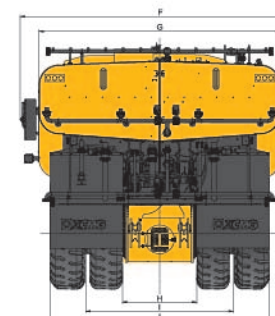
额定容积 Rated Capacity	105 m <sup>3</sup>		
空载车重 Empty Weight	100000 kg		
整车总质量 Gross Vehicle Weight	200000 kg		
驱动形式 Drive Style	4×2		
最高车速 Max. Speed	50 km/h		
最大爬坡度 Max. Gradeability	20 %		
最小转弯直径 Min. Turning Diameter	22 m		
重量分布 Weight Distribution	空载 Empty	前桥Front 50%	后桥 Rear 50%
	满载 Loaded	前桥Front 33%	后桥 Rear 67%
水箱标准容积 Body Capacity	额定装载容积 105 m <sup>3</sup>	有效装载容积	100 m <sup>3</sup>
外形尺寸 (空载, 长×宽×高) Overall dimension (EMPTY, L×W×H)	11480×7015×6170 mm		

### 主要部件/ Main Parts

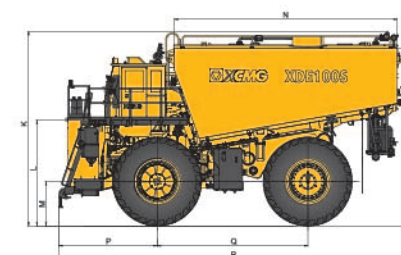
<b>发动机 Engine</b>	
型号 Model	16V2000
额定功率/转速 Rated Power/Speed	970 kw 1301HP / 1800 rpm
最大扭矩/转速 Max. Torque/Speed	5288Nm / 1500 rpm
*选配Optional	QSK38
<b>电传动 Electric Drive</b>	
交流电传动系统 Drive System	XCMG 130AC
主发电机型号 Alternator	XCMG-A920P
牵引电机型号 Traction Motor	XCMG-M360
总减速比 Ratio	33.85:1
<b>轮胎与轮辋 Tires And Rims</b>	
标准轮胎 Standard Tire	30.00R51无内胎、全钢子午线轮胎 30.00R51 Tubeless, all-steel radial tires
*选装 Optional	33.00R51无内胎、全钢子午线轮胎 33.00R51 Tubeless, all-steel radial tires
<b>驾驶室 Cab</b>	
类型 Type	ROPS&FOPS 驾驶室 ROPS&FOPS Cab
<b>制动系统 Brake System</b>	
行车制动 Service Brakes	全液压干盘式制动系统 All hydraulically actuated dry disc brakes at each wheel
电制动 Electric Dynamic Retarder	最大功率1400 kw Max.1400 kw
<b>前悬架 Front Suspension</b>	
独立悬架, 油气悬架缸	Independent, hydro-pneumatic suspension
<b>液压系统 Hydraulic System</b>	
转向 Steering	流量放大式动力转向, 辅助转向由蓄能器自动提供 Flow amplified power steering. Supplementary steering automatically supplied by accumulators
<b>电气系统 Electrical System</b>	
	24 V



A: 6200 B: 570 C: 3850  
D: 4700 E: 5530



F: 7015 G: 6200 H: 2030  
I: 3930 J: 5650



K: 6170 L: 3290 M: 1290 N: 7250  
O: 5720 P: 3190 Q: 4900 R: 11480

材料和规格可随时改变，恕不另行通知。  
Materials and specifications in the catalogue are subject to change at anytime without notice.





# XDR80TE电动三桥刚性矿车 TRI AXLE RIGID MINING TRUCK



## 三桥刚性矿车 TRI AXLE RIGID MINING TRUCK

三桥刚性矿车可广泛应用于矿山开采、采石场等；具有爬坡角度大，适应工况多，运输效率高的特点；徐工开发了经典的双桥刚性矿车，还开发了兼具可靠性和低运营成本的三桥刚性矿车，实现了对中高端矿山和土石方运输市场的全面覆盖。

Tri axle rigid mining truck can be widely used in mining, quarry, etc. It has the characteristics of large slope climbing Angle, more suitable working conditions and high transport efficiency. XCMG has developed the classic double axle rigid mining truck, and also developed the tri axle rigid mining truck with both reliability and low operating cost, so as to achieve the full coverage of the middle and high-end mining and earth-rock transportation market.

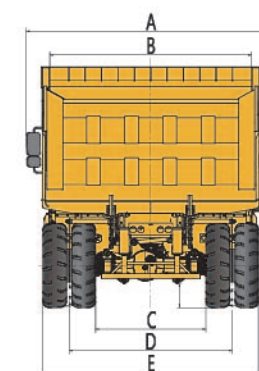
### 性能参数/ Performance Parameters

额定载重 Rated Payload	72000kg		
空载车重 Empty Weight	38000kg		
整车总质量 Gross Vehicle Weight	110000kg		
驱动形式 Axle configuration	6 × 4		
最高车速 Max. Speed	43km/h		
最大爬坡度 Max. Gradeability	30%		
最小转弯直径 Min. Turning Diameter	22m		
重量分布 Weight Distribution	空载 Empty	前桥Front 45%	后桥 Rear 55%
	满载 Loaded	前桥Front 21%	后桥 Rear 79%
货厢标准容积 Body Capacity	40m <sup>3</sup>		
	XDR80TE 1(充电型)	XDR80TE 2(侧换电)	XDR80TE 3(上换电)
外形尺寸 Overall dimension	9374 × 4338 × 4116	9924 × 4338 × 4060	9374 × 4338 × 4186
驱动总成型号 Model	DET6S360	EV430-7E200K	EV430-7E200K
额定/峰值功率 Motor Rated/Peak power	(210+210)kW/(350+350kW)	430kw/550kw	430kw/550kw
额定/峰值扭矩 Max.Torque/Speed	(1100+1100)Nm/(1800+1800)Nm	2737Nm/4800Nm	2737Nm/4800Nm
主减速比 Differential	4.625:1	4.625:1	4.625:1
轮边速比 Planetarya	3.487:1	3.487:1	3.487:1
总速比 Total Reduction	16.086:1	16.086:1	16.086:1

### 主要部件/ Main Parts

<b>轮胎与轮辋 Tires And Rims</b>	
标准轮胎 Standard Tire	16 R25 全钢子午轮胎
标准轮辋 Standard Rim	11.25/2.0
<b>驾驶室 Cab</b>	
类型 Type	ROPS&FOPS驾驶室 ROPS&FOPS Cab
<b>制动系统 Brake System</b>	
类型 Type	气压盘式制动 Pneumatic Disc Brake
<b>悬架系统 Suspension</b>	
类型 Type	三桥全油气悬架系统 Hydraulic full suspension on all wheels
前悬架 Front Suspension	麦弗逊独立前悬架 McPherson, Hydro-pneumatic suspension
后悬架 Rear Suspension	油气平衡悬架 Hydro-Pneumatic Balanced Suspension
<b>液压系统 Hydraulic System</b>	
转向 Steering	全液压转向系统，具备应急转向功能 Full Hydraulic Steering System, Emergency steering automatically applied by accumulator
<b>电气系统 Electrical System</b>	
	24 V

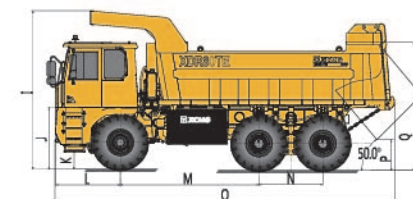
材料和规格可随时改变，恕不另行通知。  
Materials and specifications in the catalogue are subject to change at anytime without notice.



A:4888 B:3900 C:2010  
D:2984 E:3950



F:4338 G:364 H:3094



I:4060 J:1697 K:514  
L:1766 M:4350 N:1750  
O:9924 P:770 Q:3244  
R:8791



# XDR70T三桥刚性矿车

## TRI AXLE RIGID MINING TRUCK



# XDR80T三桥刚性矿车

## TRI AXLE RIGID MINING TRUCK



### 性能参数/Performance Parameters

额定载重 Payload	60000kg		
空车重量 Empty Weight	33500kg		
整车总质量 Gross Vehicle Weight (GVW)	93500kg		
驱动形式 Axle configuration	6×4		
最高车速 Max. vehicle speed	37km/h		
最大爬坡度 Max. gradeability	30%		
最小转弯直径 Min. turning diameter	22m		
重量分布 Weight Distribution	空载 Empty	前桥 Front 35%	中、后桥 Rear 65%
	满载 Loaded	前桥 Front 20%	中、后桥 Rear 80%
货厢标准容积 Body Capacity	2:1堆装 (Heaped SAE 2:1)	30~40m³	
外形尺寸 (空载, 长×宽×高) Overall dimension (EMPTY, L×W×H)	9170×4273×4140mm		

### 主要部件/Main Parts

<b>发动机 Engine</b>		
型号 Model	YC6K460-GT30	
额定功率/转速 Rated Power/Speed	338kw/1900rpm	
最大扭矩/转速 Max. Torque/Speed	2200Nm/1000~1500rpm	
<b>传动系 Drivetrain</b>		
变速箱 Transmission	法士特7DS220	
驱动桥 Drive Axle	主减速比 Differential Ratio	3.7:1
	轮边速比 Planetary Reduction	3.478:1
	总速比 Total Reduction Ratio	12.87:1
<b>轮胎与轮辋 Tires And Rims</b>		
标准轮胎 Standard Tire	14.00R25	
标准轮辋 Standard Rim	10.00-25	
<b>驾驶室 Cab</b>		
类型 Type	FOPS驾驶室 FOPS Cab	
<b>制动系统 Brake System</b>		
类型 Type	鼓式制动	
<b>悬架系统 Suspension</b>		
类型 Type	三桥全油气悬架系统 Hydraulic full suspension on all wheels	
前悬架 Front Suspension	非独立悬架 Non-independent suspension	
后悬架 Rear Suspension	A型架+油气平衡悬架 A-frame+Balanced hydro-pneumatic suspension	
<b>液压系统 Hydraulic System</b>		
转向 Steering	全液压转向系统, 具备应急转向功能 Full Hydraulic Steering System, Emergency steering automatically applied by accumulator	
<b>电气系统 Electrical System</b>		
24 V		

材料和规格可随时改变, 恕不另行通知。  
Materials and specifications in the catalogue are subject to change at anytime without notice.

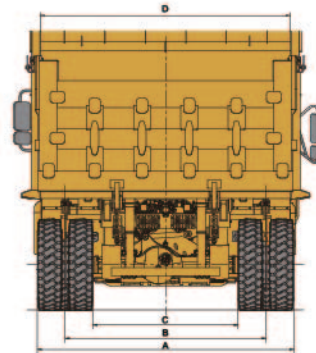
### 性能参数/Performance Parameters

额定载重 Rated Payload	72000kg		
空车重量 Empty Weight	34000kg		
整车总质量 Gross Vehicle Weight	106000kg		
驱动形式 Drive Style	6×4		
最高车速 Max. Speed	45km/h		
最大爬坡度 Max. Gradeability	30%		
最小转弯直径 Min. Turning Diameter	22m		
重量分布 Weight Distribution	空载 Empty	前桥 Front 33%	中、后桥 Rear 67%
	满载 Loaded	前桥 Front 20%	中、后桥 Rear 80%
货厢标准容积 Body Capacity	2:1堆装 (Heaped SAE 2:1)	30~50m³	
外形尺寸 (空载, 长×宽×高) Overall dimension (EMPTY, L×W×H)	9374×4338×4116mm		

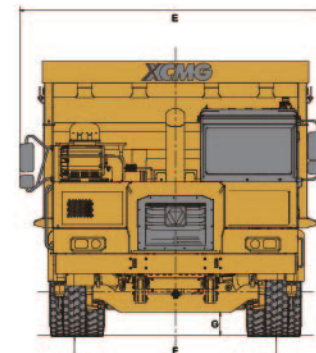
### 主要部件/Main Parts

<b>发动机 Engine</b>		
型号 Model	YC6K480-GT30	
额定功率/转速 Rated Power/Speed	353kw/1900rpm	
最大扭矩/转速 Max. Torque/Speed	2200Nm/1100~1500rpm	
<b>传动系统 Drivetrain</b>		
变速箱 Transmission	法士特 FAST 8DS240A	
驱动桥 Drive Axle	主减速比 Differential Ratio	4.625:1
	轮边速比 Planetary Reduction	3.478:1
	总速比 Total Reduction Ratio	16.086:1
<b>轮胎与轮辋 Tires And Rims</b>		
标准轮胎 Standard Tire	16.00R25	
标准轮辋 Standard Rim	11.25/2.0	
<b>驾驶室 Cab</b>		
类型 Type	FOPS驾驶室 FOPS Cab	
<b>制动系统 Brake System</b>		
类型 Type	气压盘式制动 Pneumatic Disc Brake	
<b>悬架系统 Suspension</b>		
类型 Type	三桥全油气悬架系统 Hydraulic full suspension on all wheels	
前悬架 Front Suspension	麦弗逊独立前悬架 McPherson, Hydro-pneumatic suspension	
后悬架 Rear Suspension	油气平衡悬架 Hydro-Pneumatic Balanced Suspension	
<b>液压系统 Hydraulic System</b>		
转向 Steering	全液压转向系统, 具备应急转向功能 Full Hydraulic Steering System, Emergency steering automatically applied by accumulator.	
<b>电气系统 Electrical System</b>		
24V		

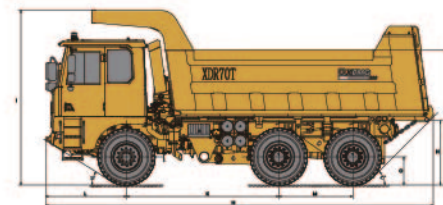
材料和规格可随时改变, 恕不另行通知。  
Materials and specifications in the catalogue are subject to change at anytime without notice.



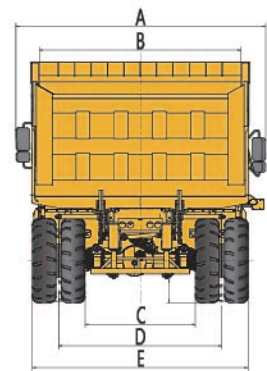
A:3796 B:2972 C:2148  
D:3700



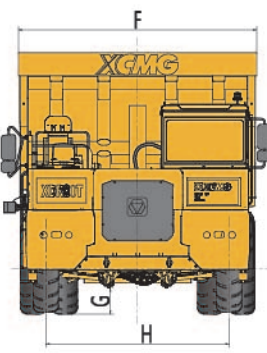
E:4602 F:3050 G:355



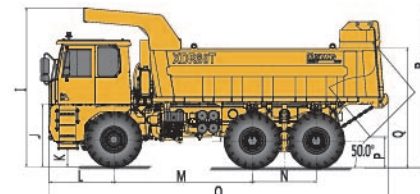
H:9170 I:4140 J:3203  
K:3600 L:1914 M:1750  
N:1525 O:665



A:4888 B:3900 C:2010  
D:2984 E:3950



F:4338 G:364 H:3094



I:4116 J:1697 K:514  
L:1766 M:3800 N:1750  
O:9374 P:770 Q:3400  
R:8661



# XDR80TA三桥刚性矿车

## TRI AXLE RIGID MINING TRUCK



### 性能参数/Performance Parameters

额定载重 Rated Payload	76000kg		
空载车重 Empty Weight	34000kg		
整车总质量 Gross Vehicle Weight	110000kg		
驱动形式 Drive Style	6×4		
最高车速 Max. Speed	45km/h		
最大爬坡度 Max. Gradeability	30%		
最小转弯直径 Min. Turning Diameter	22m		
重量分布 Weight Distribution	空载 Empty	前桥 Front 33%	中、后桥 Rear 67%
	满载 Loaded	前桥 Front 20%	中、后桥 Rear 80%
货厢标准容积 Body Capacity	2:1堆装 (Heaped SAE 2:1)		30~50m <sup>3</sup>
外形尺寸 (空载, 长×宽×高) Overall dimension (EMPTY, L×W×H)	9374×4338×4326mm		

### 主要部件/Main Parts

#### 发动机 Engine

型号 Model	YC6K480-GT30
额定功率/转速 Rated Power/Speed	353kw/1900rpm
最大扭矩/转速 Max. Torque/Speed	2200Nm/1100~1500rpm

#### 传动系统 Drivetrain

变速箱 Transmission	法士特 FAST 8DS240A	
驱动桥 Drive Axle	主减速比 Differential Ratio	4.444:1
	轮边速比 Planetary Reduction	3.81:1
	总速比 Total Reduction Ratio	16.93:1

#### 轮胎与轮辋 Tires And Rims

标准轮胎 Standard Tire	16.00R25
标准轮辋 Standard Rim	11.25/2.0

#### 驾驶室 Cab

类型 Type	FOPS驾驶室 FOPS Cab
---------	------------------

#### 制动系统 Brake System

类型 Type	气压盘式制动 Pneumatic Disc Brake
---------	-----------------------------

#### 悬架系统 Suspension

类型 Type	三桥全油气悬架系统 Hydraulic full suspension on all wheels
前悬架 Front Suspension	麦弗逊独立前悬架 McPherson, Hydro-pneumatic suspension
后悬架 Rear Suspension	油气平衡悬架 Hydro-Pneumatic Balanced Suspension

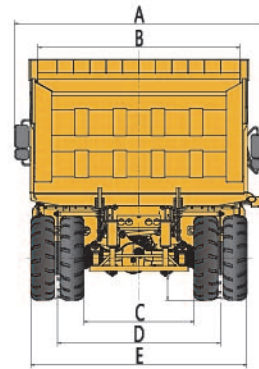
#### 液压系统 Hydraulic System

转向 Steering	全液压转向系统, 具备应急转向功能 Full Hydraulic Steering System, Emergency steering automatically applied by accumulator.
-------------	--

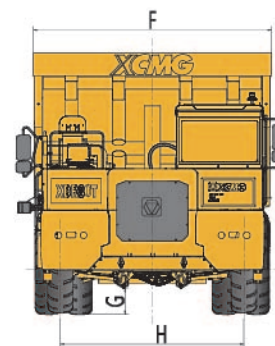
#### 电气系统 Electrical System

电压 Voltage	24V
------------	-----

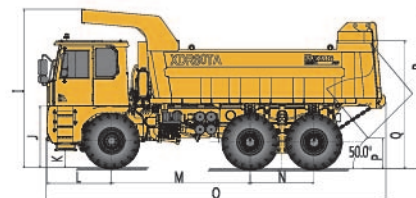
材料和规格可随时改变, 恕不另行通知。  
Materials and specifications in the catalogue are subject to change at anytime without notice.



A:4888 B:3900 C:2010  
D:2984 E:3950



F:4338 G:360 H:3094



I:4326 J:1697 K:514  
L:1766 M:3800 N:1750  
O:9374 P:770 Q:3610  
R:8816

# XDR90T三桥刚性矿车

## TRI AXLE RIGID MINING TRUCK



### 性能参数/Performance Parameters

额定载重 Rated Payload	81000kg		
空载车重 Empty Weight	37000kg		
整车总质量 Gross Vehicle Weight	118000kg		
驱动形式 Drive Style	6×4		
最高车速 Max. Speed	41.2km/h		
最大爬坡度 Max. Gradeability	30%		
最小转弯直径 Min. Turning Diameter	22m		
重量分布 Weight Distribution	空载 Empty	前桥 Front 33%	中、后桥 Rear 67%
	满载 Loaded	前桥 Front 20%	中、后桥 Rear 80%
货厢标准容积 Body Capacity	2:1堆装 (Heaped SAE 2:1)		30~50m <sup>3</sup>
外形尺寸 (空载, 长×宽×高) Overall dimension (EMPTY, L×W×H)	9374×4338×4496mm		

### 主要部件/Main Parts

#### 发动机 Engine

型号 Model	YC6K560-GT30
额定功率/转速 Rated Power/Speed	412kw/1900rpm
最大扭矩/转速 Max. Torque/Speed	2500Nm/1100~1500rpm

#### 传动系统 Drivetrain

变速箱 Transmission	法士特 FAST 8DS260	
驱动桥 Drive Axle	主减速比 Differential Ratio	4.625:1
	轮边速比 Planetary Reduction	4.47:1
	总速比 Total Reduction Ratio	20.674:1

#### 轮胎与轮辋 Tires And Rims

标准轮胎 Standard Tire	16.00R25
标准轮辋 Standard Rim	11.25/2.0

#### 驾驶室 Cab

类型 Type	FOPS驾驶室 FOPS Cab
---------	------------------

#### 制动系统 Brake System

类型 Type	气压盘式制动 Pneumatic Disc Brake
---------	-----------------------------

#### 悬架系统 Suspension

类型 Type	三桥全油气悬架系统 Hydraulic full suspension on all wheels
前悬架 Front Suspension	麦弗逊独立前悬架 McPherson, Hydro-pneumatic suspension
后悬架 Rear Suspension	油气平衡悬架 Hydro-Pneumatic Balanced Suspension

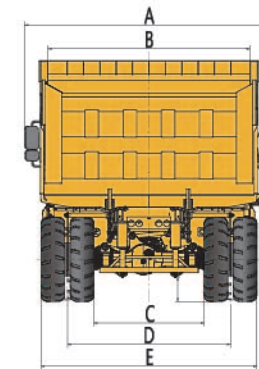
#### 液压系统 Hydraulic System

转向 Steering	全液压转向系统, 具备应急转向功能 Full Hydraulic Steering System, Emergency steering automatically applied by accumulator.
-------------	--

#### 电气系统 Electrical System

电压 Voltage	24V
------------	-----

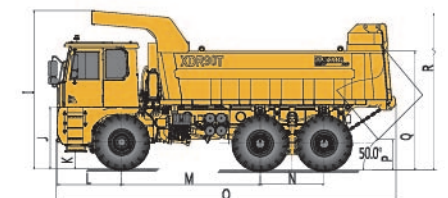
材料和规格可随时改变, 恕不另行通知。  
Materials and specifications in the catalogue are subject to change at anytime without notice.



A:4888 B:3900 C:2010  
D:2984 E:3950



F:4338 G:355 H:3094



I:4496 J:1697 K:514  
L:1766 M:3800 N:1750  
O:9374 P:770 Q:3780  
R:8941



# XDR100T三桥刚性矿车

## TRI AXLE RIGID MINING TRUCK



### 性能参数/ Performance Parameters

额定载重 Rated Payload	91000kg		
空载车重 Empty Weight	59000kg		
整车总质量 Gross Vehicle Weight	150000kg		
驱动形式 Axle configuration	6 × 4		
最高车速 Max. Speed	40km/h		
最大爬坡度 Max. Gradeability	26%		
最小转弯直径 Min. Turning Diameter	24m		
重量分布 Weight Distribution	空载 Empty	前桥Front 40%	后桥 Rear 60%
	满载 Loaded	前桥Front 20%	后桥 Rear 80%
货厢标准容积 Body Capacity	堆装 2:1 heaped 2:1	52~70m³	
外形尺寸 (空载, 长×宽×高) Overall dimension (EMPTY, L×W×H)	12000 × 4990 × 5150mm		

### 主要部件/ Main Parts

#### 发动机 Engine

型号 Model	YC6TD800-T301
额定功率/转速 Rated Power/Speed	588kw(800hp)/1900rpm
最大扭矩/转速 Max. Torque/Speed	3200Nm/(1200~1500)rpm

#### 传动系统 Drivetrain

变速箱 Transmission	AVTEC M6620AR	
驱动桥 Drive Axle	主减速比Differential	4.625:1
	轮边速比Planetary	5.526:1
	总速比/Total Reduction	25.56:1

#### 轮胎与轮辋 Tires And Rims

标准轮胎 Standard Tire	21.00R33
标准轮辋 Standard Rim	33-15.00/3.0

#### 驾驶室 Cab

类型 Type	ROPS&FOPS驾驶室 ROPS&FOPS Cab
---------	----------------------------

#### 制动系统 Brake System

前桥制动 Front Brake	干式制动盘, 总制动面积1716 cm² Dry disc, diameter Pad area, total 1,716 cm²
后桥制动 Rear Brake	徐工油冷、湿式制动器、完全隔绝污物与水。总制动面积63,200cm² XCMG oil cooled, multiple disc, completely sealed from dirt and water. Breaking surface, total 63,200 cm²

#### 悬架系统 Suspension

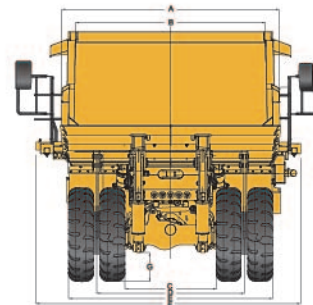
类型 Type	三桥全油气悬架系统 Hydraulic full suspension on all wheels
前悬架 Front Suspension	烛式悬架 Sliding pillar suspension
后悬架 Rear Suspension	油气平衡悬架 Hydro-Pneumatic Balanced Suspension

#### 液压系统 Hydraulic System

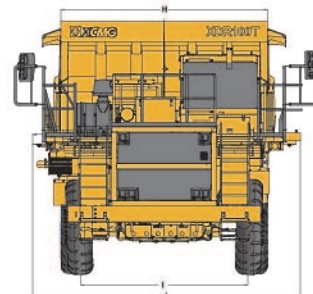
转向 Steering	全液压转向系统, 具备应急转向功能 Full Hydraulic Steering System, Emergency steering automatically applied by accumulator
-------------	--

#### 电气系统 Electrical System

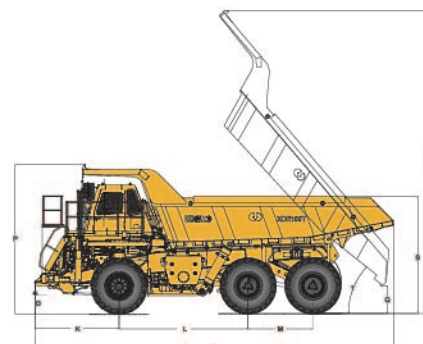
24 V



A:4420 B:4140 C:1690  
D:2940 E:4185 F:4990  
G:578



H:4460 I:3290 J:4990



K:2803 L:4300 M:2154 N:12000  
O:644 P:5150 Q:928 R:10432  
S:4290 T:41



## 铰接式自卸车

### ARTICULATED DUMP TRUCK

有色金属矿山及水利工程的特殊施工环境, 要求矿山设备必须具有出色的越野性能来确保持久作业。徐工铰接式自卸车凭借强大的技术支持, 致力于为客户提供完备的施工解决方案。产品以强大的动力和卓越的整机性能, 更低的维护成本为您提供更高的效率, 带来丰厚的投资回报。

Since non-ferrous metal mining and water conservancy works are of special construction environment, mining equipments are required to have excellent cross-country performance to ensure the durability in operation. Thanks to its strong technical support, XCMG ADT is dedicated to providing customers with complete construction solutions. By virtue of its strong power, superexcellent performance, excessively low maintenance cost, the product is bound to bring you higher working efficiency and handsome return on investment.



# XDA30铰接式自卸车

## ARTICULATED DUMP TRUCK

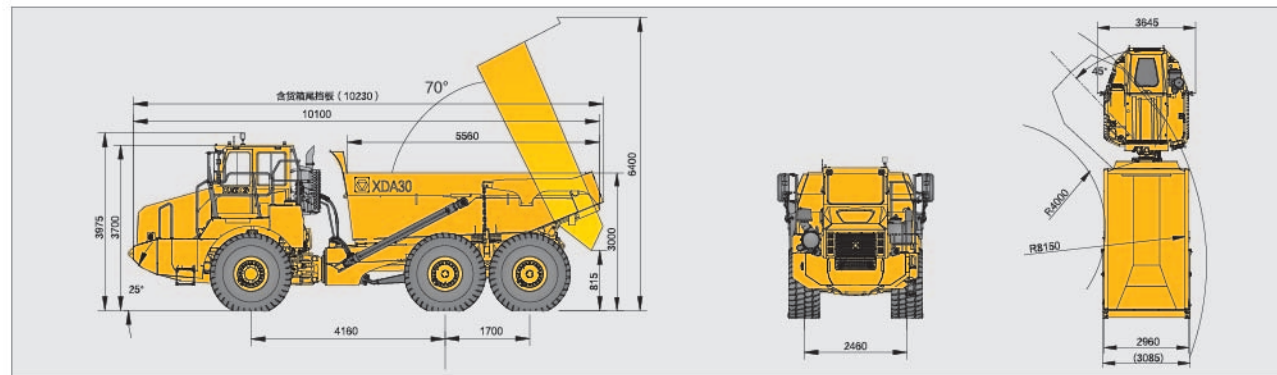


### 性能参数/ Performance Parameters

额定载重 Payload	30000 kg	
空载重量 Empty Weight	26700 kg	
整车总重量 Gross Vehicle Weight	56700 kg	
驱动形式 Drive Style	6x6	
最高车速 Max. Speed	49 km/h	
最大爬坡度 Max. Gradeability	45%	
最大转向角 Max. Steering Angle	±45°	
货箱容积 Body Capacity	平装 Struck	13.14 m <sup>3</sup>
	2:1堆装 2:1heaped	17.5/18.1 m <sup>3</sup>
外形尺寸 (空载, 长×宽×高) Overall dimension (EMPTY, L×W×H)	10355x3200x3700 mm	

### 主要部件/ Main Parts

<b>发动机 Engine</b>	
型号 Model	QSM11
额定功率/转速 Rated Power/Speed	280/2100 kw/rpm
最大扭矩/转速 Max. Torque/Speed	1898/1400 Nm/rpm
<b>传动系统 Drivetrain</b>	
变速箱 Transmission	RTO-22110B
档位 Speed range	10F2R
<b>制动系统 Brake System</b>	
制动系统 Braking System	鼓式制动 Drum brake
<b>举升系统 Hoist System</b>	
举升时间 Hoist Time /s	13
举升角度 Hoist Angle	70°
<b>驾驶室 Cab</b>	
驾驶室 Cab	FOPS cab
<b>轮胎 Tires</b>	
轮胎 Tires	750/65R25 (选装Optiona 23.5R25)
<b>电气系统 Electrical System</b>	
电气系统 Electrical System	24 V



材料和规格可随时改变, 恕不另行通知。  
Materials and specifications in the catalogue are subject to change at anytime without notice.

# XDA45铰接式自卸车

## ARTICULATED DUMP TRUCK

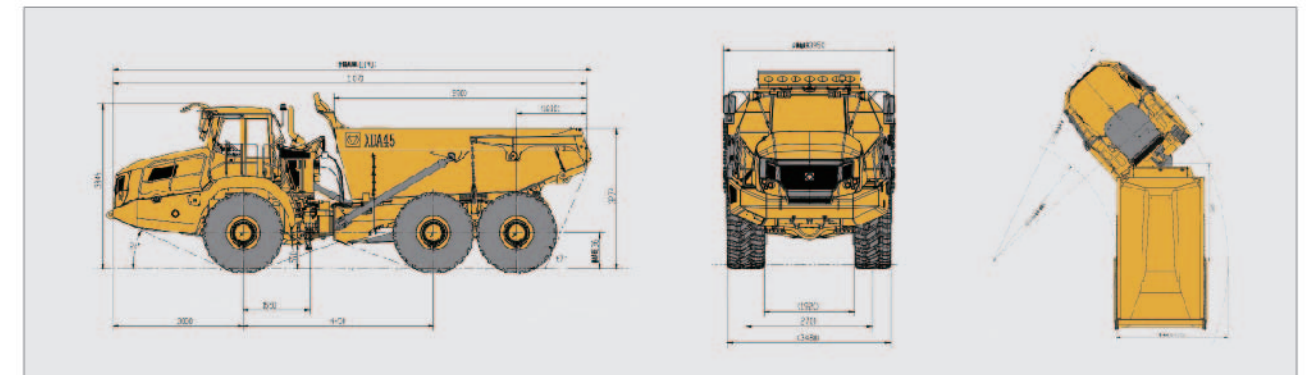


### 性能参数/ Performance Parameters

额定载重 Payload	41000kg	
空载重量 Empty Weight	34000 kg	
整车总重量 Gross Vehicle Weight	75000kg	
驱动形式 Drive Style	6x6	
最高车速 Max. Speed	51km/h	
最大爬坡度 Max. Gradeability	45%	
最大转向角 Max. Steering Angle	±42°	
货箱容积 Body Capacity	平装 Struck	19.5/20.5m <sup>3</sup>
	2:1堆装 2:1heaped	25/26m <sup>3</sup>
外形尺寸 (空载, 长×宽×高) Overall dimension (EMPTY, L×W×H)	11070 × 3950 × 3846mm	

### 主要部件/ Main Parts

<b>发动机 Engine</b>	
型号 Model	OM502
额定功率/转速 Rated Power/Speed	350/1800 kw/rpm
最大扭矩/转速 Max. Torque/Speed	2300/1300 Nm/rpm
<b>传动系统 Drivetrain</b>	
变速箱 Transmission	Allison 4800 ORS_P_R
档位 Speed range	7F1R
<b>制动系统 Brake System</b>	
制动系统 Braking System	湿盘式制动系统 Wet disc brake
<b>举升系统 Hoist System</b>	
举升时间 Hoist Time /s	12
举升角度 Hoist Angle	70°
<b>驾驶室 Cab</b>	
驾驶室 Cab	FOPS cab
<b>轮胎 Tires</b>	
轮胎 Tires	29.5R25
<b>电气系统 Electrical System</b>	
电气系统 Electrical System	24 V



材料和规格可随时改变, 恕不另行通知。  
Materials and specifications in the catalogue are subject to change at anytime without notice.



# XDA45U 铰接式自卸车

## ARTICULATED DUMP TRUCK

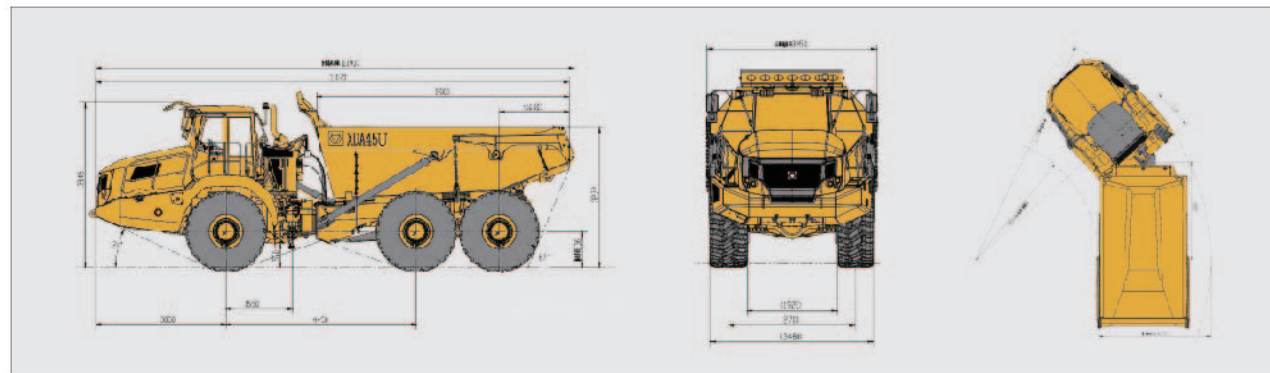


### 性能参数/ Performance Parameters

额定载重 Payload	41000kg	
空载重量 Empty Weight	34000kg	
整车总重量 Gross Vehicle Weight	75000kg	
驱动形式 Drive Style	6×6	
最高车速 Max. Speed	51km/h	
最大爬坡度 Max. Gradeability	45%	
最大转向角 Max. Steering Angle	±42°	
货箱容积 Body Capacity	平装 Struck	19.5/20.5m <sup>3</sup>
	2:1堆装 2:1heaped	25/26m <sup>3</sup>
外形尺寸 (空载, 长×宽×高) Overall dimension (EMPTY, L×W×H)	11070×3950×3846mm	

### 主要部件/ Main Parts

发动机 Engine	
型号 Model	OM471 Euro V
额定功率/转速 Rated Power/Speed	390/1800kw/rpm
最大扭矩/转速 Max. Torque/Speed	2600/1300kw/rpm
传动系统 Drivetrain	
变速箱 Transmission	Allison 4800
档位 Speed range	7FIR
制动系统 Brake System	
制动系统 Braking System	湿盘式制动系统 Wet disc brake
举升系统 Hoist System	
举升时间 Hoist Time /s	12
举升角度 Hoist Angle	70°
驾驶室 Cab	
驾驶室 Cab	FOPS cab
轮胎 Tires	
轮胎 Tires	29.5R25
电气系统 Electrical System	
电气系统 Electrical System	24 V



材料和规格可随时改变, 恕不另行通知。  
Materials and specifications in the catalogue are subject to change at anytime without notice.



## 移动破碎筛分

### MOBILE CRUSHERS AND SCREENERS

在矿山开采、骨料生产、资源再生领域提供成套性破碎筛分解决方案, 根据客户需求和实际工况要求, 以专业的技术提供更可靠、更安全、更环保的移动式和固定模块化产品, 为客户创造更多的价值。

Provide full-process crushing and screening solutions for mining, aggregate production and resource recycling. According to the actual working conditions, we provide more reliable, safer and more environmentally friendly mobile and fixed modular products with professional technology to create more value for users.



## 移动颚式破碎站 MOBILE JAW CRUSHERS



**用途:** 用于一级和预破碎阶段  
**Application:** For primary and pre crushing stages.

**适用于:** 中高硬度的砂石骨料、再生骨料及矿山应用  
**Applicable to:** Applicable to: Medium and high hardness aggregate, recycled aggregate and mine application.

### 技术特点 TECHNICAL CHARACTERISTICS

- 采用进口品牌发动机, 动力强劲高效、能耗低。  
Equipped with imported engines, power is more powerful and fuel saving.
- 搭配超长颚板的破碎主机, 物料流动性更顺畅, 破碎能力更强。  
With the long jaw plate, the material flow is smoother and more broken.
- 排料口液压调节, 操作更方便。  
Discharge port hydraulic adjustment, operation is more convenient.
- 配备预筛分机, 产能更高。  
Equipped with pre screening extension, higher capacity.
- 智能连续性给料系统, 物料流动更顺畅, 生产更连续。  
Intelligent continuous feeding system, material flow is smoother and production is more continuous.
- 无线遥控, 一键启停, 智能故障诊断, 实时监控、存储运行状态, 用户操作更方便。  
Wireless remote control, one-button start-stop, intelligent fault diagnosis, real-time monitoring and storage of running state, user operation is more convenient.
- 低压喷雾除尘、振动部件减振专业性设计, 整机更环保。  
Low pressure spray dedusting, vibration parts damping professional design, the whole machine is more environmentally friendly.
- 配置磁选机, 更高效分离金属制品。  
Equipped with magnetic separator to separate metal products more efficiently.
- 折叠式料斗、输送机, 结合更大离地间隙, 转场、运输更方便。  
Folding hopper, foldable conveyor, with larger clearance from the ground, more convenient for transit and transportation.

移动颚式破碎站 MOBILE JAW CRUSHERS

产品型号 Product model	XPE0810	XPE0912	XPE1215
最大喂料尺寸 Maximum feeding dimension	600mm	700mm	1100mm
破碎机开口尺寸 Crusher openings size	760 × 1000mm	870 × 1200mm	1200 × 1400mm
最大通过量 Maximum throughput	200 ~ 330t/h	500t/h	1000t/h
整机重量 Machine weight	50t	72t	150.7t
发动机品牌 Engine brand	康明斯CUMMINS/斯堪尼亚 SCANIA		
发动机功率 Engine power	268kw	364kw	438kw

材料和规格可随时改变, 恕不另行通知。  
Materials and specifications in the catalogue are subject to change at anytime without notice.

## 移动反击式破碎站 MOBILE IMPACT CRUSHERS



**用途:** 用于一级和二级破碎阶段  
**Application:** Used for crushing stage one and two.

**适用于:** 中软硬度砂石骨料、再生骨料  
**Applicable to:** Soft to medium-hard natural stone, Recycling.

### 技术特点 TECHNICAL CHARACTERISTICS

- 采用进口发动机, 动力更强劲、更省油;  
Equipped with imported engines, power is more powerful and fuel saving.
- 破碎机采用液力耦合器直驱, 传动更平稳、高效;  
The crusher is driven directly by hydraulic couplings, which is more stable and more efficient in transmission.
- 弧形板锤, 产能更大、粒型更优;  
The use of arc plate hammer has greater productivity and better grain shape.
- 双层独立预筛分机, 通过量更大, 超大筛分面积筛分机, 筛分效率更高;  
Double layer independent pre screening machine, through a larger volume, super sieving area screening machine, screening efficiency is higher.
- 折叠式料斗、输送机, 结合更大离地间隙, 转场、运输更方便;  
Folding hopper, foldable conveyor, with larger clearance from the ground, more convenient for transit and transportation.
- 智能连续性给料系统, 部件宽度逐渐变大, 物料流动更顺畅, 生产更连续;  
The intelligent continuous feeding system increases the widths of components gradually, makes material flow more smoothly and produces more continuous products.
- 无线遥控, 一键启停, 智能故障诊断, 实时监控、存储运行状态, 用户操作更方便;  
Wireless remote control, one-button start-stop, intelligent fault diagnosis, real-time monitoring and storage of running state, user operation is more convenient.
- 控制柜正压除尘、接地保护, 可靠性更高;  
The control cabinet has positive pressure dust removal, and earthing protection has higher reliability.
- 低压喷雾除尘、振动部件减振专业性设计, 整机更环保。  
Low pressure spray dedusting, vibration parts damping professional design, the whole machine is more environmentally friendly.

移动反击式破碎站 MOBILE IMPACT CRUSHERS

产品型号 Product model	XPF1112	XPF1214	XPF1214RS
最大喂料尺寸 Maximum feeding dimension	600mm	700mm	700mm
破碎机转子(直径×宽) Crusher rotor (Diameter x Width)	Φ1100 × 1200mm	Φ1200 × 1280mm	Φ1200 × 1280mm
最大通过量 Maximum throughput	80 ~ 350t/h	150 ~ 450t/h	150 ~ 450t/h
整机重量 Machine weight	52t	62t	69.4t
发动机品牌 Engine brand	康明斯CUMMINS/斯堪尼亚 SCANIA		
发动机功率 Engine power	364~371 kw	364~371 kw	364~371kw

材料和规格可随时改变, 恕不另行通知。  
Materials and specifications in the catalogue are subject to change at anytime without notice.



## 移动圆锥式破碎站 MOBILE CONE CRUSHERS



**用途：**用于二级和三级破碎阶段  
**Application:** Used for crushing stage two and three.

**适用于：**中高硬度的砂石骨料、矿山应用  
**Applicable to:** Medium and high hardness aggregate and mine application.

### 技术特点 TECHNICAL CHARACTERISTICS

- 采用进口发电机组，动力更强劲、更省油；  
Equipped with imported engines, power is more powerful and fuel saving.
- 配置外接动力电源装置，经济性更高；  
The external power supply is more economical.
- 破碎机采用电机驱动，传动更平稳、高效；  
Motor driven, more stable and efficient.
- 大行程破碎机、辅以破碎机负载检测及控制，破碎能力更大、粒型更优；  
Large stroke crusher, load monitoring and control, greater crushing capacity and better grain shape.
- 破碎机具有过载保护及清空功能，可靠性更高；  
Overload protection and clearance function, high reliability.
- 智能连续性给料系统，物料流动更顺畅，生产更连续；  
Intelligent continuous feeding system, material flow is smoother and production is more continuous.
- 无线遥控，一键启停，智能故障诊断，实时监控、存储运行状态，用户操作更方便；  
Wireless remote control, one-button start-stop, intelligent fault diagnosis, real-time monitoring and storage of running state, user operation is more convenient.
- 低压喷雾除尘、振动部件减振专业性设计，整机更环保；  
Low pressure spray dedusting, vibration parts damping professional design, the whole machine is more environmentally friendly.
- 可选配磁选机、金属探测仪及料位检测，系统保护更全面。  
Magnetic separators, metal detectors and material level meters can be selected. The system protection is more comprehensive.

移动圆锥式破碎站 MOBILE CONE CRUSHERS

产品型号 Product model	XPY1100	XPY1100RS	XPY1300
最大喂料尺寸 Maximum feeding dimension	240mm	240mm	280mm
动锥直径 Moving cone diameter	1160mm	1160mm	1300 mm
最大通过量 Maximum throughput	115 ~ 470t/h	115~470t/h	115 ~ 590t/h
整机重量 Machine weight	60t	63.8t	70t
发动机品牌 Engine brand	康明斯CUMMINS/斯堪尼亚 SCANIA		
发动机功率 Engine power	364kw	364kw	372kw

材料和规格可随时改变，恕不另行通知。  
Materials and specifications in the catalogue are subject to change at anytime without notice.

## 移动立轴冲击式破碎站 MOBILE VERTICAL SHAFT IMPACT CRUSHERS



**用途：**制砂或骨料整形  
**Application:** Sand making and aggregate shaping.

**适用于：**所有砂石骨料  
**Applicable to:** All natural stones.

### 技术特点 TECHNICAL CHARACTERISTICS

- 配备“石打石”和“石打铁”破碎腔型和瀑布进料斗，通过量更大，适应性更强；  
"stone crushing with stone" mode and "stone crushing on iron" mode Crushing chamber and waterfall hopper, Greater throughput, More adaptable.
- 全新深腔型转子，配置流线型上下耐磨衬板，产品粒型更优；  
The new deep cavity rotor is equipped with streamlined upper and lower wear-resisting liner, and the product has better grain shape.
- 破碎机液压驱动，转速随时可以调整，产品级配更合理；  
The hydraulic drive of the crusher can be adjusted at any time, and the granule shape of the product is more reasonable.
- 破碎机顶盖液压开启、V带液压张紧，维修更方便；  
The top cover of the crusher is hydraulically opened, narrow V with hydraulic tension, and maintenance is more convenient.
- 无线遥控，一键启停，智能故障诊断，实时监控、存储运行状态，用户操作更方便；  
Wireless remote control, one-button start-stop, intelligent fault diagnosis, real-time monitoring and storage of running state, user operation is more convenient.
- 智能连续性给料系统，破碎主机负载检测，物料流动更顺畅，生产更连续；  
Intelligent continuous feeding system, broken machine load detection, material flow more smoothly, more continuous production.
- 低压喷雾除尘、振动部件减振专业性设计，整机更环保。  
Low pressure spray dedusting, vibration parts damping professional design, the whole machine is more environmentally friendly.

移动立轴冲击式破碎站 MOBILE VERTICAL SHAFT IMPACT CRUSHERS

产品型号 Product model	XPL1000
最大喂料尺寸 Maximum feeding dimension	57mm
转子直径 Maximum feeding dimension	930mm
处理能力 Processing capacity	250t/h
整机重量 Machine weight	29t
发动机品牌 Engine brand	康明斯CUMMINS/斯堪尼亚 SCANIA
发动机功率 Engine power	364-371 kw

材料和规格可随时改变，恕不另行通知。  
Materials and specifications in the catalogue are subject to change at anytime without notice.



## 移动式筛分站 MOBILE SCREENING PLANTS



**用途:** 用于筛分破碎后的物料  
**Application:** Sieving crushed materials.

**适用于:** 所有砂石骨料、再生骨料  
**Applicable to:** All natural stones and scrap construction materials.

## 技术特点 TECHNICAL CHARACTERISTICS

- 配置大面积筛分机，辅以筛分角度可调式设计，筛分效率更高，适应性更强；  
It is equipped with large area screening machine with adjustable sieving angle. It has higher sieving efficiency and stronger adaptability.
- 整机采用多泵多阀液压驱动，动力更强劲，油耗更低；  
The machine adopts multi pump and multi valve hydraulic drive, with stronger power and lower fuel consumption.
- 无线遥控，一键启停，智能故障诊断，实时监控、存储运行状态，用户操作更方便；  
Wireless remote control, one-button start-stop, intelligent fault diagnosis, real-time monitoring and storage of running state, user operation is more convenient.
- 基于防抛、磨、滴、漏设计理念的物料流动设计，生产更连续；  
Based on the design concept of anti-throwing, grinding, dropping and leakage, material flow design is more continuous.
- 折叠式输送机，结合更大离地间隙，转场、运输更方便；  
Folding hopper, foldable conveyor, with larger clearance from the ground, more convenient for transit and transportation.
- 快速的楔形张紧装置，方便的检修孔，配置自动润滑站，维护保养更方便。  
Fast wedge tension device, convenient maintenance hole, automatic lubricating station, convenient maintenance.

### 移动式筛分站 Mobile Screens Plants

产品型号 Product model	XFY1548	XFY1561	XFT1860
最大喂料尺寸 Maximum feeding dimension	400mm	150mm	200mm
筛箱尺寸 (宽×长) Screen box dimension (W×L)	1550×4880mm	1550×6100mm	1830×6100mm
处理能力 Processing capacity	400 t/h	500 t/h	800 t/h
整机重量 Machine weight	34t	35t	46t
发动机品牌 Engine brand	康明斯CUMMINS/斯堪尼亚 SCANIA		
发动机功率 Engine power	97kw	97kw	151kw

材料和规格可随时改变，恕不另行通知。  
Materials and specifications in the catalogue are subject to change at anytime without notice.

## 模块化破碎筛分系统 MODULAR CRUSHING SCREENING SYSTEM



模块化破碎筛分系统提供灵活的、可快速投产的破碎筛分解决方案，可满足不同客户的需求，尤其适合露天矿山破碎。标准化、模块化的产品安装快速、简洁，降低基建、安装成本，便于迅速投入运营，快速实现投资收益。

Modular crushing and screening system provides a flexible and rapid commissioning of crushing and screening solutions to meet the needs of different customers, especially suitable for open-pit mine crushing. The standardized and modular product installation is fast and concise, reduces the cost of infrastructure installation, facilitates the rapid operation and realizes the investment income.

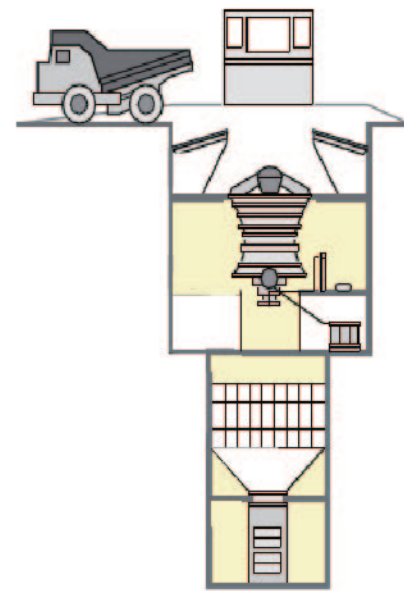
### 主要参数 MAIN PARAMETERS

应用领域 Application area	通过量 (t/h) Through quantity (t/h)	最大给料粒度 (mm) Maximum feed diameter (mm)	破碎段 Broken section	关键配置 Key configuration
低—微腐蚀性物料 Low and slightly corrosive materials	500	630	2	颚式+反击式 Jaw and impact crusher
	800	750	2	
	1000	1000	3	
	1500	1300	3	
	2000	1500	3	
中—高腐蚀性物料 Medium and high corrosive materials	500	750	3	颚式+圆锥式 Jaw and cone crusher
	800	1000	3	
	1000	1000	3	
	1500	1300	3	旋回式+圆锥式 Gyratory and cone crusher
	2000	1500	3	
3000	1500	3		

材料和规格可随时改变，恕不另行通知。  
Materials and specifications in the catalogue are subject to change at anytime without notice.



## 旋回式破碎机 GYRATORY CRUSHER



徐工PX系列旋回破碎机，具备超重负荷连续作业的高可靠性，完全满足高效粗碎作业的各种要求。拥有更大的倾角破碎腔和较长的破碎面，能够实现连续破碎，效率高、能耗低；采用多项智能控制和保护系统，大大降低了维修工作量和运行成本。

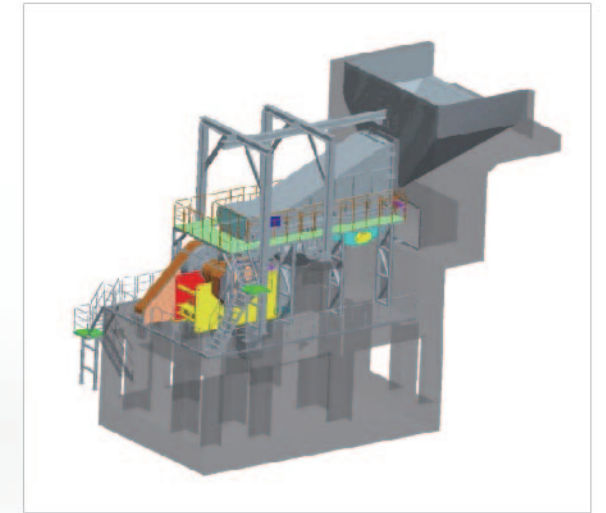
XCMG PX series rotary crusher has the high reliability of continuous operation under overload, and fully meets the various requirements of efficient crushing operation. With a larger inclined crushing chamber and a longer crushing surface, it can achieve continuous crushing with high efficiency and low energy consumption. Adopting a number of intelligent control and protection systems, the maintenance workload and operation cost are greatly reduced.

主要参数 MAIN PARAMETERS

型号 Model	重量 Weight (t)	给料口尺寸 Size of feedport (mm)	电机功率 Motor power (kw)	排料口尺寸 Size of discharge port (mm)	生产能力 Throughput (t/h)
PX4265	119.8	1065	375	140~175	2010~2870
PX5065	153.5	1270	375	150~175	2395~2935
PX5475	242.2	1370	450	150~200	2885~3485
PX6275	298.5	1575	450	150~200	2890~4330
PX6089	398.3	1525	600	165~230	4195~5805

材料和规格可随时改变，恕不另行通知。  
Materials and specifications in the catalogue are subject to change at anytime without notice.

## 颞式破碎机 JAW CRUSHER



徐工PE系列颞式破碎机，采用创新的模块化、无焊接结构设计，因而具有极大的耐疲劳性能及高可靠性；安装简单快捷、方式多样；破碎比大、能耗低；配合使用高性能铸钢机架及耐磨性极高的耐磨件，使其可广泛应用于矿山、冶金、建材、公路等行业的破碎作业。

XCMG PE series jaw crusher adopts innovative modular and weldless structure design, so it has great fatigue resistance and high reliability. The installation is simple and quick, with various methods, large crushing ratio and low energy consumption. It can be widely used in crushing operations in mining, metallurgy, building materials, highway and other industries because of its high performance cast steel frame and wear-resistant parts.

主要参数 MAIN PARAMETERS

型号 Model	重量 Weight (t)	给料口尺寸 Size of feedport (mm)	电机功率 Motor power (kw)	排料口尺寸 Size of discharge port (mm)	生产能力 Throughput (t/h)
PE0810	17	700 × 1060	110	70~200	173~760
PE0912	29.5	870 × 1200	160	70~175	205~787
PE1013	44	1000 × 1300	160	100~250	316~1267
PE1214	61.5	1200 × 1400	200	125~250	420~1319
PE1216	88.5	1200 × 1600	250	150~300	599~1909
PE1520	137	1200 × 2000	400	175~300	917~2462

材料和规格可随时改变，恕不另行通知。  
Materials and specifications in the catalogue are subject to change at anytime without notice.



## 反击式破碎机 IMPACT CRUSHER



徐工PF系列反击式破碎机采用重型化转子、超高耐磨材料及优化的破碎腔结构，这种优化组合极大提高了破碎产能及产品质量，降低了生产成本和维护时间，广泛应用于粗碎、中碎、细碎及建筑垃圾破碎回收等领域，为客户创造更多的价值。

XCMG PE series impact crusher adopts heavy-duty rotor, super-high wear-resistant material and optimized crushing chamber structure. This optimized combination greatly improves crushing capacity and product quality, reduces production cost and maintenance time, and is widely used in crushing, medium crushing, fine crushing and construction waste crushing and recycling fields to create more value for customers.

主要参数 MAIN PARAMETERS

型号 Model	重量 Weight (t)	给料口尺寸 Size of feedport (mm)	电机功率 Motor power (kw)	排料口尺寸 Size of discharge port (mm)	生产能力 Throughput (t/h)
PF1214	11.7	1320×560	250~315	350	180~280
PF1315	16.2	1540×600	315~355	400	225~350
PF1415	22.3	1540×1320	250~315	1000	365~560
PF1520	26.8	2040×700	500~630	400	360~560
PF1620	41.2	2040×1634	400~500	1300	570~930
PF2023	80.6	2310×1986	1000~1200	1500	1160~1970

材料和规格可随时改变，恕不另行通知。  
Materials and specifications in the catalogue are subject to change at anytime without notice.

## 圆锥式破碎机 CONE CRUSHER



徐工PY系列多缸液压圆锥破碎机将破碎转速、冲程、破碎功率进行优化组合，从而使通过能力大大提高。液压调整装置及徐工智能控制系统使得破碎机能够在恒定的排料口下进行生产，极大提高了生产过程及产品质量的稳定性。

XCMG PY series multi-cylinder hydraulic cone crusher optimizes the combination of crushing speed, stroke and crushing power, thus greatly improving the throughput. Hydraulic adjusting device and XCMG intelligent control system make crusher can be produced under constant discharge port, greatly improving the stability of production process and product quality.

主要参数 MAIN PARAMETERS

型号 Model	重量 Weight (t)	给料口尺寸 Size of feedport (mm)	电机功率 Motor power (kw)	排料口尺寸 Size of discharge port (mm)	生产能力 Throughput (t/h)
PY1100	18	241	220	10~45	115~440
PY1300	25.5	304	315	10~51	140~630
PY1500	37	351	355	10~51	175~790
PY1100D	19.3	450	250	25~54	195~601
PY1300D	36.5	560	315	38~83	318~1050
PY1700D	67	350	520	10~70	202~1283
PY1900D	97	428	750	13~70	275~1837
PY2100M	120.5	384	550	6~32	495~1935
PY2300M	153	414	750	8~38	615~2420

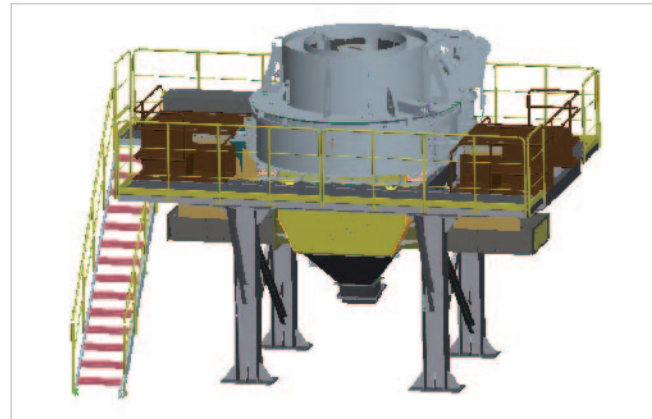
材料和规格可随时改变，恕不另行通知。  
Materials and specifications in the catalogue are subject to change at anytime without notice.



## 立轴冲击式破碎机 VERTICAL SHAFT IMPACT CRUSHER

徐工PL系列立轴冲击式破碎机将独特的转子设计、超高耐磨材料及优化的破碎腔结构相结合,极大提高了生产能力和产品质量,同时大大降低了生产成本和磨损件的消耗。

XCMG PL series vertical shaft impact crusher combines unique rotor design, ultra-high wear-resistant material and optimized crushing chamber structure, greatly improving production capacity and product quality, while greatly reducing production costs and wear parts consumption.



主要参数 MAIN PARAMETERS

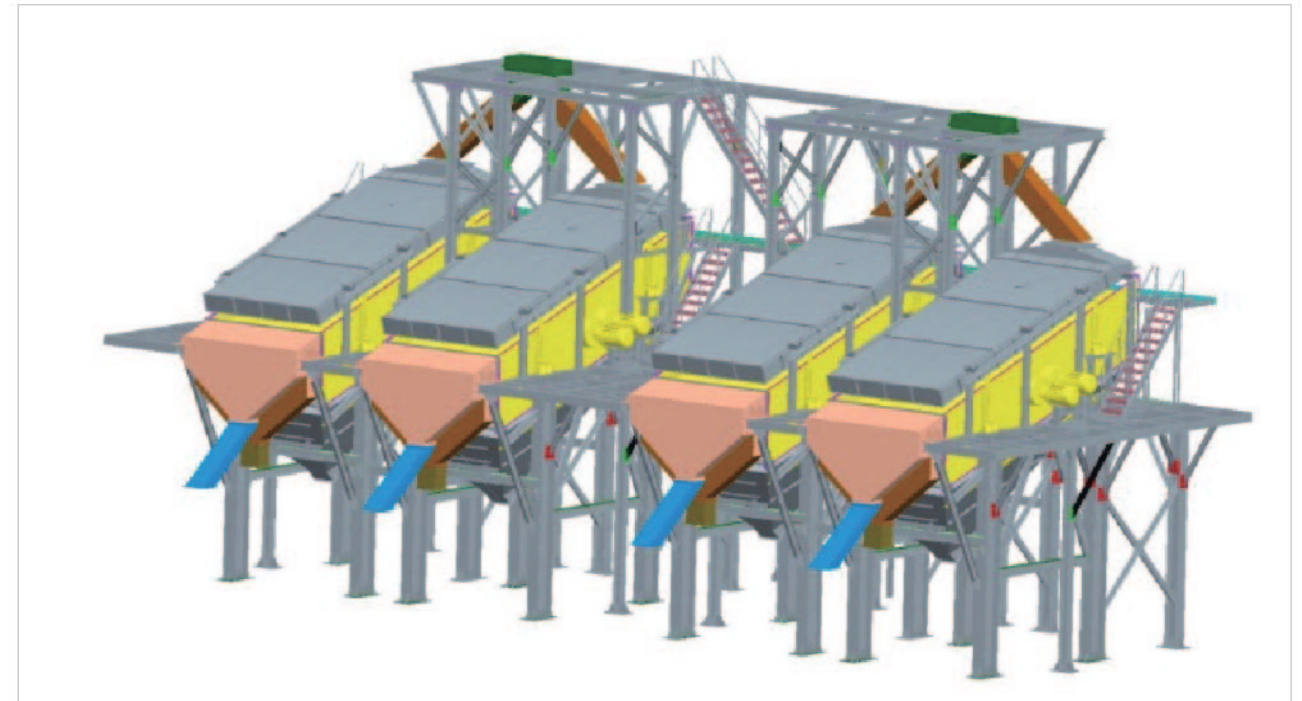
型号 Model	重量 Weight (t)	给料口尺寸 Size of feedport (mm)	电机功率 Motor power (kw)	生产能力 Throughput (t/h)
PL1000	12.5	45	160~320	150~450
PL1200	14.5	50	320~600	230~590

材料和规格可随时改变,恕不另行通知。  
Materials and specifications in the catalogue are subject to change at anytime without notice.

## 筛分机 SCREENING MACHINE

徐工FY、FT系列筛分机采用拉铆钉技术,筛分倾角可调式设计,振幅和转速参数设置范围广泛,具有很高的筛分效率,可广泛应用于各种骨料、采矿的物料筛分。

XCMG FY, FT series screening machine adopts pull rivet technology, screen inclination adjustable design, amplitude and rotational speed parameters set a wide range, with high screening efficiency, can be widely used in various aggregates, mining materials screening.



主要参数 MAIN PARAMETERS

型号 Model	重量 Weight (t)	筛分面积 Sieving area (mm)	层数 Number of layers	电机功率 Motor power (kw)
FY1860	10.5~14	11.4	2、3、4	30~44
FY2570	16~22.5	18.2	2、3	44~88
FY3070	21~23	22.5	2、3	88~120
FT1860	10.4	11.4	2、3	30~44
FT2460	13.5	15.1	2、3	44~60
FT2470	17.5	17.8	2、3	44~60

材料和规格可随时改变,恕不另行通知。  
Materials and specifications in the catalogue are subject to change at anytime without notice.



## 施工案例 CONSTRUCTION CASE

西藏铜矿



陕西煤矿



内蒙金矿



## 施工案例 CONSTRUCTION CASE

澳大利亚铁矿



云南锌铜矿



广东砂石料

