



欢迎访问徐工商城
省心更省钱一站式



欢迎关注徐工施维英机械官方微信
1.查找号码“XCMG-SCHWING”添加好友
2.查找公众号“徐工施维英”添加好友
3.直接扫描上方二维码添加好友



混凝土拖泵

TRAILER-MOUNTED CONCRETE PUMP



 **徐州徐工施维英机械有限公司**
Xuzhou XCMG SCHWING Machinery Co., Ltd.

地址 (ADD) :中国江苏省徐州市金山桥经济开发区桃山路29号 邮编 (ADD) :221001
No.29 Taoshan Road, Economic development zone of jinshanqiao, xuzhou, Jiangsu Province, China
销售电话 (Add) :86 0516-66881879 备件电话 (Service Tel) :86 0516-87892510 服务电话 (Service Tel) :86 400-110-9999
服务质量投诉电话 (Quality SupervisionTel) :86 400-110-9999 统一客户热线 (Unified service hotline) :86 400-110-9999

本印刷品所包含的图片及数据，随着产品的不断升级而改变，请以实际产品为准。
Pictures and data in this catalog change with the upgrade and modification of products, so please take the actual vehicle as reference.

 **徐州徐工施维英机械有限公司**
Xuzhou XCMG SCHWING Machinery Co., Ltd.

德国技术

GERMAN TECHNOLOGY

专业、极致，源自德国施维英的顶级技术

Specialty and acme originates from the top-level technology of SCHWING Germany

中国制造

MADE IN CHINA

落地德国制造高标准，实现产品的高可靠、超耐用

By implementing the high standard of German-made realizes highly reliable and durable products.

卓越品质

EXCELLENT QUALITY

用心设计，细节彰显尊重，品质赢得未来

Carefully designed, details demonstrates respect and quality wins the future.



技术全面升级

COMPREHENSIVELY UPGRADED TECHNOLOGY

V7系列混凝土拖泵

XCMG V7 SERIES TRAILER-MOUNTED CONCRETE PUMP



更高效的裙阀泵送技术

More efficient rock valve pumping technology

更稳定的换向缓冲技术

Steadier reversing buffering technology

更可靠的全液压换向技术

More reliable fully-hydraulic reversing technology

超低压损的液压系统技术

Ultra-low pressure loss hydraulic system technology

更尖端的节能控制技术

More sophisticated energy-saving control technology

更安全智能的电气控制技术

Safer and smarter electrical control system

更精细的人性化设计

More elaborate user-friendly design

DURABLE

ADVANCED



NO.1

MORE EFFICIENT ROCK VALVE PUMPING TECHNOLOGY

更高效的裙阀泵送系统

国际专利的裙阀技术

INTERNATIONALLY
PATENTED ROCK
VALVE TECHNOLOGY



- 基于激光引导的同轴装配，活塞头运行轨迹更精确，阻力更小，效率更高。
- Based on laser guide, coaxial assembly makes piston head's moving track more precise, with smaller resistance and higher efficiency.

易泵送;
Easy pumping;

轴端寿命更长;
Longer service life of shaft-end;

流道更平缓, 阻力更小, 油耗更低;
Gentler passageway, smaller resistance and lower oil consumption;

搅拌更充分, 吸收效率更高;
More uniform agitation and higher absorption efficiency;

单边磨损, 使用寿命更长;
One-side wear prolongs service life;

敞口式结构, 易于修复, 使用成本更低。
Open-mouth structure is easy for repair, lowering use cost.



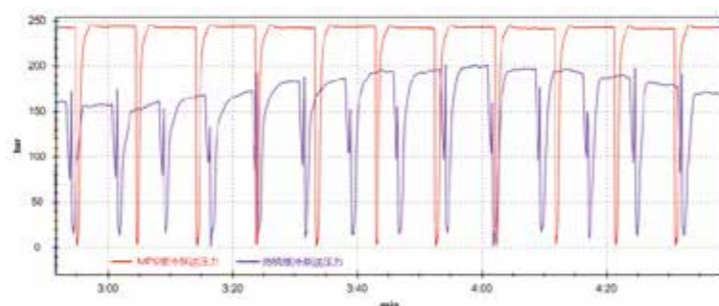
NO.2

STEADIER REVERSING BUFFERING TECHNOLOGY

更稳定的换向缓冲技术

MPS (微冲击) 换向缓冲技术;
MPS (MICRO SHOCK) REVERSING BUFFERING TECHNOLOGY;

- 响应更快的阀控缓冲技术取代传统主泵减排技术;
- The valve control buffering technology with faster response replaces traditional pump emission reduction technology;
- 缓冲过程更稳定、更可靠、冲击更小;
- The buffering process is steadier and more reliable, with smaller impact;
- 换向时间缩短到0.1S以内, 效率提升6%以上。
- The reversing time is shortened to be less than 0.1s and the efficiency is improved by more than 6%.

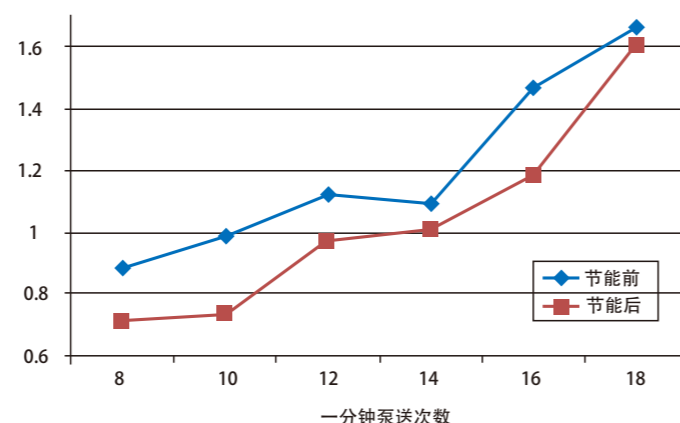


NO.4

ULTRA-LOW PRESSURE LOSS HYDRAULIC SYSTEM TECHNOLOGY

超低压损的液压系统

- 超低压损液压系统配合高效裙阀泵送系统, 结合基于节油的功率匹配控制系统, 面对不同混凝土都可以使泵送系统充分吸收发动机功率, 不浪费每一滴燃油, 平均油耗低至0.362L/m³。
- Ultra-low pressure loss hydraulic system, coordinated with efficient rock valve pumping system and power matching control system for oil-saving can help pumping system fully absorb engine power regardless of different concrete, without wasting a dip of fuel, and the average oil consumption is as low as 0.362L/m³.

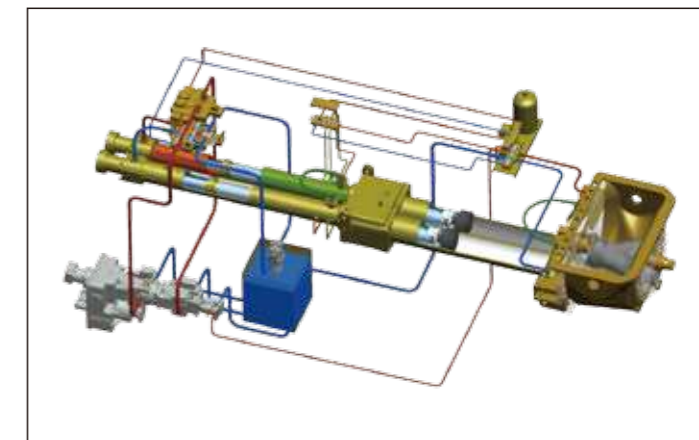


NO.3

MORE RELIABLE FULLY-HYDRAULIC REVERSING TECHNOLOGY

更可靠的全液压换向技术

- 德国施维英液压技术精髓, 真正实现全液压换向, 换向过程实现全液压闭环自适应控制, 无需任何电气元件参与, 更高效、更稳定、零污染。
- SCHWING Germany's hydraulic technology quintessence truly realizes fully-hydraulic reversing, in which self-adaption control in fully-hydraulic closed-loop is realized, with no need for any electrical components, more effective, steadier and zero-pollution.

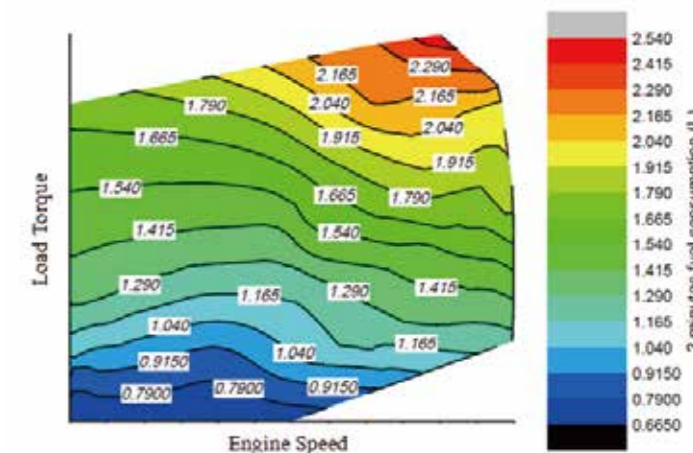


NO.5

MORE SOPHISTICATED ENERGY-SAVING CONTROL TECHNOLOGY

更尖端的节能控制技术

- 新一代全工况节能控制技术, 采用精准节能动力匹配控制技术, 动力系统进一步节能7%。
- A new generation of energy-saving control technology for all working conditions adopts accurate energy-saving power matching control technology, further improving the power system by 7%.



NO.6

MORE AND SMATER ELECTRICAL CONTROL 更安全智能的电气控制技术

智能诊断技术

INTELLIGENT DIAGNOSIS TECHNOLOGY

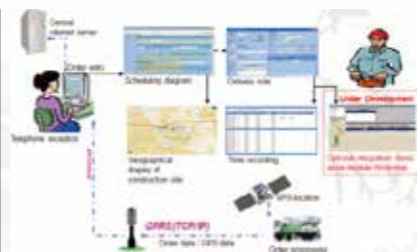
- 实时监控、存储设备运行状态，可实现生产再现，及时提醒设备运维保养；
- It can monitor and store equipment's running state in real time, realize production reappearance and timely remind the equipment of operation and maintenance;
- 可以精确定位200多种故障，节省故障排除时间；
- It can accurately locate over 200 kinds of faults, thus saving troubleshooting time;
- 可通过远程专家会诊平台，实现技术专家在线服务，快速处理复杂故障。
- By the remote consultation platform, it can realize online service by technicians and rapidly handle complicated faults.



保养提示
Maintenance prompt



故障诊断
Fault diagnosis



远程专家会诊
Remote consultation platform

智能润滑系统控制技术

INTELLIGENT LUBRICATION SYSTEM CONTROL TECHNOLOGY

- 智能程序控制，为泵送系统提供精确润滑方案；
- Intelligent program control provides accurate lubrication scheme for pumping system;
- 带润滑点堵塞监测，实时故障报警，规避次生损失。
- It provides lubricating point blockage monitoring, which can realize real-time warning of faults and avoid secondary loss.

NO.7

MORE ELABORATE USER-FRIENDLY DESIGN 更精细的人性化设计

更实用的配置选择
More practical configuration option

更便捷的维修保养
Easier repair and maintenance

更安全的设计理念
Safer design concept

更专业的技术细节
More professional technical details

更舒适的使用体验
More comfortable use experience



活塞自动退回技术
PISTON'S AUTOMATIC
RETURN TECHNOLOGY



易拆装链式卡环
CHAIN-TYPE SNAP RING EASY
FOR ASSEMBLY AND DISASSEMBLY

- 耐磨环自动补偿
AUTOMATIC COMPENSATION OF WEAR RING
- 液压系统防吸空保护
HYDRAULIC SYSTEM'S AIR SUCTION PROTECTION
- 液压油自动冷却技术
AUTOMATIC COOLING TECHNOLOGY OF HYDRAULIC OIL
- 自动反搅功能保护
AUTOMATIC REVERSE AGITATING PROTECTION
- 发动机低温冷启保护
LOW-TEMPERATURE COLD STARTUP PROTECTION OF ENGINE
- 发动机机油压力保护
ENGINE OIL PRESSURE PROTECTION
- 发动机水温保护
WATER TEMPERATURE PROTECTION OF ENGINE
- 主泵过载保护
PUMP OVERLOAD PROTECTION



V7系列混凝土拖泵 XCMG V7 SERIES TRAILER-MOUNTED CONCRETE PUMP



拖式混凝土泵 Trailer-mounted concrete pump

类别 CATEGORY	项目 ITEM	单位 UNIT	HBT5008V	HBT6013V	HBT9018V	HBT10020V	
整车参数 Overall parameter	外形尺寸	Outline dimension	mm	5623×1884×2606	6115×2100×2810	6482×2100×2886	6482×2100×2886
	整机质量	Overall weight	kg	5035	6900	7400	7450
动力系统 Power system	型号	Model		WP4G110E220	WP4G160E331	BF6M1013	BF6M1013
	额定功率	Rated power	kW/r/min	82/2200	118/2200	186/2100	186/2100
	额定扭矩	Rated torque	Nm/r/min	430/1400~1600	570/1400~1600	1000/1600	1000/1600
	尾气排放标准	Emission standard		国II China II	国III China III	国III China III	国III China III
泵送系统 Pumping system	理论输送量 (低压/高压)	Theoretical output(low/high pressure)	m ³ /h	50	65/40	115/60	100/55
	理论泵送压力 (低压/高压)	Theoretical pumping pressure(low/high pressure)	MPa	8	8/13	9/18	11 / 20
	输送缸内径×行程	Delivery cylinder diameter × stroke	mm	φ180×1400	φ200×1400	φ230×1600	φ230×1600
	上料高度	Filling height	mm	1320	1400	1400	1370
其他 Others	配料方式	Transfer tube		裙阀 Rock valve			
	润滑方式	Lubrication type		自动润滑 Automatic lubrication			

施工案例 Construction cases



HBT6013V 江苏徐州
HBT6013V trailer-mounted concrete pump
in Xuzhou, Jiangsu



HBT9018V 马来西亚
HBT9018V trailer-mounted concrete pump
in Malaysia



HBT6013V 印尼
HBT6013V trailer-mounted concrete pump
in Indonesia



HBT9018V 江苏南京
HBT9018V trailer-mounted concrete pump
in Nanjing, Jiangsu



HBT8016V 江苏徐州
HBT8016V trailer-mounted concrete pump
in Xuzhou, Jiangsu



HBT9018V 巴基斯坦
HBT9018V trailer-mounted concrete pump
in Pakistan